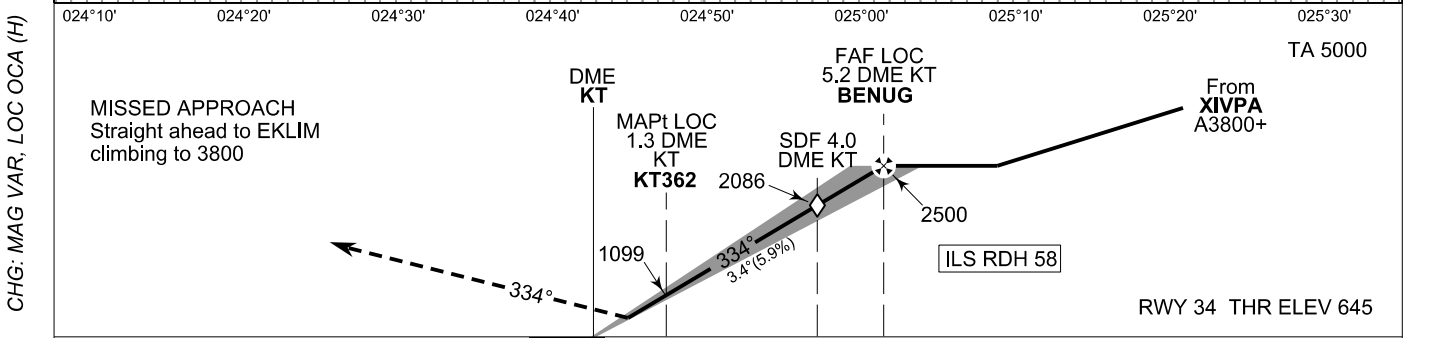
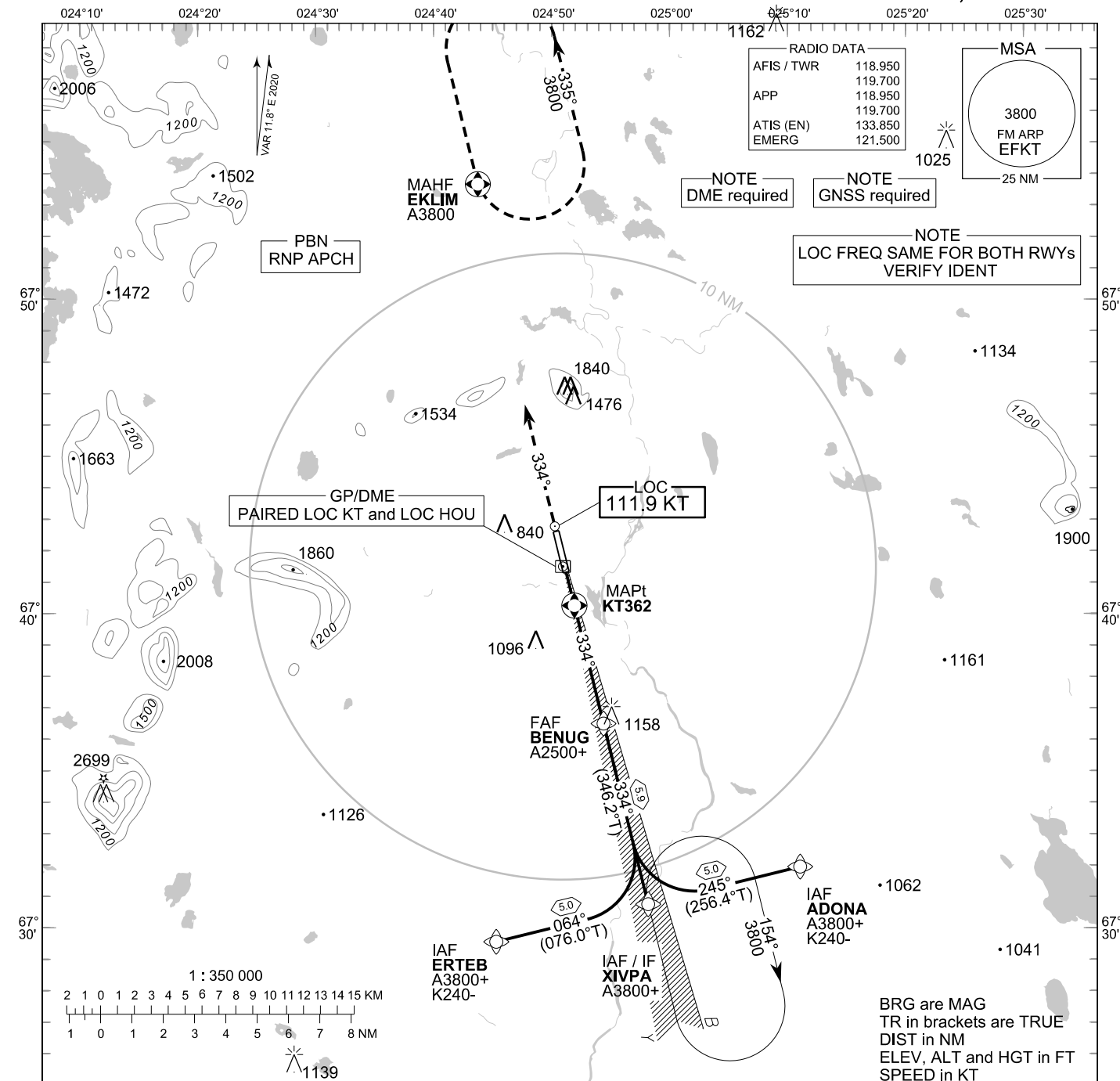


**INSTRUMENT
APPROACH CHART - ICAO**

ELEV 645 FT
HEIGHTS RELATED TO
THR RWY 34 ELEV 645 FT

**ILS Z or LOC Z RWY 34
KITILÄ AERODROME
KITILÄ, FINLAND**



NM	OCA (H)				kt				
	A	B	C	D	90	100	120	140	160
ILS CAT I	844 (200)	858 (214)	875 (231)	895 (251)	2:35	2:20	1:57	1:40	1:27
LOC	1140 (490)				Timing not authorized for defining the MAPt				
LOC WO SDF 4.0 KT	2090 (1440)								
Circling	1140 (500)	1400 (750)	1870 (1230)	2240 (1590)					

EFKT ILS Z or LOC Z RWY 34										
PROC ID NAV SPEC	SEQ NR	P/T	WPT			MAG	GEO TR	DIST NM	Constraints	
			ID	Type	Flyover				LVL	Speed
I34 ERTEB RNP APCH	005	IF	ERTEB	IAF	-	064°	076.0°T	5.0	A3800+	K240-
	010	TF	XIVPA	IF	-				A3800+	
	020	TF	BENUG	FAF LOC	-	334°	346.2°T	5.9	A2500+	
	030	TF	KT362	MAPt LOC	Y	334°	345.8°T	-		
	040	CA	-	-	-				A1200+	
	050	DF	EKLIM	MAHF	Y	-	-	-	A3800	

EFKT ILS Z or LOC Z RWY 34										
PROC ID NAV SPEC	SEQ NR	P/T	WPT			MAG	GEO TR	DIST NM	Constraints	
			ID	Type	Flyover				LVL	Speed
I34 XIVPA RNP APCH	010	IF	XIVPA	IAF/IF	-	334°	346.2°T	5.9	A3800+	
	020	TF	BENUG	FAF LOC	-				A2500+	
	030	TF	KT362	MAPt LOC	Y	334°	345.8°T	-		
	040	CA	-	-	-				A1200+	
	050	DF	EKLIM	MAHF	Y	-	-	-	A3800	

EFKT ILS Z or LOC Z RWY 34										
PROC ID NAV SPEC	SEQ NR	P/T	WPT			MAG	GEO TR	DIST NM	Constraints	
			ID	Type	Flyover				LVL	Speed
I34 ADONA RNP APCH	005	IF	ADONA	IAF	-	245°	256.4°T	5.0	A3800+	K240-
	010	TF	XIVPA	IF	-				A3800+	
	020	TF	BENUG	FAF LOC	-	334°	346.2°T	5.9	A2500+	
	030	TF	KT362	MAPt LOC	Y	334°	345.8°T	-		
	040	CA	-	-	-				A1200+	
	050	DF	EKLIM	MAHF	Y	-	-	-	A3800	

RNAV Holdings							
ID	INBD TR	INBD MAG	Turn Direction	Speed	MNM HLDG LVL	TIME	DIST NM
XIVPA	346.1°T	334°	Right	K230-	A3800	1 MIN	-
EKLIM	167.3°T	155°	Left	K230-	A3800	1 MIN	-

WPT COORD
SEE PAGE EFKT AD 2.15 - 1

FINAL APPROACH PARAMETERS			
LOC Gradient	ILS		RDH
	CAT	GPA	
5.94 % (3.40°)	I	3.40°	58 FT