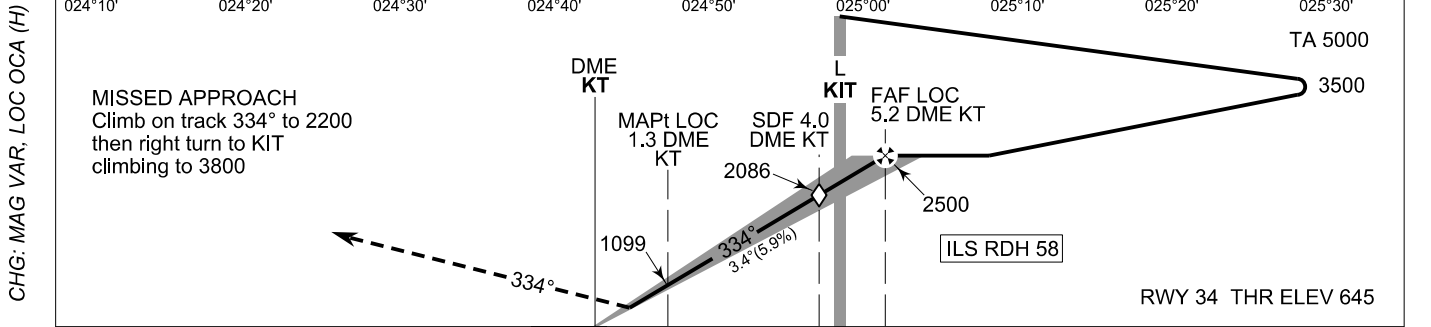
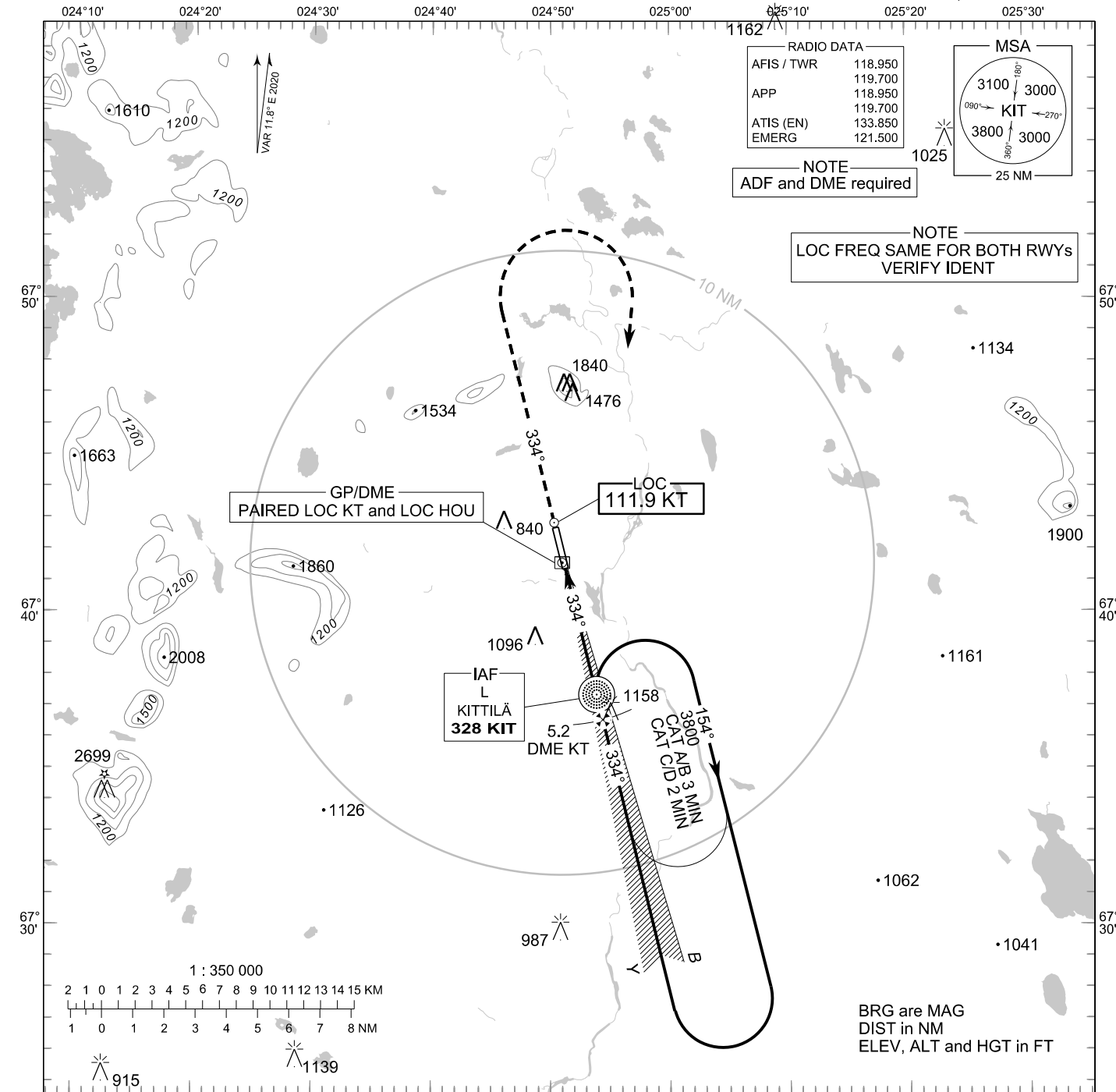


**INSTRUMENT  
APPROACH CHART - ICAO**

ELEV 645 FT  
HEIGHTS RELATED TO  
THR RWY 34 ELEV 645 FT

**ILS Y or LOC Y RWY 34  
KITILÄ AERODROME  
KITILÄ, FINLAND**



NM	5	0	5	10	NM
OCA (H)	A	B	C	D	
ILS CAT I	844 (200)	858 (214)	875 (231)	895 (251)	
LOC	1140 (490)				
LOC WO SDF 4.0 KT	2090 (1440)				
Circling	1140 (500)	1400 (750)	1870 (1230)	2240 (1590)	

	kt	90	100	120	140	160
FAF - MAPt 3.9 NM	min:sec	2:35	2:20	1:57	1:40	1:27
Rate of descent	ft/min	540	600	720	840	960

Timing not authorized for defining the MAPt