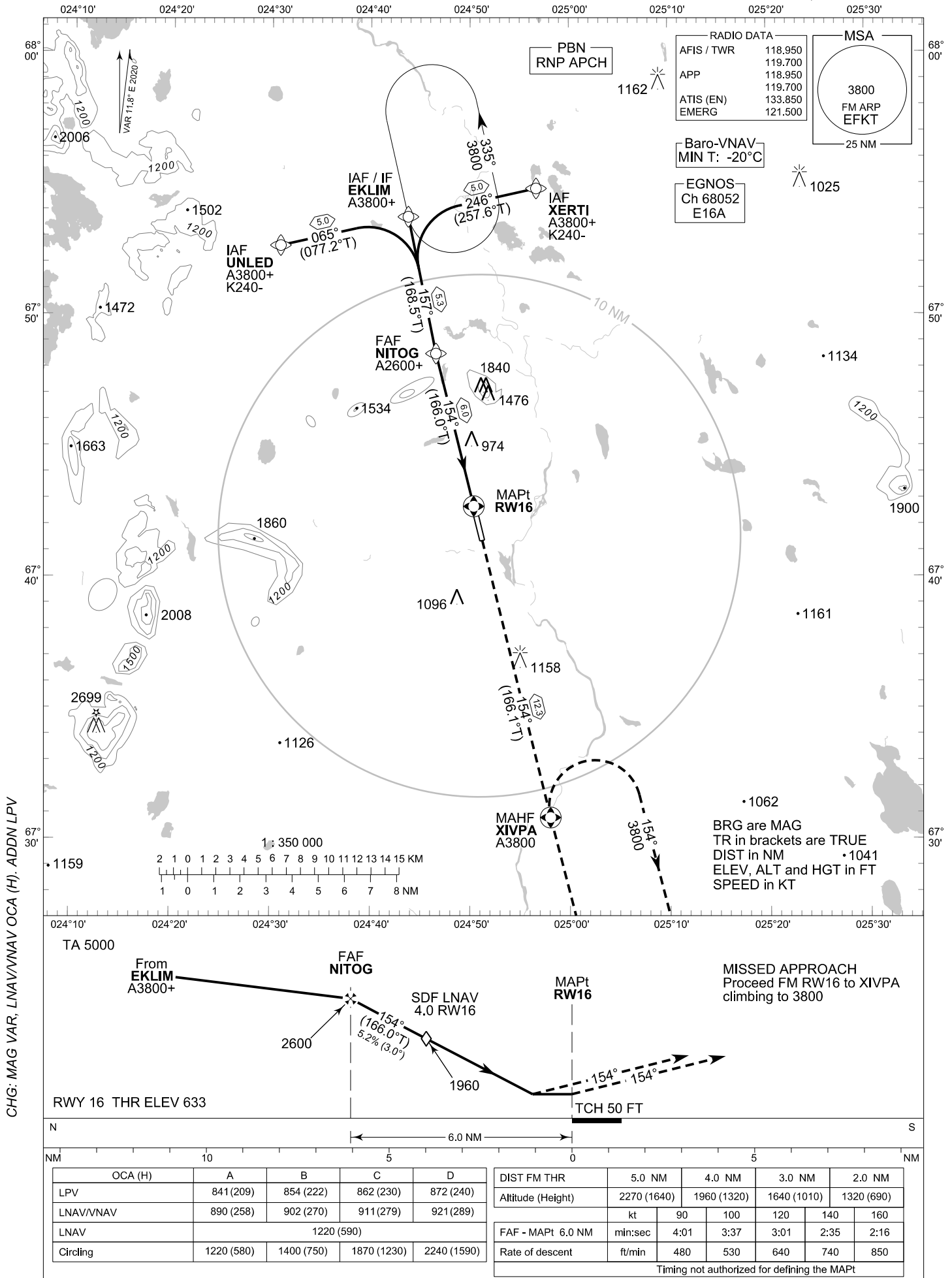


**INSTRUMENT
APPROACH CHART - ICAO**

ELEV 645 FT
HEIGHTS RELATED TO
THR RWY 16 ELEV 633 FT

**RNP RWY 16
KITILÄ AERODROME
KITILÄ, FINLAND**



EFKT RNP RWY 16										
PROC ID NAV SPEC	SEQ NR	P/T	WPT			MAG	GEO TR	DIST NM	Constraints	
			ID	Type	Flyover				LVL	Speed
H16 XERTI RNP APCH	005	IF	XERTI	IAF	-				A3800+	K240-
	010	TF	EKLIM	IF	-	246°	257.6°T	5.0	A3800+	
	020	TF	NITOG	FAF	-	157°	168.5°T	5.3	A2600+	
	030	TF	RW16	MAPt	Y	154°	166.0°T	6.0		
	040	TF	XIVPA	MAHF	Y	154°	166.1°T	12.3	A3800	

EFKT RNP RWY 16										
PROC ID NAV SPEC	SEQ NR	P/T	WPT			MAG	GEO TR	DIST NM	Constraints	
			ID	Type	Flyover				LVL	Speed
H16 EKLIM RNP APCH	010	IF	EKLIM	IAF/IF	-				A3800+	
	020	TF	NITOG	FAF	-	157°	168.5°T	5.3	A2600+	
	030	TF	RW16	MAPt	Y	154°	166.0°T	6.0		
	040	TF	XIVPA	MAHF	Y	154°	166.1°T	12.3	A3800	

EFKT RNP RWY 16										
PROC ID NAV SPEC	SEQ NR	P/T	WPT			MAG	GEO TR	DIST NM	Constraints	
			ID	Type	Flyover				LVL	Speed
H16 UNLED RNP APCH	005	IF	UNLED	IAF	-				A3800+	K240-
	010	TF	EKLIM	IF	-	065°	077.2°T	5.0	A3800+	
	020	TF	NITOG	FAF	-	157°	168.5°T	5.3	A2600+	
	030	TF	RW16	MAPt	Y	154°	166.0°T	6.0		
	040	TF	XIVPA	MAHF	Y	154°	166.1°T	12.3	A3800	

RNAV Holdings							
ID	INBD TR	INBD MAG	Turn Direction	Speed	MNM HLDG LVL	TIME	DIST NM
EKLIM	167.3°T	155°	Left	K230-	A3800	1 MIN	-
XIVPA	346.1°T	334°	Right	K230-	A3800	1 MIN	-

WPT COORD
SEE PAGE EFKT AD 2.15 - 1

FINAL APPROACH PARAMETERS			
LNAV Gradient	Baro-VNAV		TCH
	VPA	MNM T	
5.24 % (3.00°)	3.00°	-20°C	50 FT

SBAS DATA	
Approach ID	E16A
Service Provider	EGNOS
CRC remainder	07 B4 A7 CD
Channel number	68052
Data Block	SEE EFKT AD 2.15 - 9