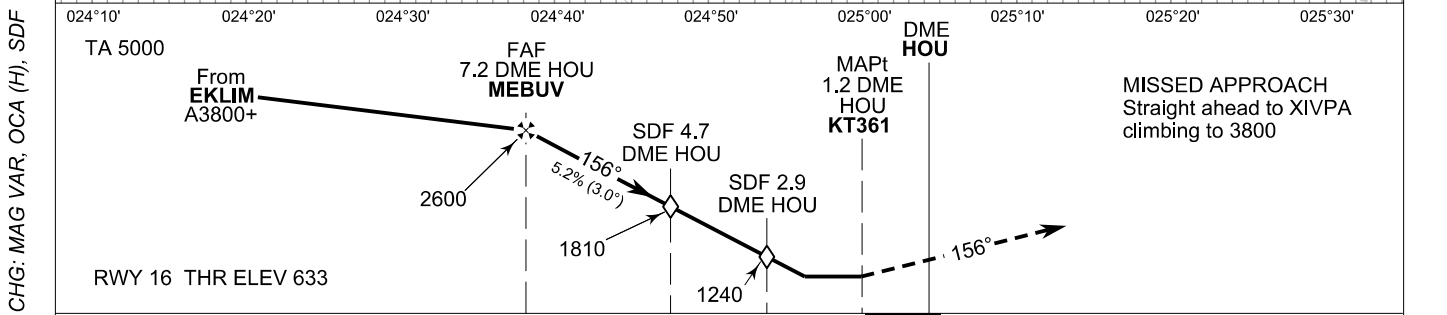
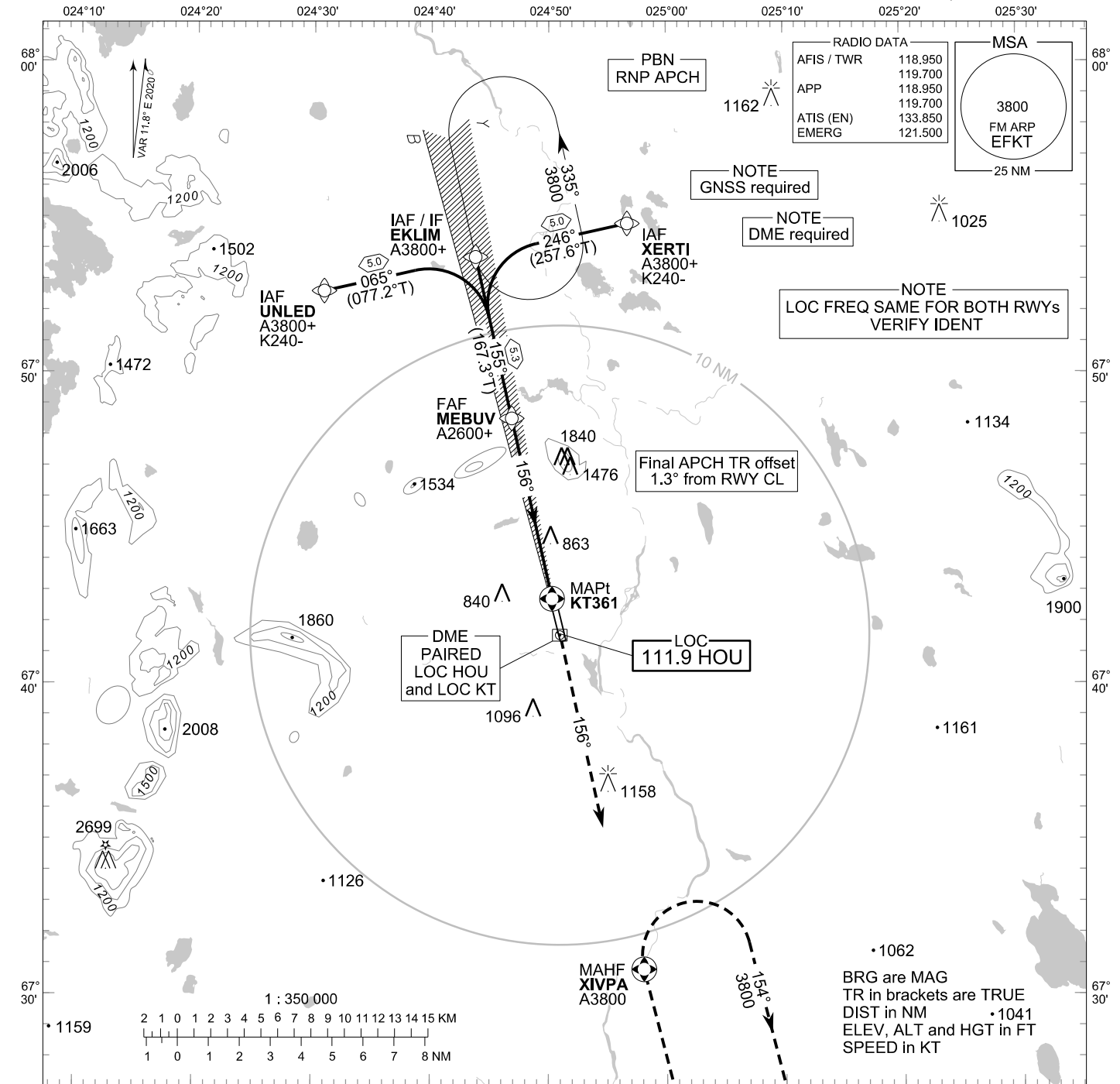


**INSTRUMENT  
APPROACH CHART - ICAO**

ELEV 645 FT  
HEIGHTS RELATED TO  
THR RWY 16 ELEV 633 FT

**LOC Z RWY 16  
KITILÄ AERODROME  
KITILÄ, FINLAND**



NM	OCA (H)				Final Approach DIST					
	A	B	C	D	7.0 DME	6.0 DME	5.0 DME	4.0 DME	3.0 DME	
LOC	1110 (480)				2550 (1910)	2230 (1600)	1910 (1280)	1590 (960)	1270 (640)	
LOC WO SDF 2.9	1240 (610)				kt	90	100	120	140	160
LOC WO SDF 4.7	1810 (1180)				min:sec	4:00	3:36	3:00	2:34	2:15
Circling	1140 (500)	1400 (750)	1870 (1230)	2240 (1590)	ft/min	480	530	640	740	850
Circling WO SDF 4.7	1810 (1170)	1810 (1170)	1870 (1230)	2240 (1590)	Timing not authorized for defining the MAPt					

EFKT LOC Z RWY 16										
PROC ID NAV SPEC	SEQ NR	P/T	WPT			MAG	GEO TR	DIST NM	Constraints	
			ID	Type	Flyover				LVL	Speed
L16 XERTI RNP APCH	005	IF	XERTI	IAF	-	246°	257.6°T	5.0	A3800+	K240-
	010	TF	EKLIM	IF	-				A3800+	
	020	TF	MEBUV	FAF	-	155°	167.3°T	5.3	A2600+	
	030	TF	KT361	MAPt	Y	156°	167.8°T	-	A1800+	
	040	CA	-	-	-					
	050	DF	XIVPA	MAHF	Y	-	-	-	A3800	

EFKT LOC Z RWY 16										
PROC ID NAV SPEC	SEQ NR	P/T	WPT			MAG	GEO TR	DIST NM	Constraints	
			ID	Type	Flyover				LVL	Speed
L16 EKLIM RNP APCH	010	IF	EKLIM	IAF/IF	-	155°	167.3°T	5.3	A3800+	
	020	TF	MEBUV	FAF	-				A2600+	
	030	TF	KT361	MAPt	Y	156°	167.8°T	-	A1800+	
	040	CA	-	-	-					
	050	DF	XIVPA	MAHF	Y	-	-	-	A3800	

EFKT LOC Z RWY 16										
PROC ID NAV SPEC	SEQ NR	P/T	WPT			MAG	GEO TR	DIST NM	Constraints	
			ID	Type	Flyover				LVL	Speed
L16 UNLED RNP APCH	005	IF	UNLED	IAF	-	065°	077.2°T	5.0	A3800+	K240-
	010	TF	EKLIM	IF	-				A3800+	
	020	TF	MEBUV	FAF	-	155°	167.3°T	5.3	A2600+	
	030	TF	KT361	MAPt	Y	156°	167.8°T	-	A1800+	
	040	CA	-	-	-					
	050	DF	XIVPA	MAHF	Y	-	-	-	A3800	

RNAV Holdings							
ID	INBD TR	INBD MAG	Turn Direction	Speed	MNM HLDG LVL	TIME	DIST NM
EKLIM	167.3°T	155°	Left	K230-	A3800	1 MIN	-
XIVPA	346.1°T	334°	Right	K230-	A3800	1 MIN	-

WPT COORD
SEE PAGE EFKT AD 2.15 - 1

FINAL APPROACH PARAMETERS			
LOC Gradient	ILS		TCH
	CAT	GPA	
5.24 % (3.00°)	-	-	50 FT