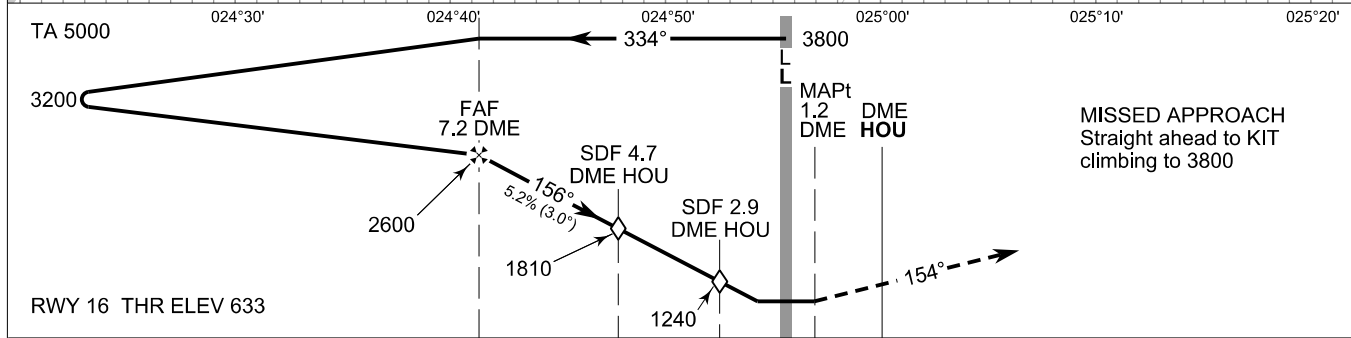
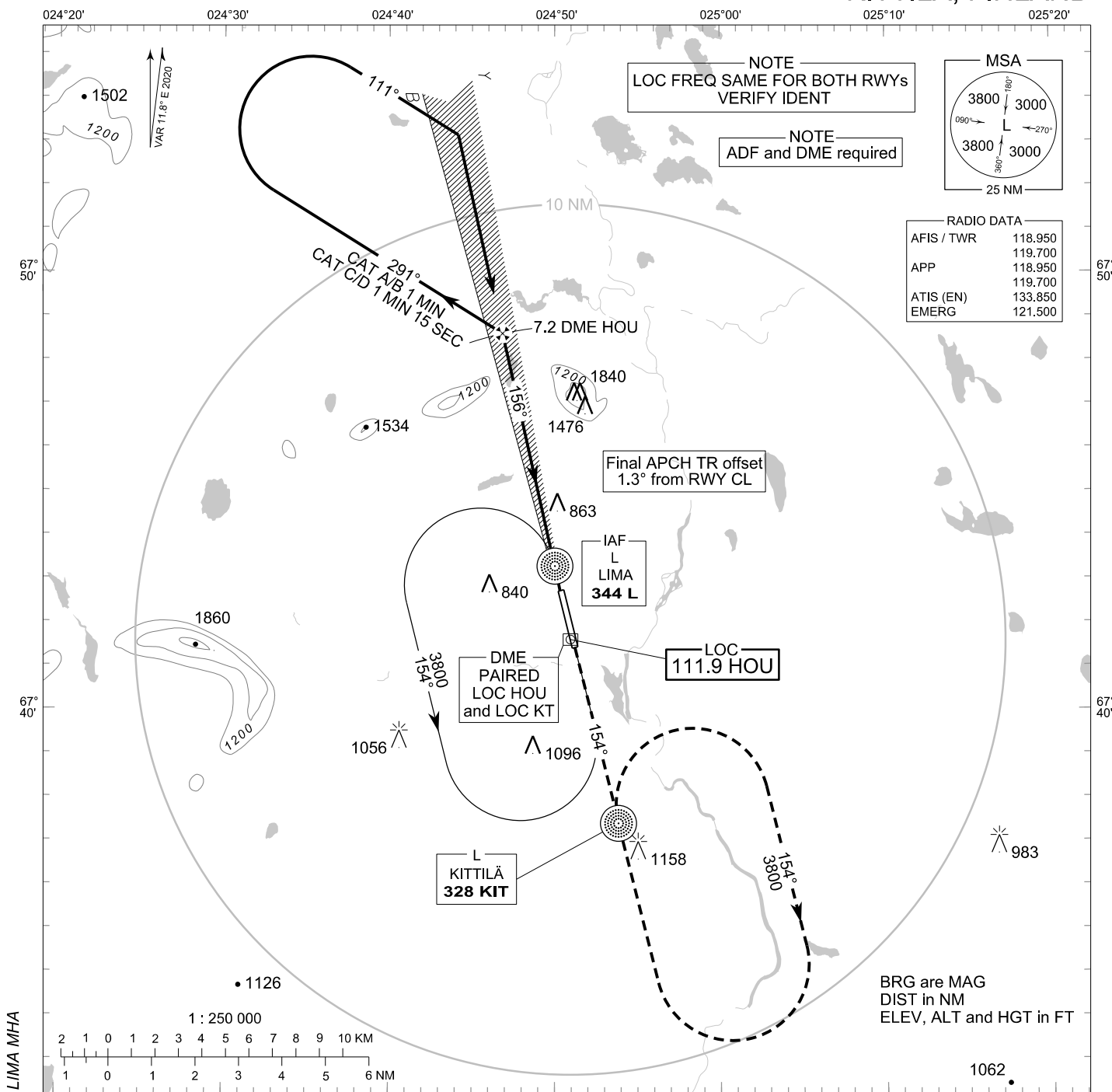


**INSTRUMENT  
APPROACH CHART - ICAO**

ELEV 645 FT  
HEIGHTS RELATED TO  
THR RWY 16 ELEV 633 FT

**LOC Y RWY 16  
KITILÄ AERODROME  
KITILÄ, FINLAND**



OCA (H)	A	B	C	D
LOC		1110 (480)		
LOC WO SDF 2.9		1240 (610)		
LOC WO SDF 4.7		1810 (1180)		
Circling	1140 (500)	1400 (750)	1870 (1230)	2240 (1590)
Circling WO SDF 4.7	1810 (1170)	1810 (1170)	1870 (1230)	2240 (1590)

Final Approach DIST	7.0 DME	6.0 DME	5.0 DME	4.0 DME	3.0 DME	
Altitude (Height)	2550 (1910)	2230 (1600)	1910 (1280)	1590 (960)	1270 (640)	
	kt	90	100	120	140	160
FAF - MAPt 6.0 NM	min:sec	4:00	3:36	3:00	2:34	2:15
Rate of descent	ft/min	480	530	640	740	850

Timing not authorized for defining the MAPt