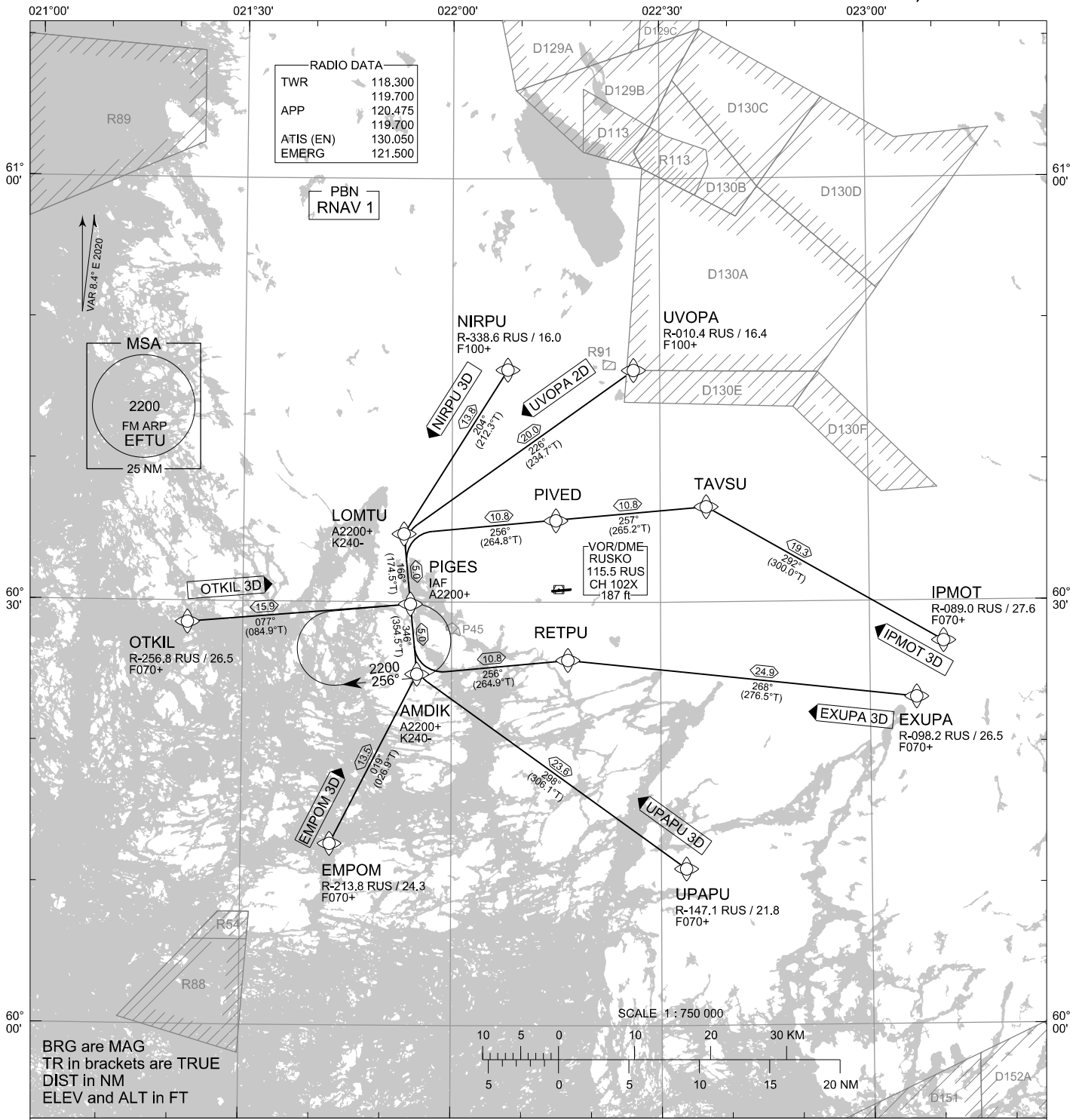


TRANSITION ALT
5000



CHG: MAG VAR, PBN

RNAV STAR RWY 08

EMPOM 3D EXUPA 3D IPMOT 3D NIRPU 3D OTKIL 3D UPAPU 3D UVOPA 2D

DME/DME OPS:	NOT SUPPORTED	RCF:	SELECT TRANSPONDER CODE 7600
ROUTES:	RNAV PROC CODING ON THE VERSO OF THE CHART ATC WILL GIVE DESCENT CLEARANCES		RNAV STAR HAS BEEN GIVEN AND ACKNOWLEDGED: FOLLOW THE STAR TO THE RESPECTIVE RWY AND EXECUTE IAP AND LAND
WPT CONSTRAINTS:	ALT / FL / SPEED CONSTRAINTS MUST ALWAYS BE FOLLOWED AS PUBLISHED UNLESS EXPLICITLY CANCELLED BY ATC		DURING RADAR VECTORED BEFORE IAF: IN ACCORDANCE WITH THE RULES OF THE AIR
CD OPS:	BY ATC CLR IF TFC PERMITS. PLAN CD PATH ACCORDING TO STAR	AREA MNM ALT:	SEE AMA INDEX, AIP ENR 6.1 - 3
NOISE ABATEMENT:	AVOID OVERFLYING THE CITY OF TURKU BELOW 2000		

EFTU RNAV STAR RWY 08										
RTE NAV SPEC	SEQ NR	P/T	WPT		MAG	GEO TR	DIST NM	Turn Direction	Constraints	
			ID	Flyover					LVL	Speed
EMPOM 3D RNAV 1	010	IF	EMPOM	-	-	-	-		F070+	
	020	TF	AMDIK	-	019°	026.9°T	13.5	L	A2200+	K240-
	030	TF	PIGES	-	346°	354.5°T	5.0		A2200+	

EXUPA 3D RNAV 1	010	IF	EXUPA	-	-	-	-		F070+	
	020	TF	RETPU	-	268°	276.5°T	24.9			
	030	TF	AMDIK	-	256°	264.9°T	10.8	R	A2200+	K240-
	040	TF	PIGES	-	346°	354.5°T	5.0		A2200+	

IPMOT 3D RNAV 1	010	IF	IPMOT	-	-	-	-		F070+	
	020	TF	TAVSU	-	292°	300.0°T	19.3	L		
	030	TF	PIVED	-	257°	265.2°T	10.8			
	040	TF	LOMTU	-	256°	264.8°T	10.8	L	A2200+	K240-
	050	TF	PIGES	-	166°	174.5°T	5.0		A2200+	

NIRPU 3D RNAV 1	010	IF	NIRPU	-	-	-	-		F100+	
	020	TF	LOMTU	-	204°	212.3°T	13.8	L	A2200+	K240-
	030	TF	PIGES	-	166°	174.5°T	5.0		A2200+	

OTKIL 3D RNAV 1	010	IF	OTKIL	-	-	-	-		F070+	
	020	TF	PIGES	-	077°	084.9°T	15.9		A2200+	

UPAPU 3D RNAV 1	010	IF	UPAPU	-	-	-	-		F070+	
	020	TF	AMDIK	-	298°	306.1°T	23.6	R	A2200+	K240-
	030	TF	PIGES	-	346°	354.5°T	5.0		A2200+	

UVOPA 2D RNAV 1	010	IF	UVOPA	-	-	-	-		F100+	
	020	TF	LOMTU	-	226°	234.7°T	20.0	L	A2200+	K240-
	030	TF	PIGES	-	166°	174.5°T	5.0		A2200+	

RNAV Holdings							
ID	INBD TR	INBD MAG	Turn Direction	MAX IAS	MNM HLDG LVL	TIME	DIST NM
PIGES	084.8°T	076°	Right	230 KT	A2200	1 MIN	-

WPT COORD
SEE PAGE EFTU AD 2.15 - 1