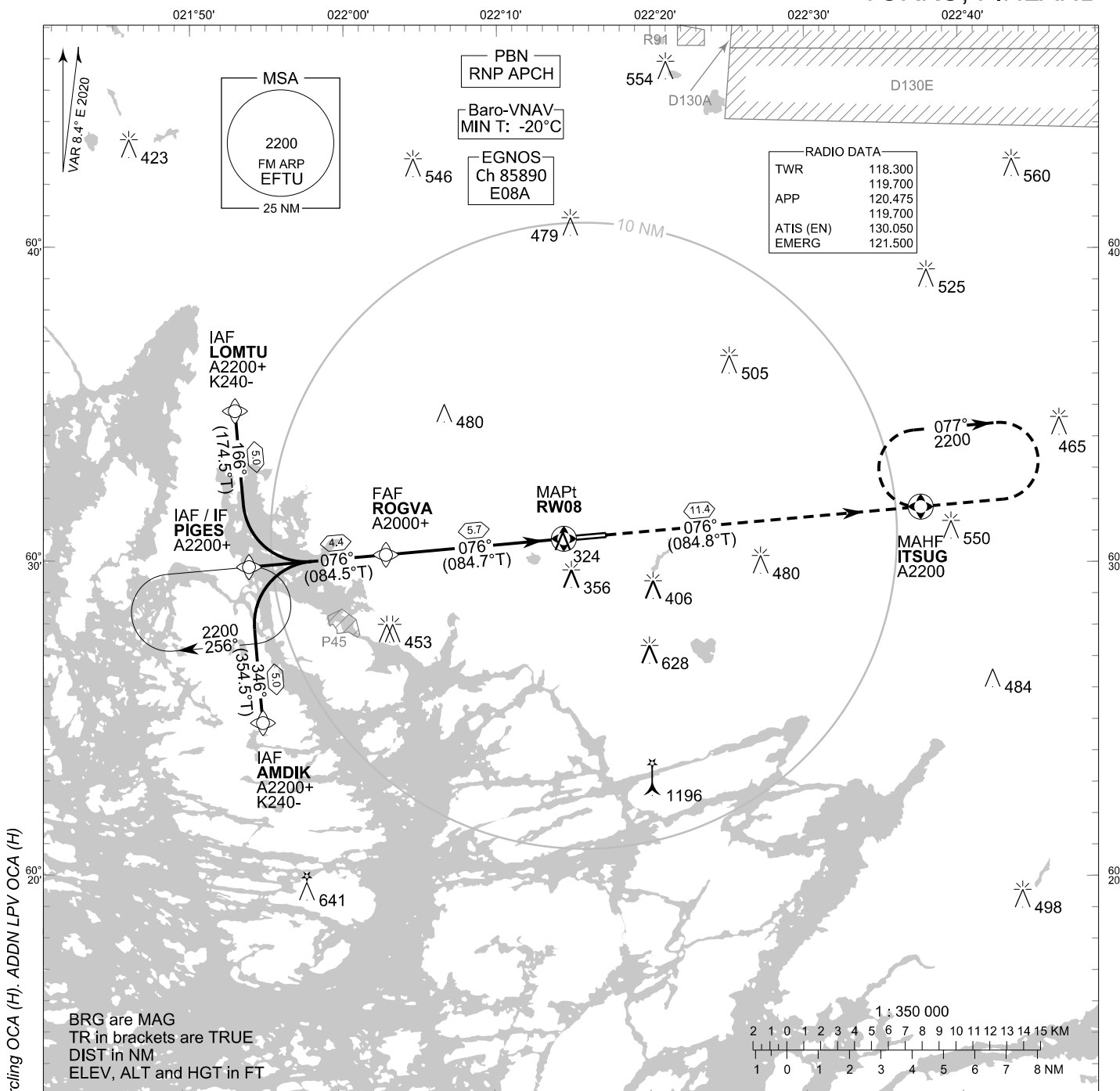


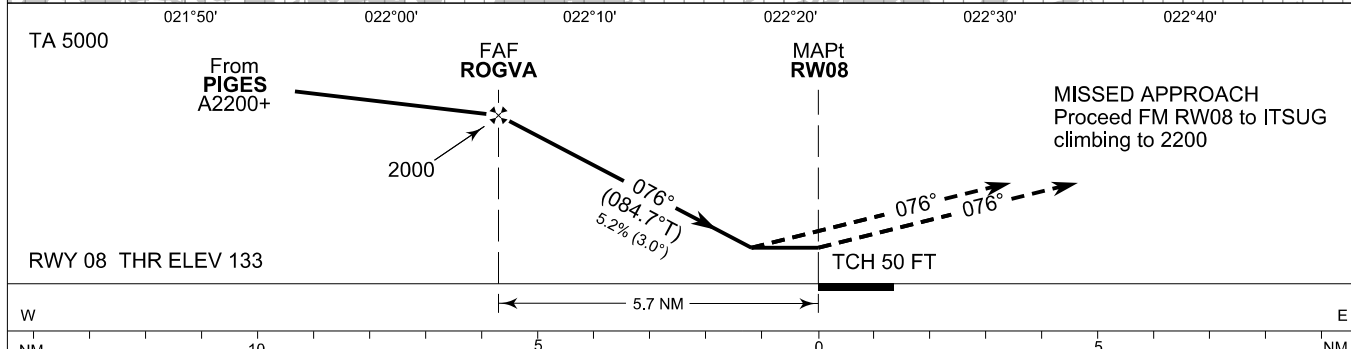
**INSTRUMENT  
APPROACH CHART - ICAO**

ELEV 162 FT  
HEIGHTS RELATED TO  
THR RWY 08 ELEV 133 FT

**RNP RWY 08  
TURKU AERODROME  
TURKU, FINLAND**



CHG: MAG VAR, LNAV/VNAV, Circling OCA (H), ADDN LPV OCA (H)



OCA (H)	A	B	C	D
LPV	388 (256)	400 (268)	408 (276)	419 (287)
LNAV/VNAV	440 (308)	452 (320)	460 (328)	470 (338)
LNAV	580 (440)			
Circling	660 (490)	710 (540)	800 (640)	1030 (860)

NOTE: CIRCLING NORTH OF AD ONLY

DIST FM THR	5.0 NM	4.0 NM	3.0 NM	2.0 NM		
Altitude (Height)	1770 (1640)	1460 (1320)	1140 (1010)	820 (690)		
FAF - MAPt 5.7 NM	kt	90	100	120	140	160
	min:sec	3:48	3:26	2:51	2:27	2:08
Rate of descent	ft/min	480	530	640	740	850

Timing not authorized for defining the MAPt

EFTU RNP RWY 08										
PROC ID NAV SPEC	SEQ NR	P/T	WPT			MAG GEO TR	DIST NM	Turn Direction	Constraints	
			ID	Type	Flyover				LVL	Speed
H08 LOMTU RNP APCH	005	IF	LOMTU	IAF	-	166°	5.0	L	A2200+	K240-
	010	TF	PIGES	IF	-	174.5°T			A2200+	
	020	TF	ROGVA	FAF	-	076°	4.4		A2000+	
	030	TF	RW08	MAPt	Y	084.5°T	5.7			
	040	TF	ITSUG	MAHF	Y	076°	11.4		A2200	

EFTU RNP RWY 08										
PROC ID NAV SPEC	SEQ NR	P/T	WPT			MAG GEO TR	DIST NM	Turn Direction	Constraints	
			ID	Type	Flyover				LVL	Speed
H08 PIGES RNP APCH	010	IF	PIGES	IAF/IF	-	076°	4.4		A2200+	
	020	TF	ROGVA	FAF	-	084.5°T			A2000+	
	030	TF	RW08	MAPt	Y	076°	5.7			
	040	TF	ITSUG	MAHF	Y	084.7°T	11.4		A2200	

EFTU RNP RWY 08										
PROC ID NAV SPEC	SEQ NR	P/T	WPT			MAG GEO TR	DIST NM	Turn Direction	Constraints	
			ID	Type	Flyover				LVL	Speed
H08 AMDIK RNP APCH	005	IF	AMDIK	IAF	-	346°	5.0	R	A2200+	K240-
	010	TF	PIGES	IF	-	354.5°T			A2200+	
	020	TF	ROGVA	FAF	-	076°	4.4		A2000+	
	030	TF	RW08	MAPt	Y	084.5°T	5.7			
	040	TF	ITSUG	MAHF	Y	076°	11.4		A2200	

RNAV Holdings							
ID	INBD TR	INBD MAG	Turn Direction	MAX IAS	MNM HLDG LVL	TIME	DIST NM
PIGES	084.8°T	076°	Right	230 KT	A2200	1 MIN	-
ITSUG	264.9°T	257°	Right	230 KT	A2200	1 MIN	-

WPT COORD
SEE PAGE EFTU AD 2.15 - 1

FINAL APPROACH PARAMETERS			
LNAV Gradient	Baro-VNAV		TCH
	VPA	MNM T	
5.24 % (3.00°)	3.00°	-20°C	50 FT

SBAS DATA	
Approach ID	E08A
Service Provider	EGNOS
CRC remainder	EF 45 ED 09
Channel number	85890
Data Block	SEE EFTU AD 2.15 - 9