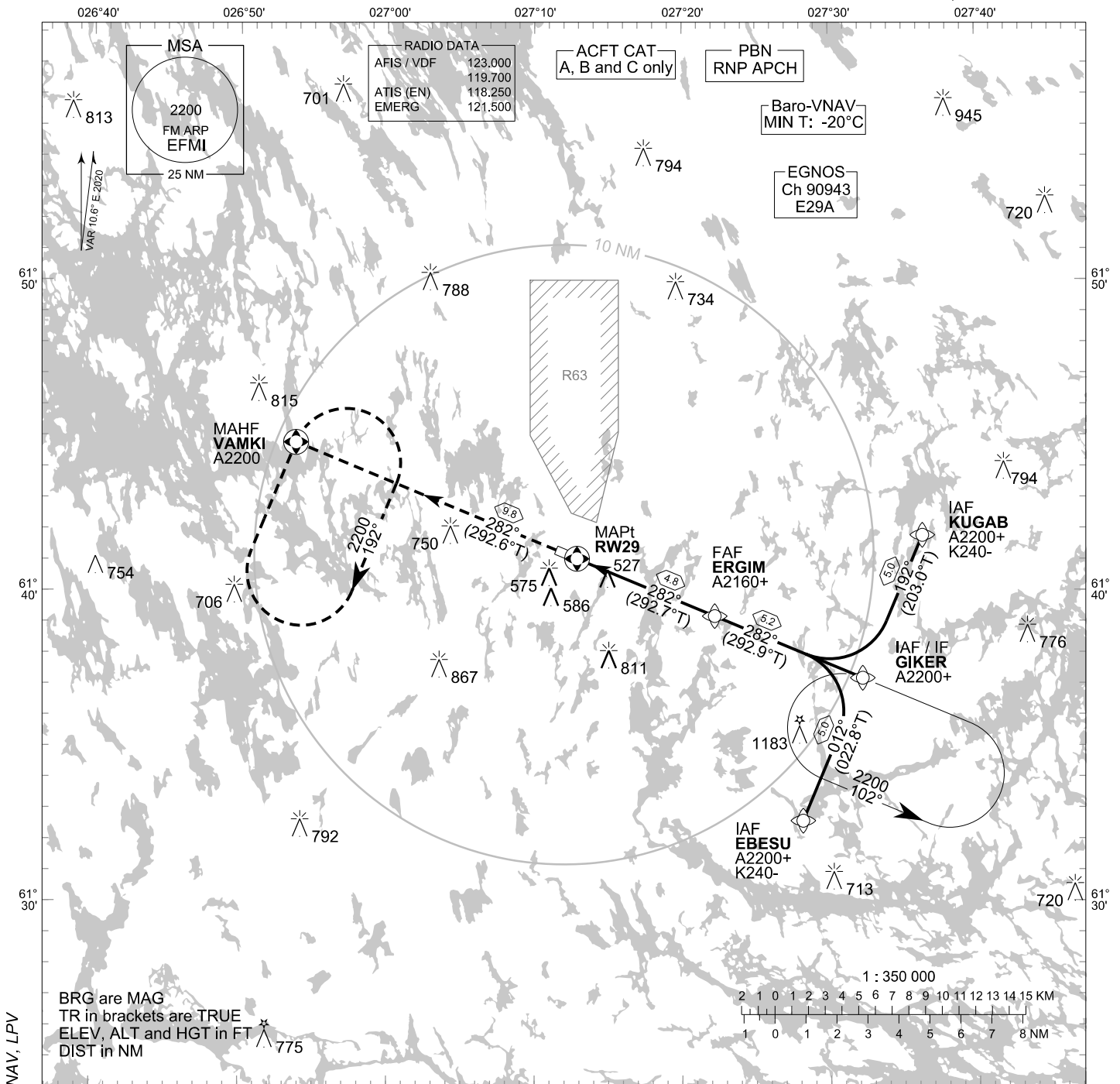


**INSTRUMENT  
APPROACH CHART - ICAO**

ELEV 330 FT  
HEIGHTS RELATED TO  
DTHR RWY 29 ELEV 316 FT

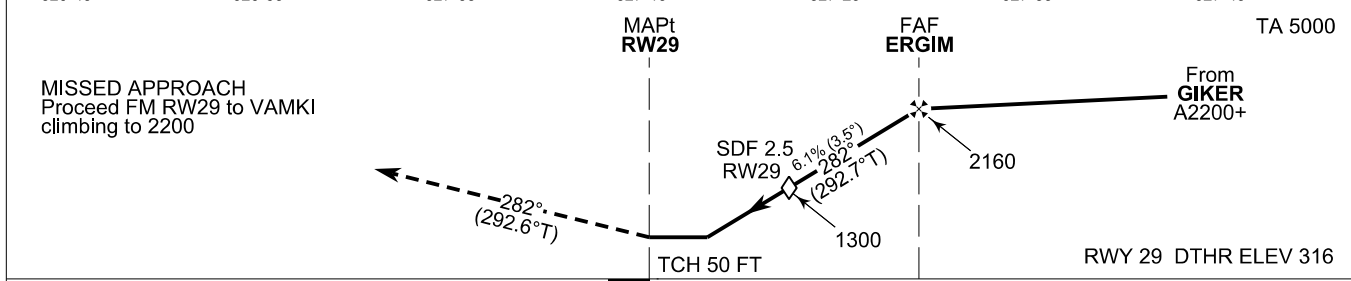
RNP RWY 29  
MIKKELI AERODROME  
MIKKELI, FINLAND



BRG are MAG  
TR in brackets are TRUE  
ELEV, ALT and HGT in FT  
DIST in NM



CHG: MAG VAR. ADDN LNAV/VNAV, LPV



W E

OCA (H)	A	B	C
LPV	598 (282)	614 (298)	625 (309)
LNAV/VNAV	711 (395)	726 (410)	738 (422)
LNAV	780 (460)		
Circling	880 (550)	890 (560)	1210 (880)

DIST FM THR	2.0 NM		3.0 NM		4.0 NM	
Altitude (Height)	1110 (790)		1480 (1160)		1850 (1540)	
	kt	90	100	120	140	160
FAF - MAPt 4.8 NM	min:sec	3:13	2:53	2:25	2:04	1:48
	ft/min	560	620	740	870	990

NOTE: CIRCLING SOUTH OF AD ONLY

Timing not authorized for defining the MAPt

EFMI RNP RWY 29										
PROC ID NAV SPEC	SEQ NR	P/T	WPT			MAG GEO TR	DIST NM	Turn Direction	Constraints	
			ID	Type	Flyover				LVL	Speed
H29 EBESU RNP APCH	005	IF	EBESU	IAF	-	012°	5.0	L	A2200+	K240-
	010	TF	GIKER	IF	-	022.8°T 282°			A2200+	
	020	TF	ERGIM	FAF	-	292.9°T 282°	5.2	A2160+		
	030	TF	RW29	MAPt	Y	292.7°T 282°	4.8			
	040	TF	VAMKI	MAHF	Y	292.6°T	9.8		A2200	

EFMI RNP RWY 29										
PROC ID NAV SPEC	SEQ NR	P/T	WPT			MAG GEO TR	DIST NM	Turn Direction	Constraints	
			ID	Type	Flyover				LVL	Speed
H29 GIKER RNP APCH	010	IF	GIKER	IAF/IF	-	282°	5.2		A2200+	
	020	TF	ERGIM	FAF	-	292.9°T 282°			A2160+	
	030	TF	RW29	MAPt	Y	292.7°T 282°	4.8			
	040	TF	VAMKI	MAHF	Y	292.6°T	9.8		A2200	

EFMI RNP RWY 29										
PROC ID NAV SPEC	SEQ NR	P/T	WPT			MAG GEO TR	DIST NM	Turn Direction	Constraints	
			ID	Type	Flyover				LVL	Speed
H29 KUGAB RNP APCH	005	IF	KUGAB	IAF	-	192°	5.0	R	A2200+	K240-
	010	TF	GIKER	IF	-	203.0°T 282°			A2200+	
	020	TF	ERGIM	FAF	-	292.9°T 282°	5.2	A2160+		
	030	TF	RW29	MAPt	Y	292.7°T 282°	4.8			
	040	TF	VAMKI	MAHF	Y	292.6°T	9.8		A2200	

RNAV Holdings							
ID	INBD TR	INBD MAG	Turn Direction	Speed	MNM HLDG LVL	TIME	DIST NM
GIKER	292.6°T	282°	Left	K230-	A2200	1 MIN	-
VAMKI	022.3°T	012°	Right	K230-	A2200	1 MIN	-

WPT COORD
SEE PAGE EFMI AD 2.15 - 1

FINAL APPROACH PARAMETERS			
LNAV Gradient	Baro-VNAV		TCH
	VPA	MNM T	
6.12 % (3.50°)	3.50°	-20°C	50 FT

SBAS DATA	
Approach ID	E29A
Service Provider	EGNOS
CRC remainder	C5 FE 26 D3
Channel number	90943
Data Block	SEE EFMI AD 2.15 - 9