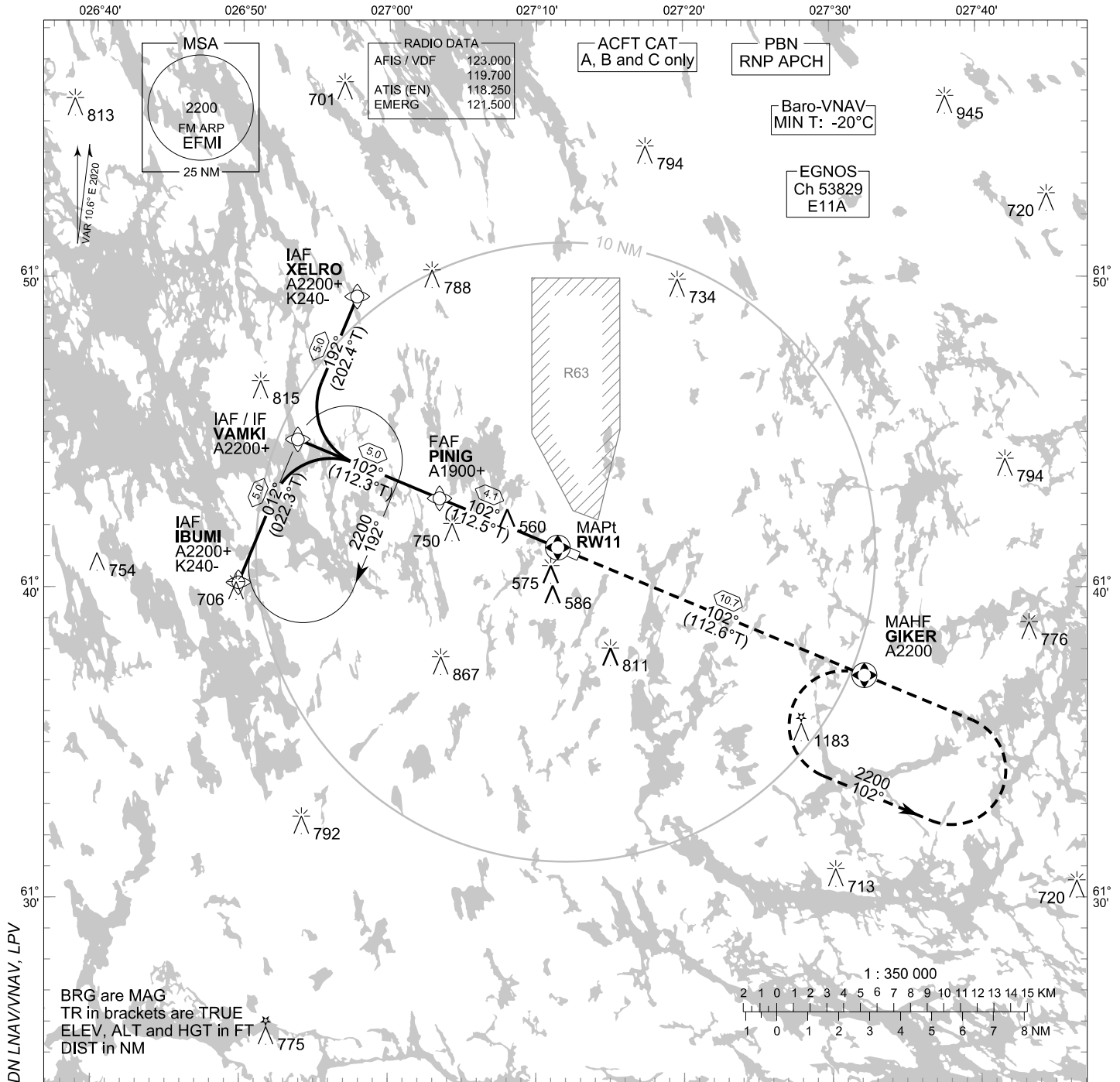


**INSTRUMENT  
APPROACH CHART - ICAO**

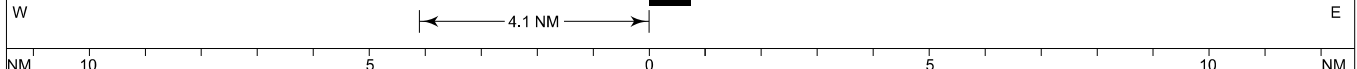
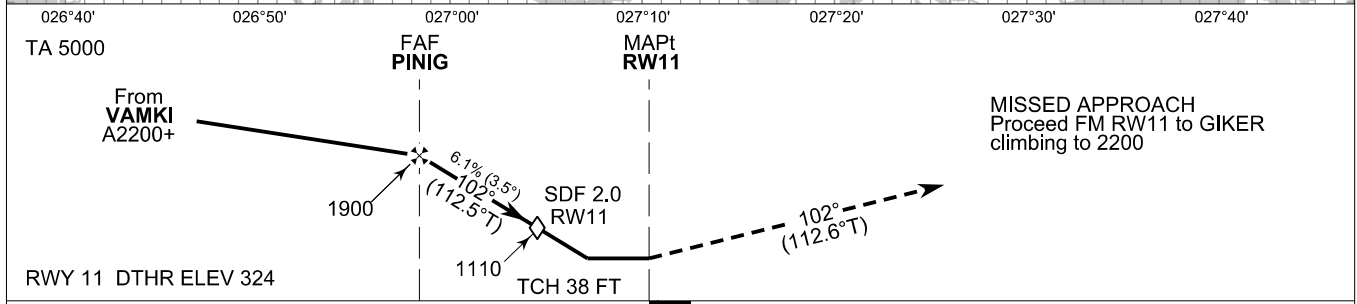
ELEV 330 FT  
HEIGHTS RELATED TO  
DTHR RWY 11 ELEV 324

RNP RWY 11  
MIKKELI AERODROME  
MIKKELI, FINLAND



BRG are MAG  
TR in brackets are TRUE  
ELEV, ALT and HGT in FT  
DIST in NM

CHG: MAG VAR, REF ELEV, ADDN LNAV/VNAV, LPV



OCA (H)	A	B	C
LPV	625 (301)	641 (317)	652 (328)
LNAV/VNAV	709 (385)	725 (401)	738 (414)
LNAV	810 (490)		
Circling	880 (550)	890 (560)	1210 (880)

NOTE: CIRCLING SOUTH OF AD ONLY

DIST FM THR	4.0 NM		3.0 NM		2.0 NM	
Altitude (Height)	1850 (1520)		1480 (1150)		1110 (780)	
	kt	90	100	120	140	160
FAF - MAPt 4.1 NM	min:sec	2:46	2:29	2:04	1:46	1:33
Rate of descent	ft/min	560	620	740	870	990

Timing not authorized for defining the MAPt

EFMI RNP RWY 11										
PROC ID NAV SPEC	SEQ NR	P/T	WPT			MAG GEO TR	DIST NM	Turn Direction	Constraints	
			ID	Type	Flyover				LVL	Speed
H11 XELRO RNP APCH	005	IF	XELRO	IAF	-	192°	5.0	L	A2200+	K240-
	010	TF	VAMKI	IF	-	202.4°T			102°	A2200+
	020	TF	PINIG	FAF	-	112.3°T	5.0		A1900+	
	030	TF	RW11	MAPt	Y	102°	4.1			
	040	TF	GIKER	MAHF	Y	112.5°T	10.7		A2200	

EFMI RNP RWY 11										
PROC ID NAV SPEC	SEQ NR	P/T	WPT			MAG GEO TR	DIST NM	Turn Direction	Constraints	
			ID	Type	Flyover				LVL	Speed
H11 VAMKI RNP APCH	010	IF	VAMKI	IAF/IF	-	102°	5.0		A2200+	
	020	TF	PINIG	FAF	-	112.3°T			102°	A1900+
	030	TF	RW11	MAPt	Y	112.5°T	4.1			
	040	TF	GIKER	MAHF	Y	102°	10.7		A2200	

EFMI RNP RWY 11										
PROC ID NAV SPEC	SEQ NR	P/T	WPT			MAG GEO TR	DIST NM	Turn Direction	Constraints	
			ID	Type	Flyover				LVL	Speed
H11 IBUMI RNP APCH	005	IF	IBUMI	IAF	-	012°	5.0	R	A2200+	K240-
	010	TF	VAMKI	IF	-	022.3°T			102°	A2200+
	020	TF	PINIG	FAF	-	112.3°T	5.0		A1900+	
	030	TF	RW11	MAPt	Y	102°	4.1			
	040	TF	GIKER	MAHF	Y	112.5°T	10.7		A2200	

RNAV Holdings							
ID	INBD TR	INBD MAG	Turn Direction	Speed	MNM HLDG LVL	TIME	DIST NM
VAMKI	022.3°T	012°	Right	K230-	A2200	1 MIN	-
GIKER	292.6°T	282°	Left	K230-	A2200	1 MIN	-

WPT COORD
SEE PAGE EFMI AD 2.15 - 1

FINAL APPROACH PARAMETERS			
LNAV Gradient	Baro-VNAV		TCH
	VPA	MNM T	
6.12 % (3.50°)	3.50°	-20°C	38 FT

SBAS DATA	
Approach ID	E11A
Service Provider	EGNOS
CRC remainder	50 83 D7 76
Channel number	53829
Data Block	SEE EFMI AD 2.15 - 9