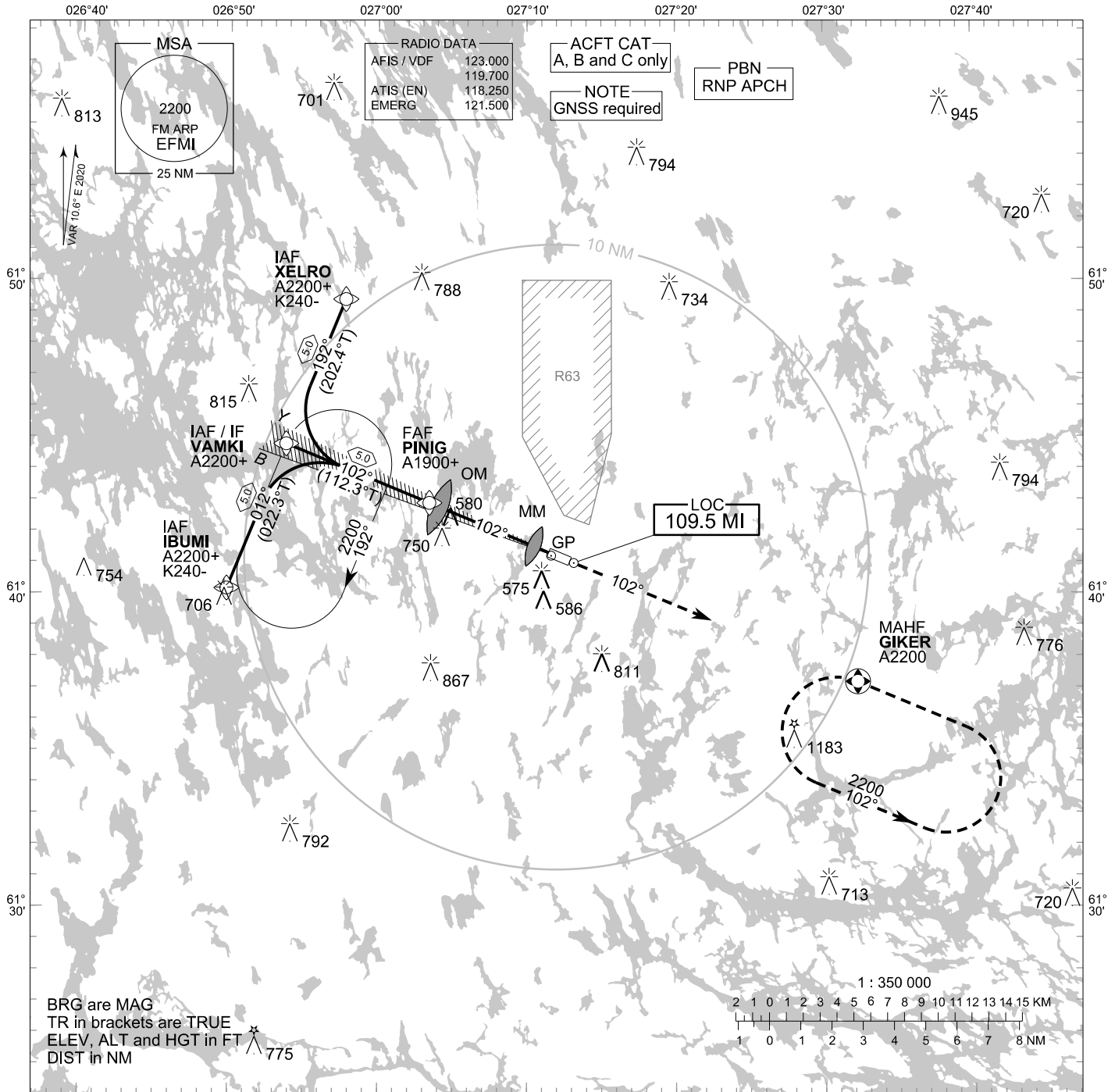


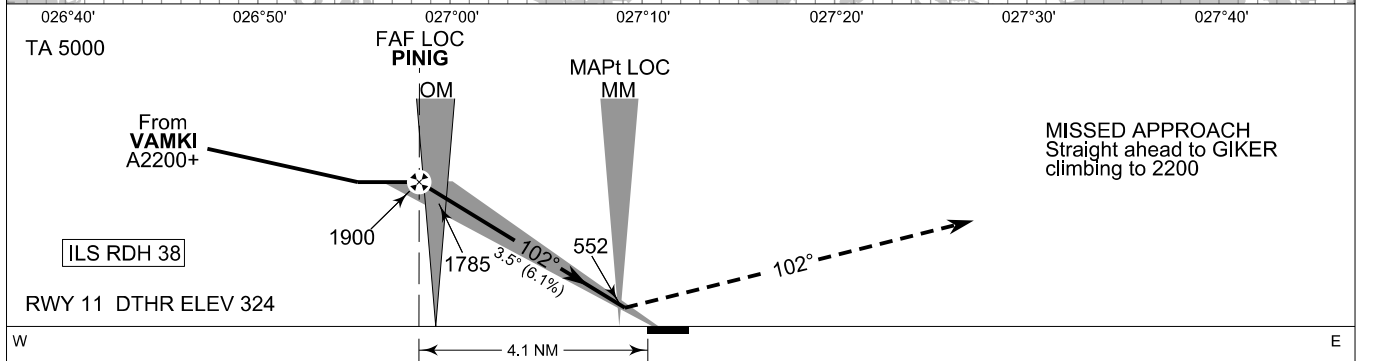
**INSTRUMENT  
APPROACH CHART - ICAO**

ELEV 330 FT  
HEIGHTS RELATED TO  
DTHR RWY 11 ELEV 324 FT

**ILS Z or LOC Z RWY 11  
MIKKELI AERODROME  
MIKKELI, FINLAND**



CHG: MAG VAR, OCA(H)



OCA (H)	A	B	C
ILS CAT I	520 (196)	528 (204)	537 (213)
LOC	830 (510)		
Circling	880 (550)	890 (560)	1210 (880)

	kt	90	100	120	140	160
FAF - MAPt 3.6 NM	min:sec	2:25	2:11	1:49	1:33	1:22
Rate of descent	ft/min	560	620	740	870	990

NOTE: CIRCLING SOUTH OF AD ONLY

Timing not authorized for defining the MAPt

EFMI ILS Z or LOC Z RWY 11										
PROC ID NAV SPEC	SEQ NR	P/T	WPT			MAG GEO TR	DIST NM	Turn Direction	Constraints	
			ID	Type	Flyover				LVL	Speed
I11 XELRO RNP APCH	005	IF	XELRO	IAF	-	192°	5.0	L	A2200+	K240-
	010	TF	VAMKI	IF	-	202.4°T			102°	A2200+
	020	TF	PINIG	FAF LOC	-	112.3°T	5.0		A1900+	
	030	TF	MM	MAPt LOC	Y	102°	-			
	040	CA	-	-	-	112.6°T	-		A900+	
	050	DF	GIKER	MAHF	Y	-	-		A2200	

EFMI ILS Z or LOC Z RWY 11										
PROC ID NAV SPEC	SEQ NR	P/T	WPT			MAG GEO TR	DIST NM	Turn Direction	Constraints	
			ID	Type	Flyover				LVL	Speed
I11 VAMKI RNP APCH	010	IF	VAMKI	IAF/IF	-	102°	5.0		A2200+	
	020	TF	PINIG	FAF LOC	-	112.3°T			A1900+	
	030	TF	MM	MAPt LOC	Y	102°	-			
	040	CA	-	-	-	112.6°T	-		A900+	
	050	DF	GIKER	MAHF	Y	-	-		A2200	

EFMI ILS Z or LOC Z RWY 11										
PROC ID NAV SPEC	SEQ NR	P/T	WPT			MAG GEO TR	DIST NM	Turn Direction	Constraints	
			ID	Type	Flyover				LVL	Speed
I11 IBUMI RNP APCH	005	IF	IBUMI	IAF	-	012°	5.0	R	A2200+	K240-
	010	TF	VAMKI	IF	-	022.3°T			102°	A2200+
	020	TF	PINIG	FAF LOC	-	112.3°T	5.0		A1900+	
	030	TF	MM	MAPt LOC	Y	102°	-			
	040	CA	-	-	-	112.6°T	-		A900+	
	050	DF	GIKER	MAHF	Y	-	-		A2200	

RNAV Holdings							
ID	INBD TR	INBD MAG	Turn Direction	Speed	MNM HLDG LVL	TIME	DIST NM
VAMKI	022.3°T	012°	Right	K230-	A2200	1 MIN	-
GIKER	292.6°T	282°	Left	K230-	A2200	1 MIN	-

WPT COORD
SEE PAGE EFMI AD 2.15 - 1

FINAL APPROACH PARAMETERS			
LOC Gradient	ILS		RDH
	CAT	GPA	
6.12 % (3.50°)	I	3.50°	38 FT