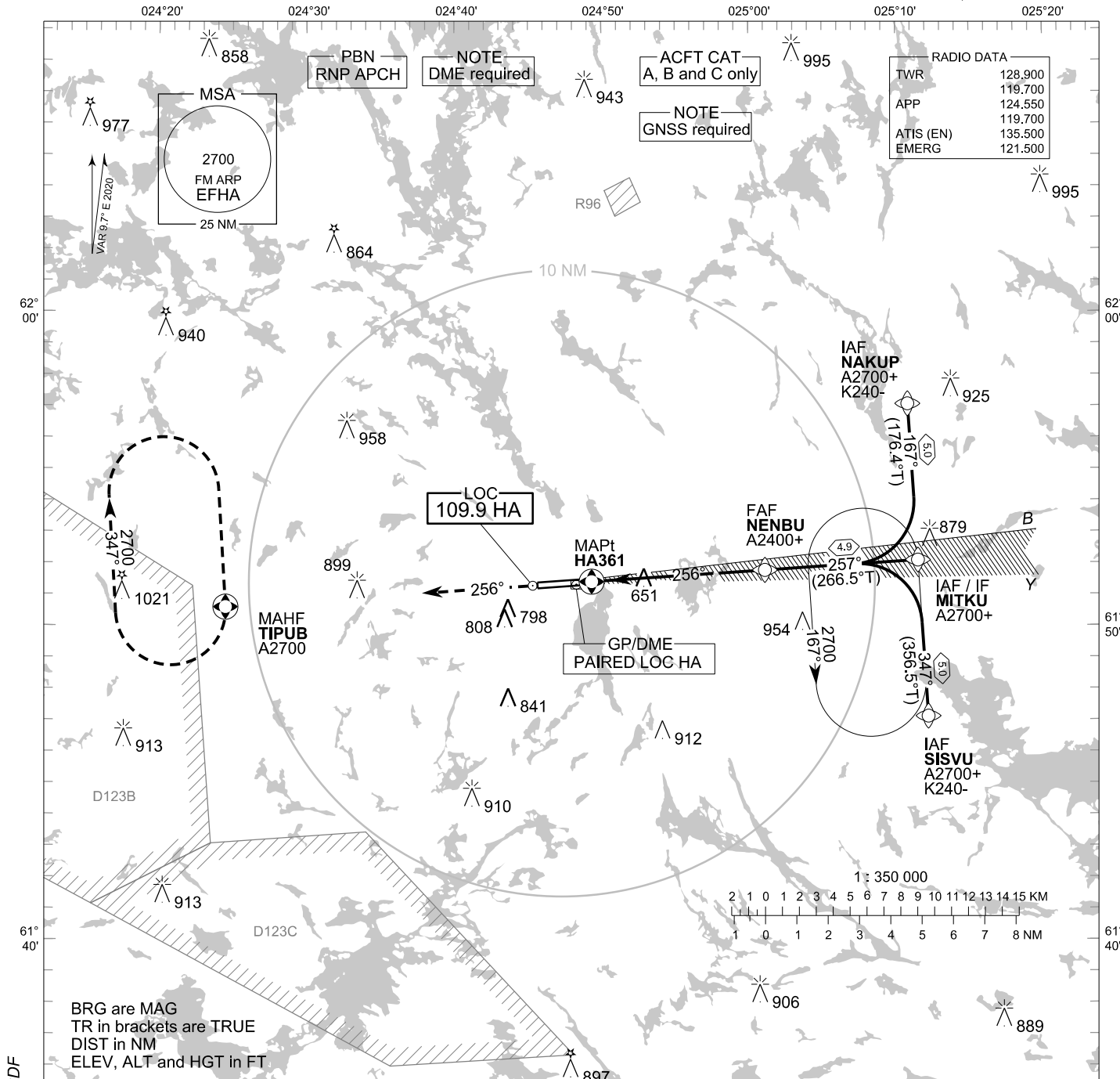


**INSTRUMENT
APPROACH CHART - ICAO**

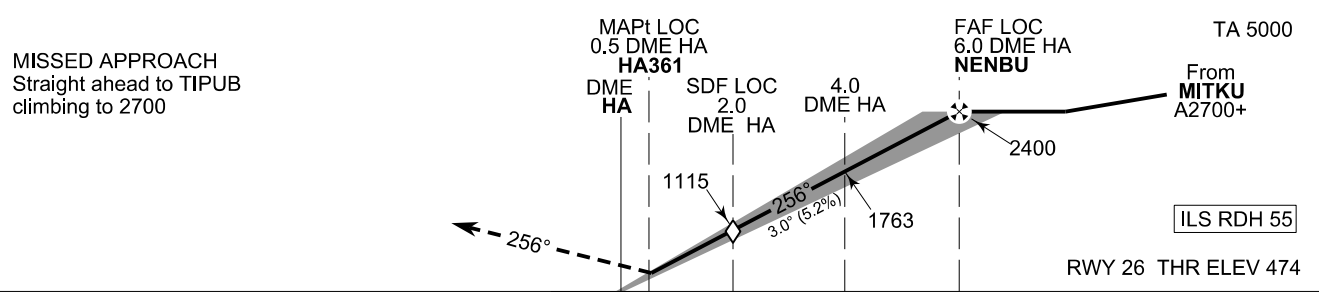
ELEV 481 FT
HEIGHTS RELATED TO
THR RWY 26 ELEV 474 FT

**ILS Z or LOC Z RWY 26
HALLI AERODROME
HALLI, FINLAND**



CHG: MAG VAR, OCA(H), ADDN SDF

BRG are MAG
TR in brackets are TRUE
DIST in NM
ELEV, ALT and HGT in FT



OCA (H)	A	B	C
ILS CAT I	625 (152)	635 (162)	648 (175)
LOC	900 (430)		
Circling	1100 (620)	1110 (630)	1240 (760)

	kt	90	100	120	140	160
FAF - MAPt 5.5 NM	min:sec	3:42	3:20	2:46	2:23	2:05
Rate of descent	ft/min	480	530	640	740	850

Timing not authorized for defining the MAPt

EFHA ILS Z or LOC Z RWY 26										
PROC ID NAV SPEC	SEQ NR	P/T	WPT			MAG GEO TR	DIST NM	Turn Direction	Constraints	
			ID	Type	Flyover				LVL	Speed
I26 SISVU RNP APCH	005	IF	SISVU	IAF	-	347°	5.0	L	A2700+	K240-
	010	TF	MITKU	IF	-	356.5°T			257°	A2700+
	020	TF	NENBU	FAF LOC	-	266.5°T	4.9		A2400+	
	030	TF	HA361	MAPt LOC	Y	256°	-		A1000+	
	040	CA	-	-	-	265.7°T				
	050	DF	TIPUB	MAHF	Y	-	-		A2700	

EFHA ILS Z or LOC Z RWY 26										
PROC ID NAV SPEC	SEQ NR	P/T	WPT			MAG GEO TR	DIST NM	Turn Direction	Constraints	
			ID	Type	Flyover				LVL	Speed
I26 MITKU RNP APCH	010	IF	MITKU	IAF/IF	-	257°	4.9		A2700+	
	020	TF	NENBU	FAF LOC	-	266.5°T			A2400+	
	030	TF	HA361	MAPt LOC	Y	256°	-		A1000+	
	040	CA	-	-	-	265.7°T				
	050	DF	TIPUB	MAHF	Y	-	-		A2700	

EFHA ILS Z or LOC Z RWY 26										
PROC ID NAV SPEC	SEQ NR	P/T	WPT			MAG GEO TR	DIST NM	Turn Direction	Constraints	
			ID	Type	Flyover				LVL	Speed
I26 NAKUP RNP APCH	005	IF	NAKUP	IAF	-	167°	5.0	R	A2700+	K240-
	010	TF	MITKU	IF	-	176.4°T			257°	A2700+
	020	TF	NENBU	FAF LOC	-	266.5°T	4.9		A2400+	
	030	TF	HA361	MAPt LOC	Y	256°	-		A1000+	
	040	CA	-	-	-	265.7°T				
	050	DF	TIPUB	MAHF	Y	-	-		A2700	

RNAV Holdings							
ID	INBD TR	INBD MAG	Turn Direction	MAX IAS	MNM HLDG LVL	TIME	DIST NM
MITKU	356.5°T	347°	Left	230 KT	A2700	1 MIN	-
TIPUB	176.4°T	167°	Right	230 KT	A2700	1 MIN	-

WPT COORD
SEE PAGE EFHA AD 2.15 - 1

FINAL APPROACH PARAMETERS			
LOC Gradient	ILS		RDH
	CAT	GPA	
5.24 % (3.00°)	I	3.00°	55 FT