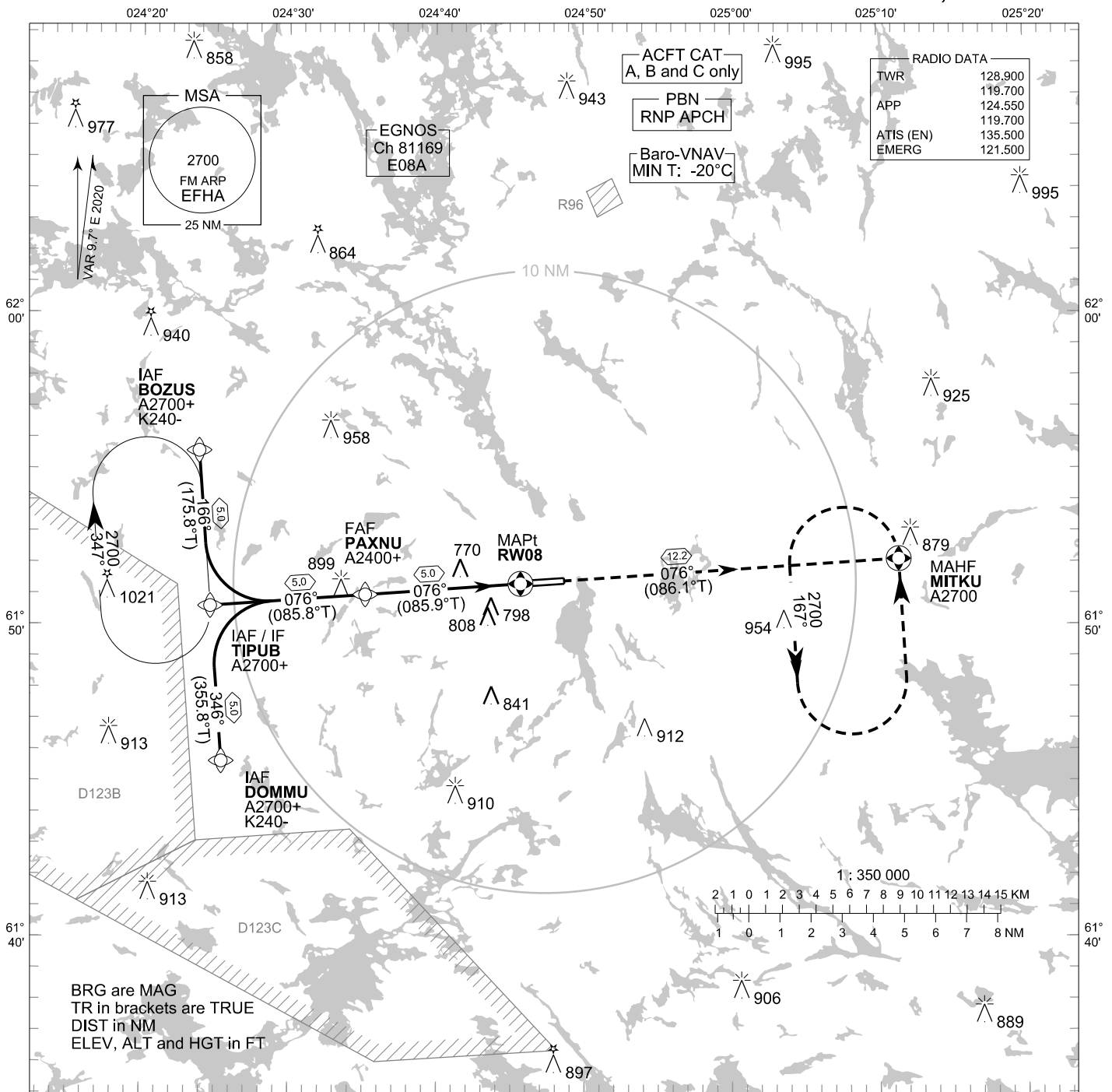


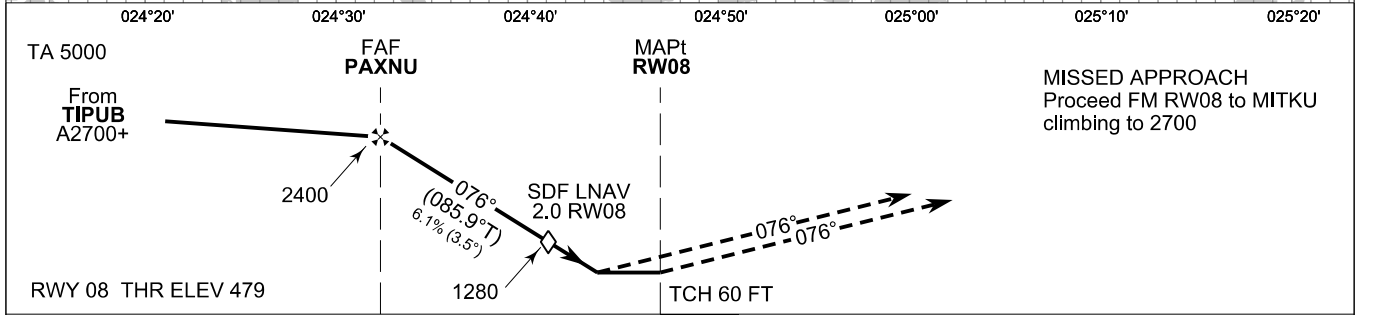
**INSTRUMENT
APPROACH CHART - ICAO**

ELEV 481 FT
HEIGHTS RELATED TO
THR RWY 08 ELEV 479 FT

**RNP RWY 08
HALLI AERODROME
HALLI, FINLAND**



CHG: ADDN LPV



NM	10	5	0	5	10	NM			
	OCA (H)								
	A	B	C						
LPV	831 (352)	847 (368)	859 (380)						
LNAV/VNAV	914 (435)	929 (450)	941 (462)						
LNAV	1020 (540)								
Circling	1100 (620)	1110 (630)	1240 (760)						
	DIST FM THR		5.0 NM	4.0 NM	3.0 NM	2.0 NM			
	Altitude (Height)		2400 (1920)	2030 (1550)	1660 (1180)	1280 (800)			
			kt	90	100	120	140	160	
	FAF - MAPt 5.0 NM		min:sec	3:20	3:00	2:30	2:09	1:53	
			Rate of descent	ft/min	560	620	740	870	990
Timing not authorized for defining the MAPt									

EFHA RNP RWY 08										
PROC ID NAV SPEC	SEQ NR	P/T	WPT			MAG GEO TR	DIST NM	Turn Direction	Constraints	
			ID	Type	Flyover				LVL	Speed
H08 BOZUS RNP APCH	005	IF	BOZUS	IAF	-	166°	5.0	L	A2700+	K240-
	010	TF	TIPUB	IF	-	175.8°T			076°	A2700+
	020	TF	PAXNU	FAF	-	085.8°T	076°	A2400+		
	030	TF	RW08	MAPt	Y	085.9°T	076°			
	040	TF	MITKU	MAHF	Y	086.1°T	12.2		A2700	

EFHA RNP RWY 08										
PROC ID NAV SPEC	SEQ NR	P/T	WPT			MAG GEO TR	DIST NM	Turn Direction	Constraints	
			ID	Type	Flyover				LVL	Speed
H08 TIPUB RNP APCH	010	IF	TIPUB	IAF/IF	-	076°	5.0		A2700+	
	020	TF	PAXNU	FAF	-	085.8°T			076°	A2400+
	030	TF	RW08	MAPt	Y	085.9°T	076°			
	040	TF	MITKU	MAHF	Y	086.1°T	12.2		A2700	

EFHA RNP RWY 08										
PROC ID NAV SPEC	SEQ NR	P/T	WPT			MAG GEO TR	DIST NM	Turn Direction	Constraints	
			ID	Type	Flyover				LVL	Speed
H08 DOMMU RNP APCH	005	IF	DOMMU	IAF	-	346°	5.0	R	A2700+	K240-
	010	TF	TIPUB	IF	-	355.8°T			076°	A2700+
	020	TF	PAXNU	FAF	-	085.8°T	076°	A2400+		
	030	TF	RW08	MAPt	Y	085.9°T	076°			
	040	TF	MITKU	MAHF	Y	086.1°T	12.2		A2700	

RNAV Holdings							
ID	INBD TR	INBD MAG	Turn Direction	Speed	MNM HLDG LVL	TIME	DIST NM
TIPUB	176.4°T	167°	Right	K230-	A2700	1 MIN	-
MITKU	356.5°T	347°	Left	K230-	A2700	1 MIN	-

WPT COORD
SEE PAGE EFHA AD 2.15 - 1

FINAL APPROACH PARAMETERS			
LNAV Gradient	Baro-VNAV		TCH
	VPA	MNM T	
6.12 % (3.50°)	3.50°	-20°C	60 FT

SBAS DATA	
Approach ID	E08A
Service Provider	EGNOS
CRC remainder	8C 89 B2 6F
Channel number	81169
Data Block	SEE EFHA AD 2.15 - 9