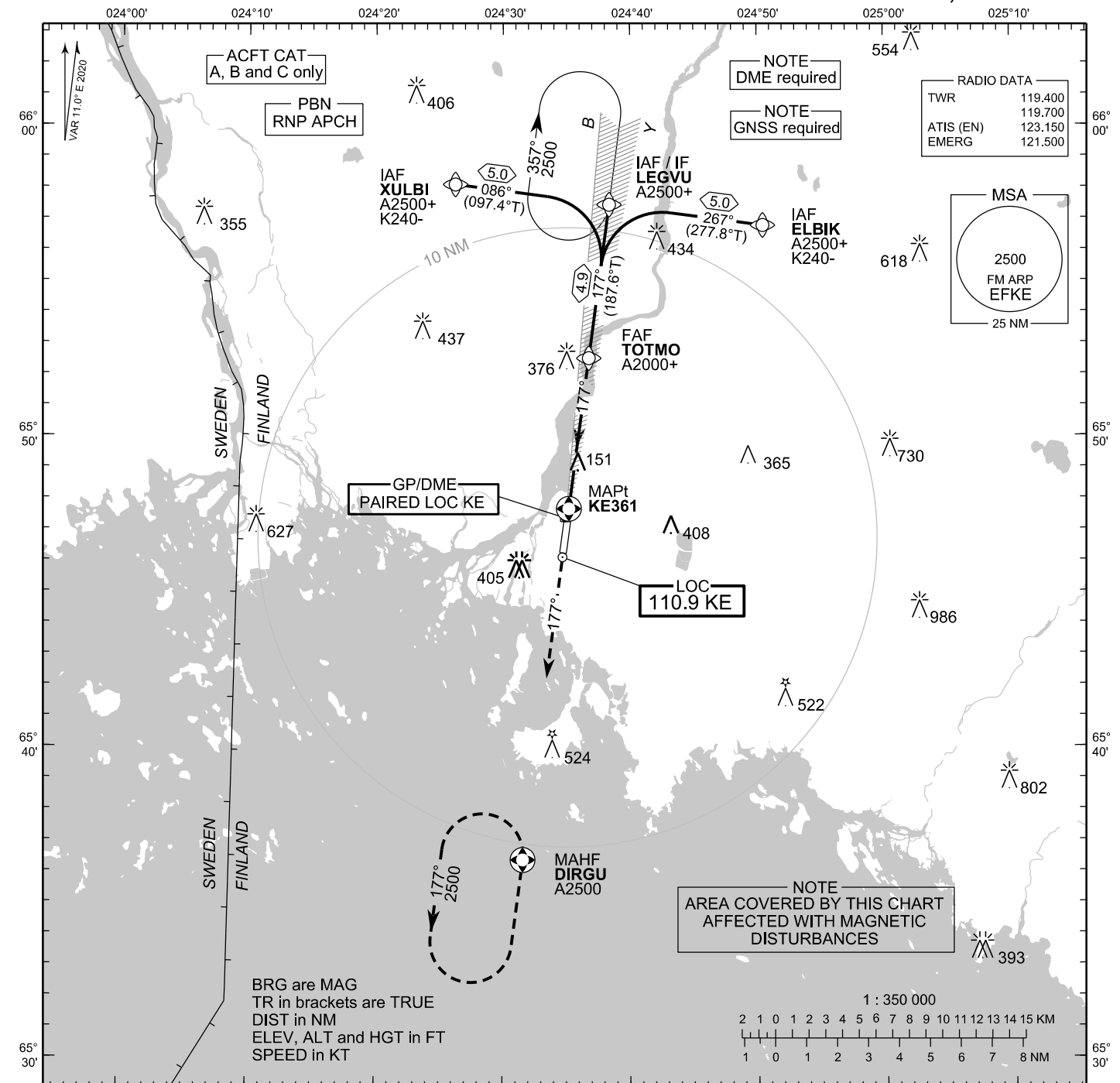


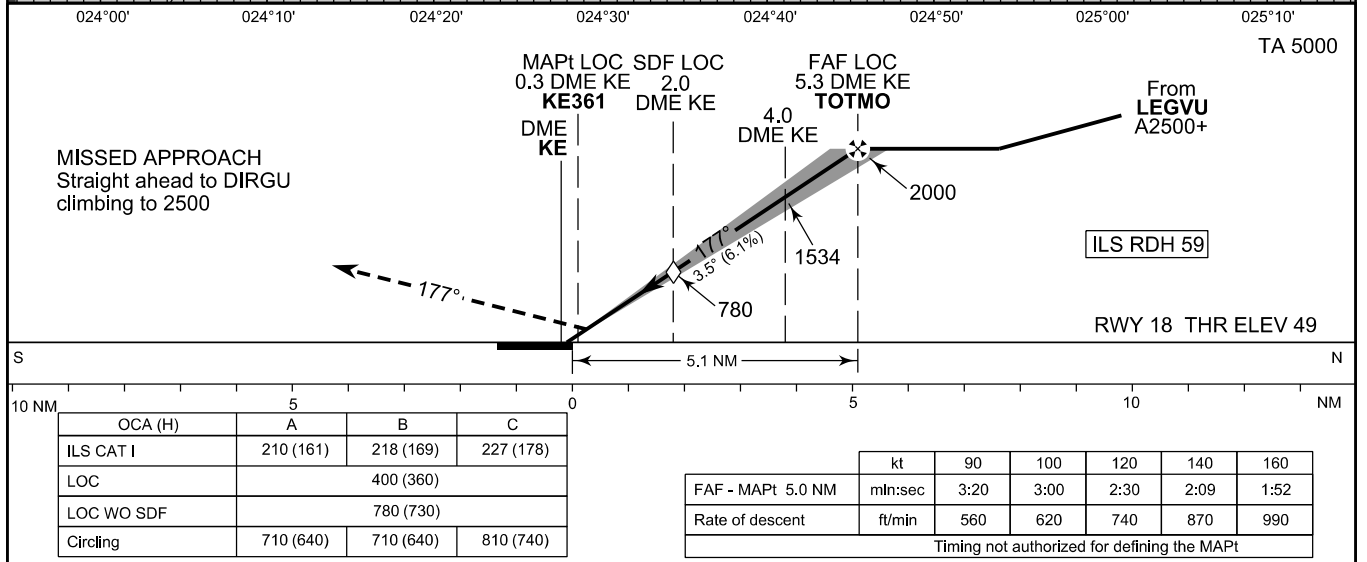
**INSTRUMENT
APPROACH CHART - ICAO**

ELEV 62 FT
HEIGHTS RELATED TO
THR RWY 18 ELEV 49 FT

**ILS Z or LOC Z RWY 18
KEMI-TORNIO AERODROME
KEMI, FINLAND**



CHG: Circling OCA(H)



EFKE ILS Z or LOC Z RWY 18										
PROC ID NAV SPEC	SEQ NR	P/T	WPT			MAG	GEO TR	DIST NM	Constraints	
			ID	Type	Flyover				LVL	Speed
I18 ELBIK RNP APCH	005	IF	ELBIK	IAF	-	267°	277.8°T	5.0	A2500+	K240-
	010	TF	LEGVU	IF	-				A2500+	
	020	TF	TOTMO	FAF LOC	-	177°	187.6°T	4.9	A2000+	
	030	TF	KE361	MAPt LOC	Y	177°	188.0°T	-		
	040	CA	-	-	-				A500+	
	050	DF	DIRGU	MAHF	Y	-	-	-	A2500	

EFKE ILS Z or LOC Z RWY 18										
PROC ID NAV SPEC	SEQ NR	P/T	WPT			MAG	GEO TR	DIST NM	Constraints	
			ID	Type	Flyover				LVL	Speed
I18 LEGVU RNP APCH	010	IF	LEGVU	IAF/IF	-	177°	187.6°T	4.9	A2500+	
	020	TF	TOTMO	FAF LOC	-				A2000+	
	030	TF	KE361	MAPt LOC	Y	177°	188.0°T	-		
	040	CA	-	-	-				A500+	
	050	DF	DIRGU	MAHF	Y	-	-	-	A2500	

EFKE ILS Z or LOC Z RWY 18										
PROC ID NAV SPEC	SEQ NR	P/T	WPT			MAG	GEO TR	DIST NM	Constraints	
			ID	Type	Flyover				LVL	Speed
I18 XULBI RNP APCH	005	IF	XULBI	IAF	-	086°	097.4°T	5.0	A2500+	K240-
	010	TF	LEGVU	IF	-				A2500+	
	020	TF	TOTMO	FAF LOC	-	177°	187.6°T	4.9	A2000+	
	030	TF	KE361	MAPt LOC	Y	177°	188.0°T	-		
	040	CA	-	-	-				A500+	
	050	DF	DIRGU	MAHF	Y	-	-	-	A2500	

RNAV Holdings							
ID	INBD TR	INBD MAG	Turn Direction	Speed	MNM HLDG LVL	TIME	DIST NM
LEGVU	187.5°T	177°	Right	K230-	A2500	1 MIN	-
DIRGU	007.5°T	357°	Left	K230-	A2500	1 MIN	-

WPT COORD
SEE PAGE EFKE AD 2.15 - 1

FINAL APPROACH PARAMETERS			
LOC Gradient	ILS		RDH
	CAT	GPA	
6.12 % (3.50°)	I	3.50°	59 FT