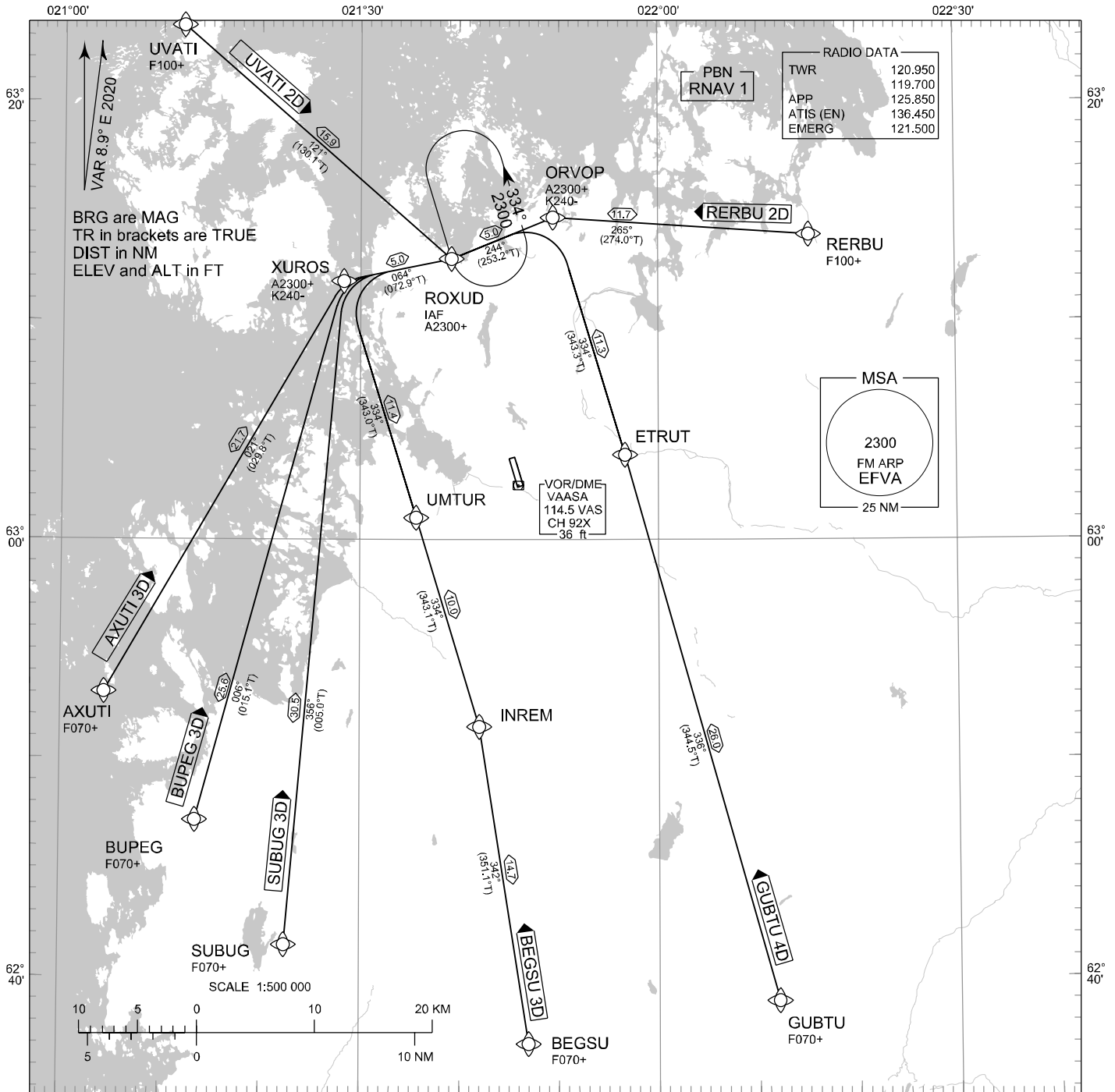


STANDARD ARRIVAL CHART
INSTRUMENT (STAR) - ICAO

TRANSITION ALT
5000

RNAV (GNSS) STAR RWY 16
VAASA AERODROME
VAASA, FINLAND



RNAV STAR RWY 16

AXUTI 3D BEGSU 3D BUPEG 3D GUBTU 4D RERBU 2D SUBUG 3D UVATI 2D

RCF: SELECT TRANSPONDER CODE 7600

DME/DME OPS: NOT SUPPORTED

RNAV STAR HAS BEEN GIVEN AND ACKNOWLEDGED:
FOLLOW THE STAR TO THE RESPECTIVE RWY AND
EXECUTE IAP AND LAND

ROUTES: RNAV PROC CODING ON THE VERSO OF THE CHART
ATC WILL GIVE DESCENT CLEARANCES

DURING RADAR VECTORED BEFORE IAF:
IN ACCORDANCE WITH THE RULES OF THE AIR

WPT CONSTRAINTS: ALT / FL / SPEED CONSTRAINTS MUST ALWAYS BE FOLLOWED AS
PUBLISHED UNLESS EXPLICITLY CANCELLED BY ATC

AREA MNM ALT: SEE AMA INDEX, AIP ENR 6.1 - 3

CD OPS: BY ATC CLR IF TFC PERMITS. PLAN CD PATH ACCORDING TO STAR

NOISE ABATEMENT: AVOID OVERFLYING THE CITY OF VAASA BELOW 2000

CHG: MAG VAR, PBN

EFVA RNAV STAR RWY 16										
RTE NAV SPEC	SEQ NR	P/T	WPT		MAG	GEO TR	DIST NM	Turn Direction	Constraints	
			ID	Flyover					LVL	Speed
AXUTI 3D RNAV 1	010	IF	AXUTI	-	-	-	-		F070+	
	020	TF	XUROS	-	021°	029.8°T	21.7	R	A2300+	K240-
	030	TF	ROXUD	-	064°	072.9°T	5.0		A2300+	

BEGSU 3D RNAV 1	010	IF	BEGSU	-	-	-	-		F070+	
	020	TF	INREM	-	342°	351.1°T	14.7			
	030	TF	UMTUR	-	334°	343.1°T	10.0			
	040	TF	XUROS	-	334°	343.0°T	11.4	R	A2300+	K240-
	050	TF	ROXUD	-	064°	072.9°T	5.0		A2300+	

BUPEG 3D RNAV 1	010	IF	BUPEG	-	-	-	-		F070+	
	020	TF	XUROS	-	006°	015.1°T	25.6	R	A2300+	K240-
	030	TF	ROXUD	-	064°	072.9°T	5.0		A2300+	

GUBTU 4D RNAV 1	010	IF	GUBTU	-	-	-	-		F070+	
	020	TF	ETRUT	-	336°	344.5°T	26.0			
	030	TF	ORVOP	-	334°	343.3°T	11.3	L	A2300+	K240-
	040	TF	ROXUD	-	244°	253.2°T	5.0		A2300+	

RERBU 2D RNAV 1	010	IF	RERBU	-	-	-	-		F100+	
	020	TF	ORVOP	-	265°	274.0°T	11.7		A2300+	K240-
	030	TF	ROXUD	-	244°	253.2°T	5.0		A2300+	

SUBUG 3D RNAV 1	010	IF	SUBUG	-	-	-	-		F070+	
	020	TF	XUROS	-	356°	005.0°T	30.5	R	A2300+	K240-
	030	TF	ROXUD	-	064°	072.9°T	5.0		A2300+	

UVATI 2D RNAV 1	010	IF	UVATI	-	-	-	-		F100+	
	020	TF	ROXUD	-	121°	130.1°T	15.9		A2300+	

RNAV Holdings								
ID	INBD TR	INBD MAG	Turn Direction	Speed	MNM HLDG LVL	TIME	DIST NM	
ROXUD	163.2°T	154°	Left	K230-	A2300	1 MIN	-	

WPT COORD
SEE PAGE EFVA AD 2.15 - 1