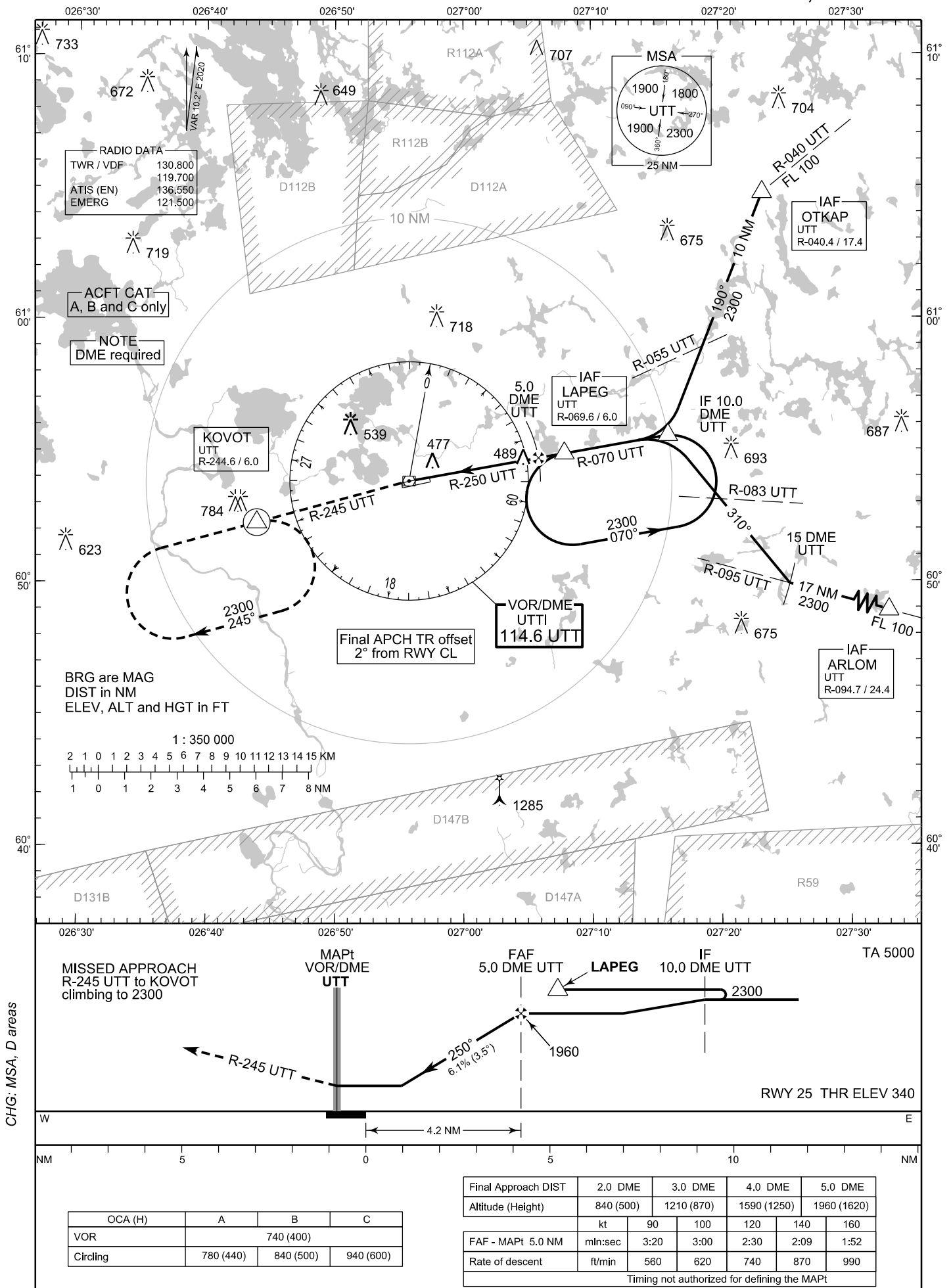


**INSTRUMENT
APPROACH CHART - ICAO**

ELEV 340 FT
HEIGHTS RELATED TO
AERODROME ELEV

**VOR RWY 25
UTTI AERODROME
UTTI, FINLAND**



OCA (H)	A	B	C
VOR	740 (400)		
Circling	780 (440)	840 (500)	940 (600)

Final Approach DIST	2.0 DME	3.0 DME	4.0 DME	5.0 DME		
Altitude (Height)	840 (500)	1210 (870)	1590 (1250)	1960 (1620)		
	kt	90	100	120	140	160
FAF - MAPt 5.0 NM	min:sec	3:20	3:00	2:30	2:09	1:52
Rate of descent	ft/min	560	620	740	870	990

Timing not authorized for defining the MAPt