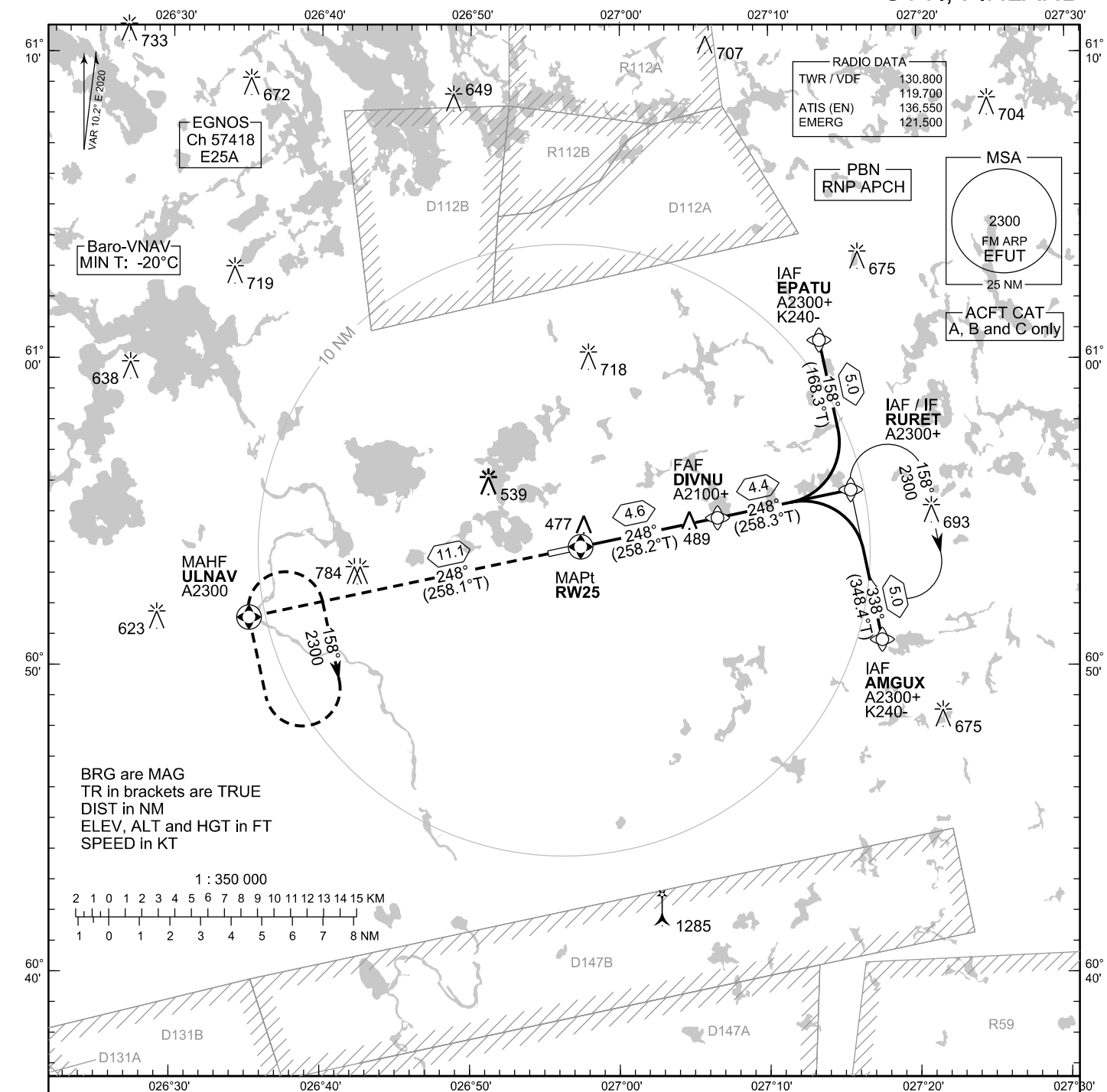


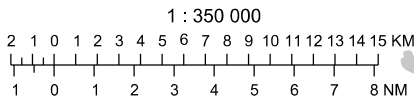
**INSTRUMENT  
APPROACH CHART - ICAO**

ELEV 340 FT  
HEIGHTS RELATED TO  
THR RWY 25 ELEV 340 FT

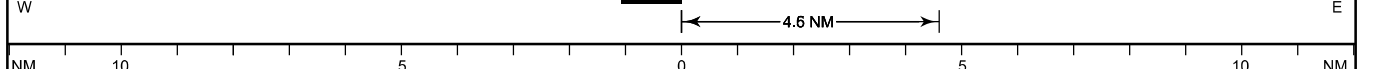
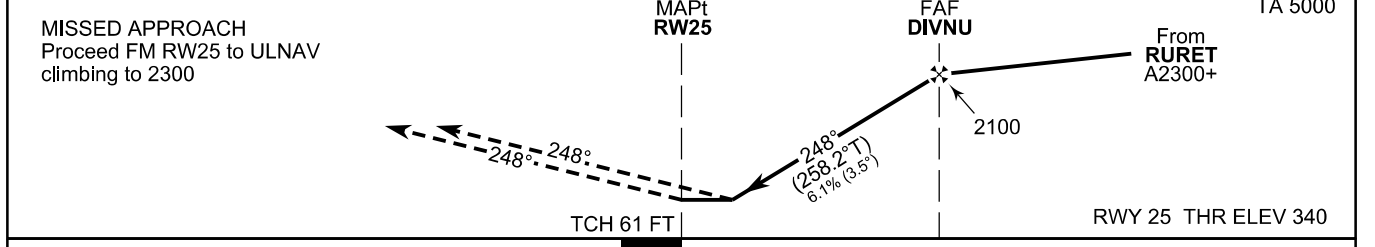
**RNP RWY 25  
UTTI AERODROME  
UTTI, FINLAND**



BRG are MAG  
TR in brackets are TRUE  
DIST in NM  
ELEV, ALT and HGT in FT  
SPEED in KT



CHG: D areas



OCA (H)	A	B	C
LPV	620 (281)	636 (297)	647 (308)
LNAV/VNAV	621 (282)	636 (297)	648 (309)
LNAV	740 (400)		
Circling	780 (440)	840 (500)	940 (600)

DIST FM THR	1.0 NM	2.0 NM	3.0 NM	4.0 NM		
Altitude (Height)	770 (430)	1140 (800)	1520 (1180)	1890 (1550)		
FAF - MAPt 4.6 NM	kt	90	100	120	140	160
	min:sec	3:03	2:45	2:17	1:58	1:43
Rate of descent	ft/min	560	620	740	870	990

Timing not authorized for defining the MAPt

EFUT RNP RWY 25										
PROC ID NAV SPEC	SEQ NR	P/T	WPT			MAG	GEO TR	DIST NM	Constraints	
			ID	Type	Flyover				LVL	Speed
H25 AMGUX RNP APCH	005	IF	AMGUX	IAF	-				A2300+	K240-
	010	TF	RURET	IF	-	338°	348.4°T	5.0	A2300+	
	020	TF	DIVNU	FAF	-	248°	258.3°T	4.4	A2100+	
	030	TF	RW25	MAPt	Y	248°	258.2°T	4.6		
	040	TF	ULNAV	MAHF	Y	248°	258.1°T	11.1	A2300	

EFUT RNP RWY 25										
PROC ID NAV SPEC	SEQ NR	P/T	WPT			MAG	GEO TR	DIST NM	Constraints	
			ID	Type	Flyover				LVL	Speed
H25 RURET RNP APCH	010	IF	RURET	IAF/IF	-				A2300+	
	020	TF	DIVNU	FAF	-	248°	258.3°T	4.4	A2100+	
	030	TF	RW25	MAPt	Y	248°	258.2°T	4.6		
	040	TF	ULNAV	MAHF	Y	248°	258.1°T	11.1	A2300	

EFUT RNP RWY 25										
PROC ID NAV SPEC	SEQ NR	P/T	WPT			MAG	GEO TR	DIST NM	Constraints	
			ID	Type	Flyover				LVL	Speed
H25 EPATU RNP APCH	005	IF	EPATU	IAF	-				A2300+	K240-
	010	TF	RURET	IF	-	158°	168.3°T	5.0	A2300+	
	020	TF	DIVNU	FAF	-	248°	258.3°T	4.4	A2100+	
	030	TF	RW25	MAPt	Y	248°	258.2°T	4.6		
	040	TF	ULNAV	MAHF	Y	248°	258.1°T	11.1	A2300	

RNAV Holdings							
ID	INBD TR	INBD MAG	Turn Direction	Speed	MNM HLDG LVL	TIME	DIST NM
RURET	348.4°T	338°	Right	K230-	A2300	1 MIN	-
ULNAV	347.8°T	338°	Right	K230-	A2300	1 MIN	-

WPT COORD
SEE PAGE EFUT AD 2.15 - 1

FINAL APPROACH PARAMETERS			
LNAV Gradient	Baro-VNAV		TCH
	VPA	MNM T	
6.12 % (3.50°)	3.50°	-20°C	61 FT

SBAS DATA	
Approach ID	E25A
Service Provider	EGNOS
CRC remainder	57 C0 86 A0
Channel number	57418
Data Block	SEE EFUT AD 2.15 - 9