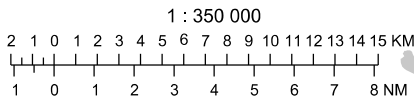
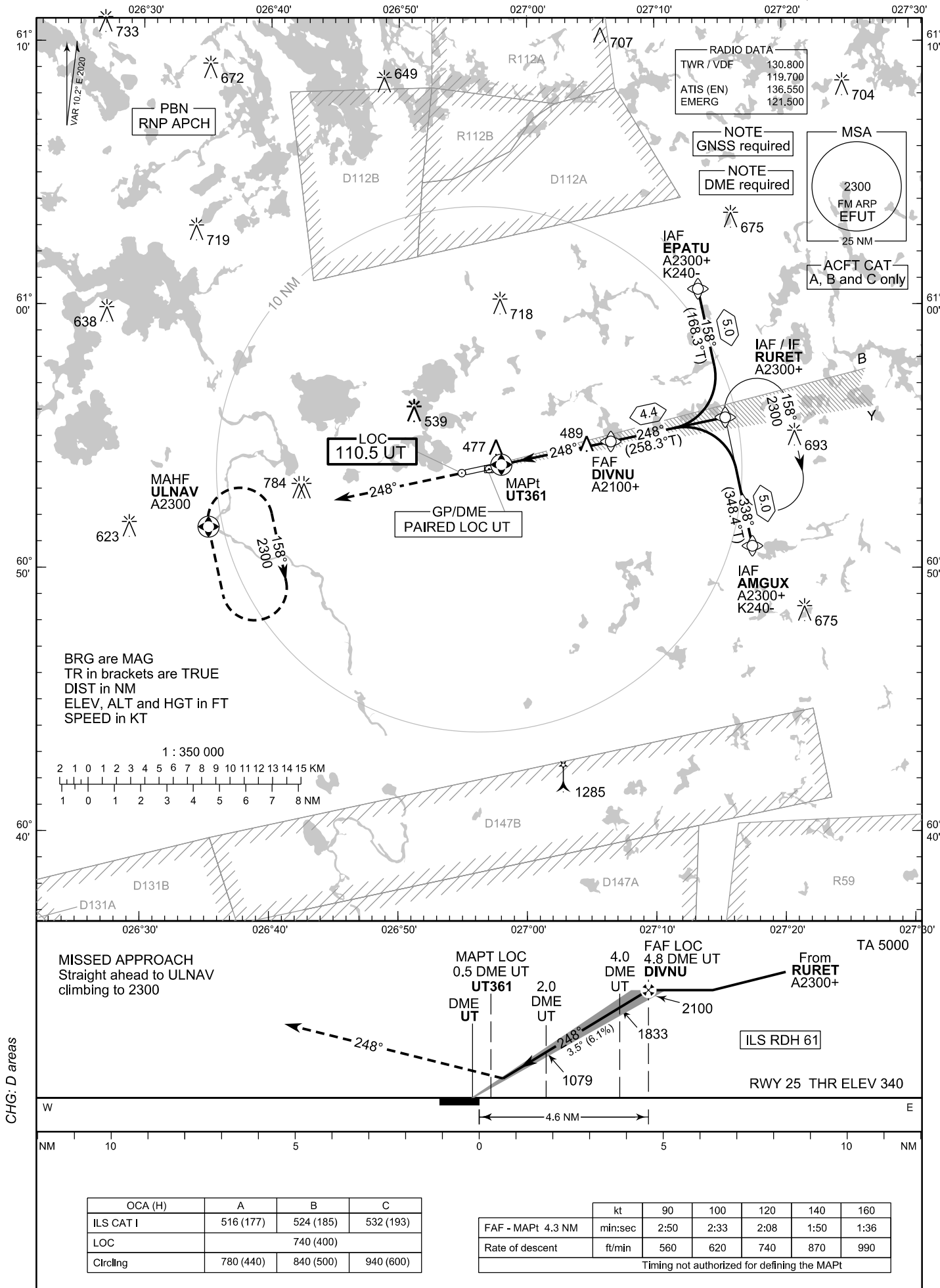


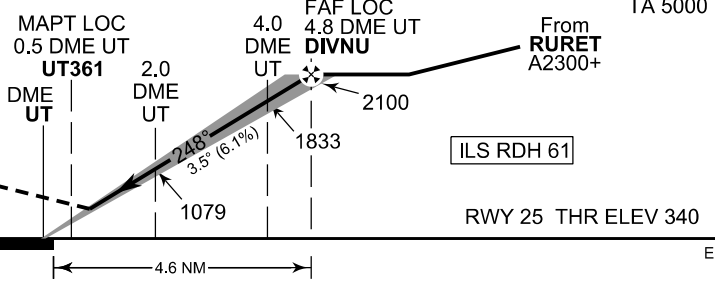
**INSTRUMENT
APPROACH CHART - ICAO**

ELEV 340 FT
HEIGHTS RELATED TO
THR RWY 25 ELEV 340 FT

**ILS Z or LOC Z RWY 25
UTTI AERODROME
UTTI, FINLAND**



MISSED APPROACH
Straight ahead to ULNAV
climbing to 2300



	kt	90	100	120	140	160
FAF - MAPt 4.3 NM	min:sec	2:50	2:33	2:08	1:50	1:36
Rate of descent	ft/min	560	620	740	870	990

Timing not authorized for defining the MAPt

EFUT ILS Z or LOC Z RWY 25										
PROC ID NAV SPEC	SEQ NR	P/T	WPT			MAG	GEO TR	DIST NM	Constraints	
			ID	Type	Flyover				LVL	Speed
I25 AMGUX RNP APCH	005	IF	AMGUX	IAF	-				A2300+	K240-
	010	TF	RURET	IF	-	338°	348.4°T	5.0	A2300+	
	020	TF	DIVNU	FAF LOC	-	248°	258.3°T	4.4	A2100+	
	030	TF	UT361	MAPt LOC	Y					
	040	CA	-	-	-	248°	258.2°T	-	A1000+	
	050	DF	ULNAV	MAHF	Y	-	-	-	A2300	

EFUT ILS Z or LOC Z RWY 25										
PROC ID NAV SPEC	SEQ NR	P/T	WPT			MAG	GEO TR	DIST NM	Constraints	
			ID	Type	Flyover				LVL	Speed
I25 RURET RNP APCH	010	IF	RURET	IAF/IF	-				A2300+	
	020	TF	DIVNU	FAF LOC	-	248°	258.3°T	4.4	A2100+	
	030	TF	UT361	MAPt LOC	Y					
	040	CA	-	-	-	248°	258.2°T	-	A1000+	
	050	DF	ULNAV	MAHF	Y	-	-	-	A2300	

EFUT ILS Z or LOC Z RWY 25										
PROC ID NAV SPEC	SEQ NR	P/T	WPT			MAG	GEO TR	DIST NM	Constraints	
			ID	Type	Flyover				LVL	Speed
I25 EPATU RNP APCH	005	IF	EPATU	IAF	-				A2300+	K240-
	010	TF	RURET	IF	-	158°	168.3°T	5.0	A2300+	
	020	TF	DIVNU	FAF LOC	-	248°	258.3°T	4.4	A2100+	
	030	TF	UT361	MAPt LOC	Y					
	040	CA	-	-	-	248°	258.2°T	-	A1000+	
	050	DF	ULNAV	MAHF	Y	-	-	-	A2300	

RNAV Holdings							
ID	INBD TR	INBD MAG	Turn Direction	Speed	MNM HLDG LVL	TIME	DIST NM
RURET	348.4°T	338°	Right	K230-	A2300	1 MIN	-
ULNAV	347.8°T	338°	Right	K230-	A2300	1 MIN	-

WPT COORD
SEE PAGE EFUT AD 2.15 - 1

FINAL APPROACH PARAMETERS			
LOC Gradient	ILS		RDH
	CAT	GPA	
6.12 % (3.50°)	I	3.50°	61 FT