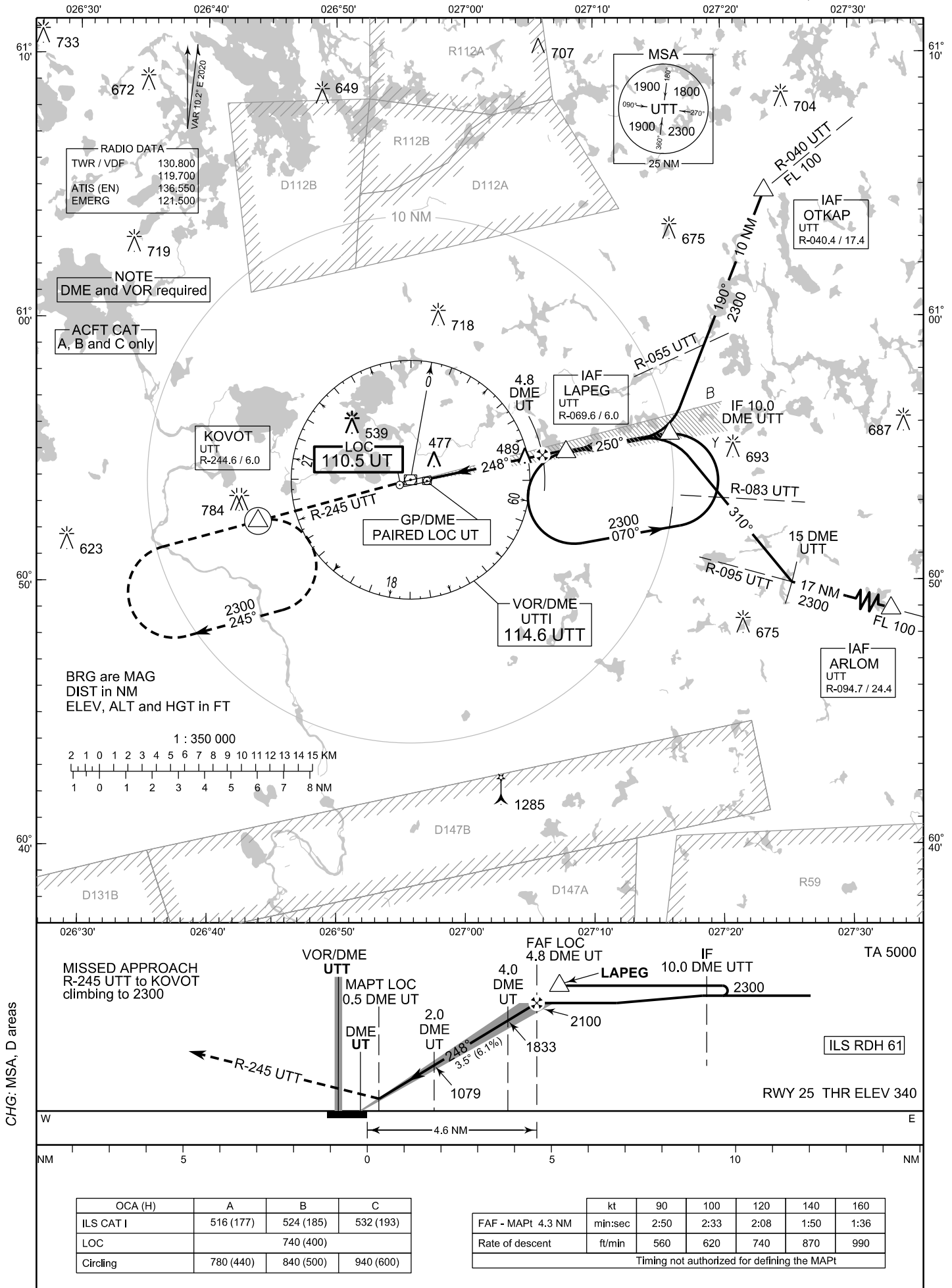


**INSTRUMENT
APPROACH CHART - ICAO**

ELEV 340 FT
HEIGHTS RELATED TO
THR RWY 25 ELEV 340 FT

**ILS Y or LOC Y RWY 25
UTTI AERODROME
UTTI, FINLAND**



RADIO DATA
TWR / VDF 130.800
ATIS (EN) 119.700
EMERG 136.550
121.500

NOTE
DME and VOR required

ACFT CAT
A, B and C only

KOVOT
UTT
R-244.6 / 6.0

LOC
110.5 UT

VOR/DME
UTTI
114.6 UTT

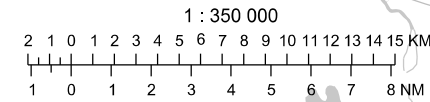
IAF LAPEG
UTT
R-069.6 / 6.0

IF 10.0
DME UTT

IAF ARLOM
UTT
R-094.7 / 24.4

IAF OTKAP
UTT
R-040.4 / 17.4

BRG are MAG
DIST in NM
ELEV, ALT and HGT in FT



MISSED APPROACH
R-245 UTT to KOVOT
climbing to 2300

VOR/DME
UTT

FAF LOC
4.8 DME UT

IF
10.0 DME UTT

TA 5000

R-245 UTT

MAPt LOC
0.5 DME UT

4.0 DME UT

2100

LAPEG

ILS RDH 61

RWY 25 THR ELEV 340

OCA (H)	A	B	C
ILS CAT I	516 (177)	524 (185)	532 (193)
LOC	740 (400)		
Circling	780 (440)	840 (500)	940 (600)

	kt	90	100	120	140	160
FAF - MAPt 4.3 NM	min:sec	2:50	2:33	2:08	1:50	1:36
Rate of descent	ft/min	560	620	740	870	990

Timing not authorized for defining the MAPt