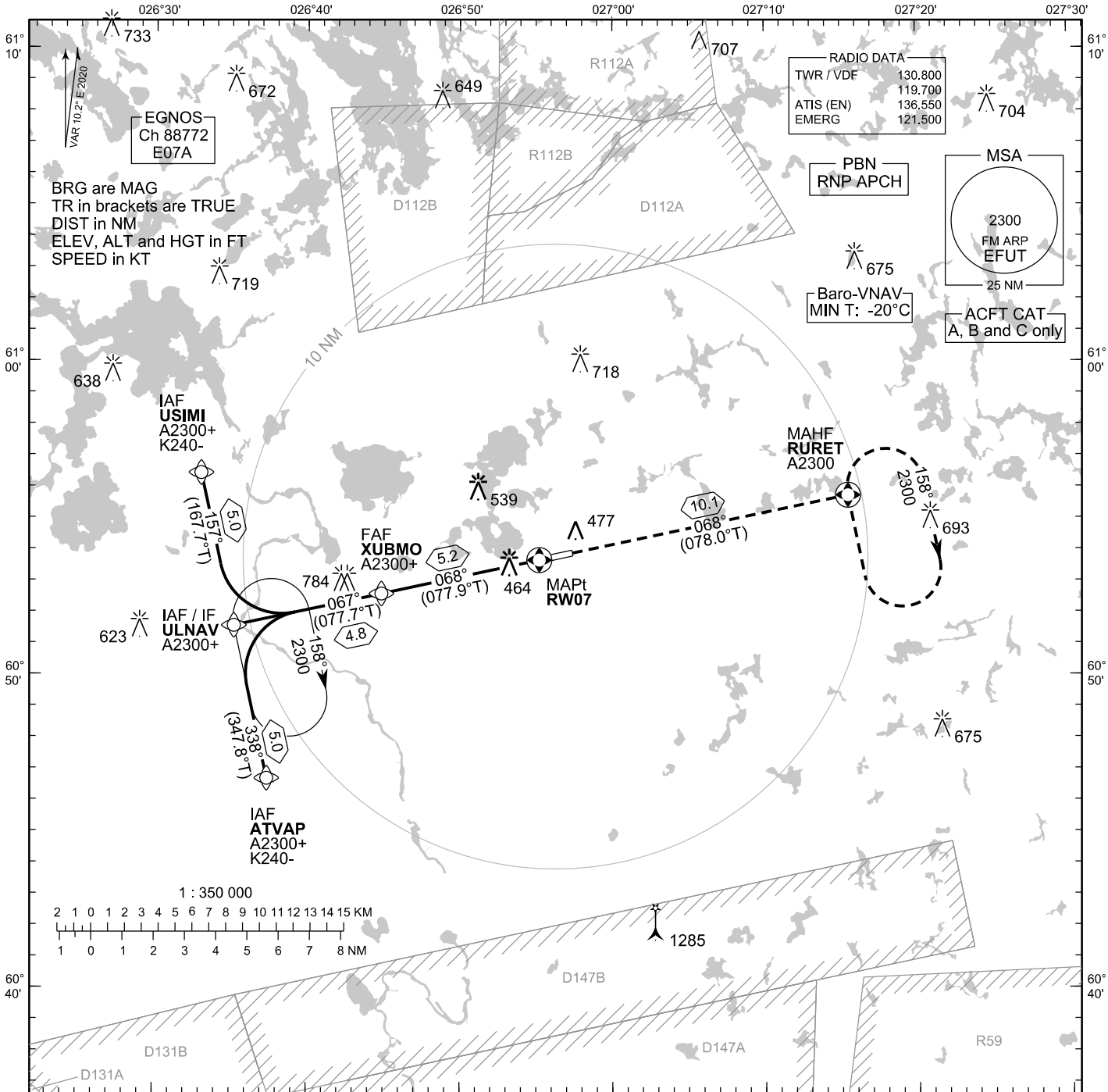


**INSTRUMENT APPROACH CHART - ICAO**

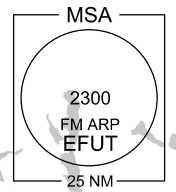
ELEV 340 FT  
HEIGHTS RELATED TO  
THR RWY 07 ELEV 329 FT

RNP RWY 07  
UTTI AERODROME  
UTTI, FINLAND



**RADIO DATA**

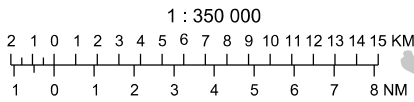
TWR / VDF	130.800
ATIS (EN)	119.700
EMERG	136.550
	121.500



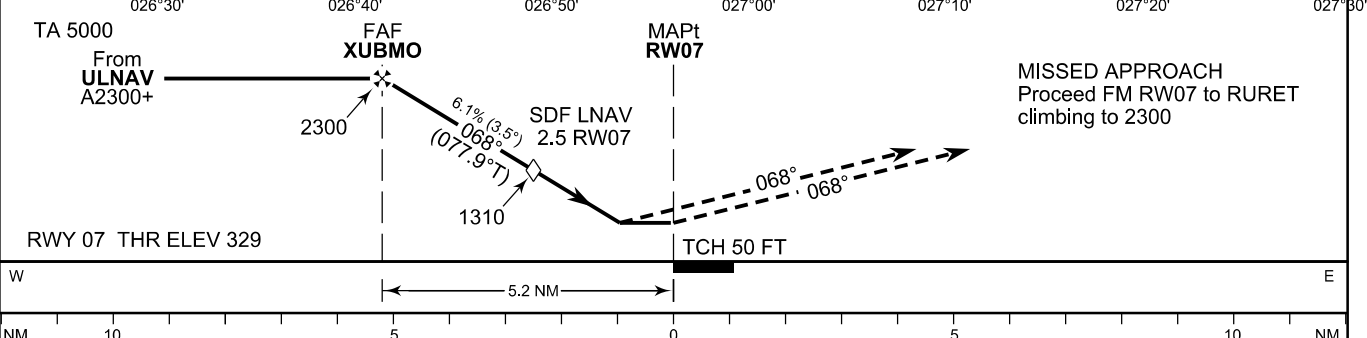
**PBN**  
RNP-APCH

**ACFT CAT**  
A, B and C only

BRG are MAG  
TR in brackets are TRUE  
DIST in NM  
ELEV, ALT and HGT in FT  
SPEED in KT



CHG: D areas



OCA (H)	A	B	C
LPV	569 (240)	584 (255)	596 (267)
LNAV/VNAV	601 (272)	616 (287)	628 (299)
LNAV	710 (390)		
Circling	780 (440)	840 (500)	940 (600)

DIST FM THR	5.0 NM	4.0 NM	3.0 NM	2.0 NM	1.0 NM	
Altitude (Height)	2240 (1910)	1870 (1540)	1490 (1160)	1120 (790)	750 (420)	
	kt	90	100	120	140	160
FAF - MAPt 5.2 NM	min:sec	3:27	3:06	2:35	2:13	1:56
Rate of descent	ft/min	560	620	740	870	990

Timing not authorized for defining the MAPt

EFUT RNP RWY 07										
PROC ID NAV SPEC	SEQ NR	P/T	WPT			MAG	GEO TR	DIST NM	Constraints	
			ID	Type	Flyover				LVL	Speed
H07 USIMI RNP APCH	005	IF	USIMI	IAF	-				A2300+	K240-
	010	TF	ULNAV	IF	-	157°	167.7°T	5.0	A2300+	
	020	TF	XUBMO	FAF	-	067°	077.7°T	4.8	A2300+	
	030	TF	RW07	MAPt	Y	068°	077.9°T	5.2		
	040	TF	RURET	MAHF	Y	068°	078.0°T	10.1	A2300	

EFUT RNP RWY 07										
PROC ID NAV SPEC	SEQ NR	P/T	WPT			MAG	GEO TR	DIST NM	Constraints	
			ID	Type	Flyover				LVL	Speed
H07 ULNAV RNP APCH	010	IF	ULNAV	IAF/IF	-				A2300+	
	020	TF	XUBMO	FAF	-	067°	077.7°T	4.8	A2300+	
	030	TF	RW07	MAPt	Y	068°	077.9°T	5.2		
	040	TF	RURET	MAHF	Y	068°	078.0°T	10.1	A2300	

EFUT RNP RWY 07										
PROC ID NAV SPEC	SEQ NR	P/T	WPT			MAG	GEO TR	DIST NM	Constraints	
			ID	Type	Flyover				LVL	Speed
H07 ATVAP RNP APCH	005	IF	ATVAP	IAF	-				A2300+	K240-
	010	TF	ULNAV	IF	-	338°	347.8°T	5.0	A2300+	
	020	TF	XUBMO	FAF	-	067°	077.7°T	4.8	A2300+	
	030	TF	RW07	MAPt	Y	068°	077.9°T	5.2		
	040	TF	RURET	MAHF	Y	068°	078.0°T	10.1	A2300	

RNAV Holdings							
ID	INBD TR	INBD MAG	Turn Direction	Speed	MNM HLDG LVL	TIME	DIST NM
ULNAV	347.8°T	338°	Right	K230-	A2300	1 MIN	-
RURET	348.4°T	338°	Right	K230-	A2300	1 MIN	-

WPT COORD
SEE PAGE EFUT AD 2.15 - 1

FINAL APPROACH PARAMETERS			
LNAV Gradient	Baro-VNAV		TCH
	VPA	MNM T	
6.12 % (3.50°)	3.50°	-20°C	50 FT

SBAS DATA	
Approach ID	E07A
Service Provider	EGNOS
CRC remainder	DF A5 42 C7
Channel number	88772
Data Block	SEE EFUT AD 2.15 - 9