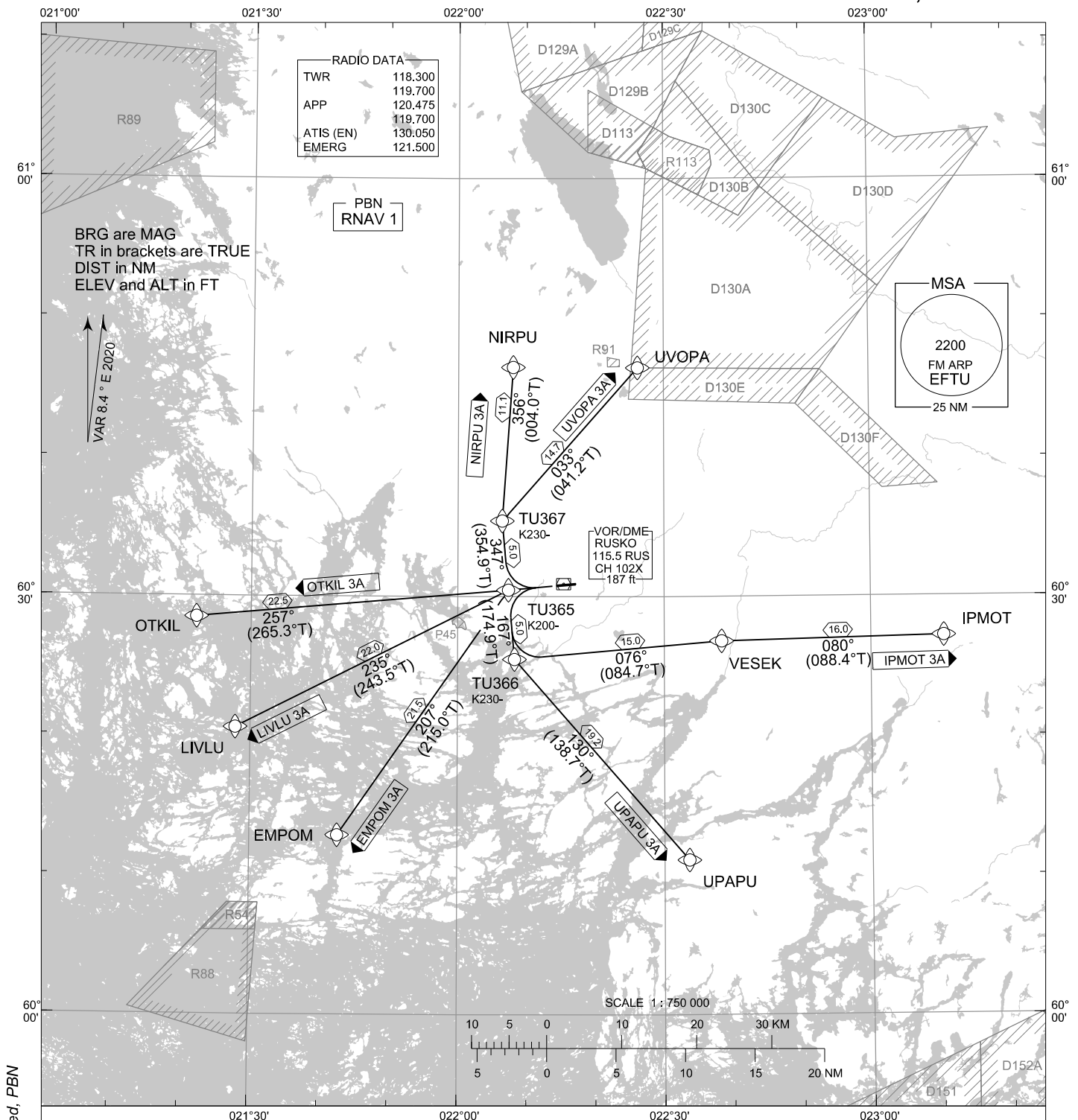


STANDARD DEPARTURE CHART  
INSTRUMENT (SID) - ICAO

TRANSITION ALT  
5000

RNAV<sup>(GNSS)</sup> SID RWY 26  
TURKU AERODROME  
TURKU, FINLAND



CHG: MAG VAR, Speed, PBN

**RNAV SID RWY 26**

EMPOM 3A IPMOT 3A LIVLU 3A NIRPU 3A OTKIL 3A UPAPU 3A UVOPA 3A

- DME/DME OPS: NOT SUPPORTED
- ROUTES: RNAV PROC CODING ON THE VERSO OF THE CHART
- SQUAWK: WHEN LINING UP SQUAWK THE ASSIGNED CODE
- INITIAL CLIMB: MNM TURNING ALT ACCORDING TO RTE CODING
- NOISE ABATEMENT: AFTER TAKE-OFF CLIMB AS RAPIDLY AS POSSIBLE TO AT LEAST 2000 FT ABOVE AD ELEV  
PUBLISHED SID ROUTES ARE ALSO MINIMUM NOISE ROUTINGS
- AREA MNM ALT: SEE AMA INDEX, AIP ENR 6.1 - 3

EFTU RNAV SID RWY 26										
RTE NAV SPEC	SEQ NR	P/T	WPT		MAG	GEO TR	DIST NM	Turn Direction	Constraints	
			ID	Flyover					LVL	Speed
EMPOM 3A RNAV 1	010	CA	-	-	257°	265.4°T	-		A550+	
	020	DF	TU365	-	-	-	-			K200-
	030	TF	EMPOM	-	207°	215.0°T	21.5			
IPMOT 3A RNAV 1	010	CA	-	-	257°	265.4°T	-		A550+	
	020	DF	TU365	-	-	-	-			K200-
	030	TF	TU366	-	167°	174.9°T	5.0	L		K230-
	040	TF	VESEK	-	076°	084.7°T	15.0			
	050	TF	IPMOT	-	080°	088.4°T	16.0			
LIVLU 3A RNAV 1	010	CA	-	-	257°	265.4°T	-		A550+	
	020	DF	TU365	-	-	-	-			K200-
	030	TF	LIVLU	-	235°	243.5°T	22.0			
NIRPU 3A RNAV 1	010	CA	-	-	257°	265.4°T	-		A550+	
	020	DF	TU365	-	-	-	-			K200-
	030	TF	TU367	-	347°	354.9°T	5.0			K230-
	040	TF	NIRPU	-	356°	004.0°T	11.1			
OTKIL 3A RNAV 1	010	CA	-	-	257°	265.4°T	-		A550+	
	020	DF	TU365	-	-	-	-			K200-
	030	TF	OTKIL	-	257°	265.3°T	22.5			
UPAPU 3A RNAV 1	010	CA	-	-	257°	265.4°T	-		A550+	
	020	DF	TU365	-	-	-	-			K200-
	030	TF	TU366	-	167°	174.9°T	5.0	L		K230-
	040	TF	UPAPU	-	130°	138.7°T	19.2			
UVOPA 3A RNAV 1	010	CA	-	-	257°	265.4°T	-		A550+	
	020	DF	TU365	-	-	-	-			K200-
	030	TF	TU367	-	347°	354.9°T	5.0	R		K230-
	040	TF	UVOPA	-	033°	041.2°T	14.7			

**WPT COORD**

SEE PAGE EFTU AD 2.15 - 1