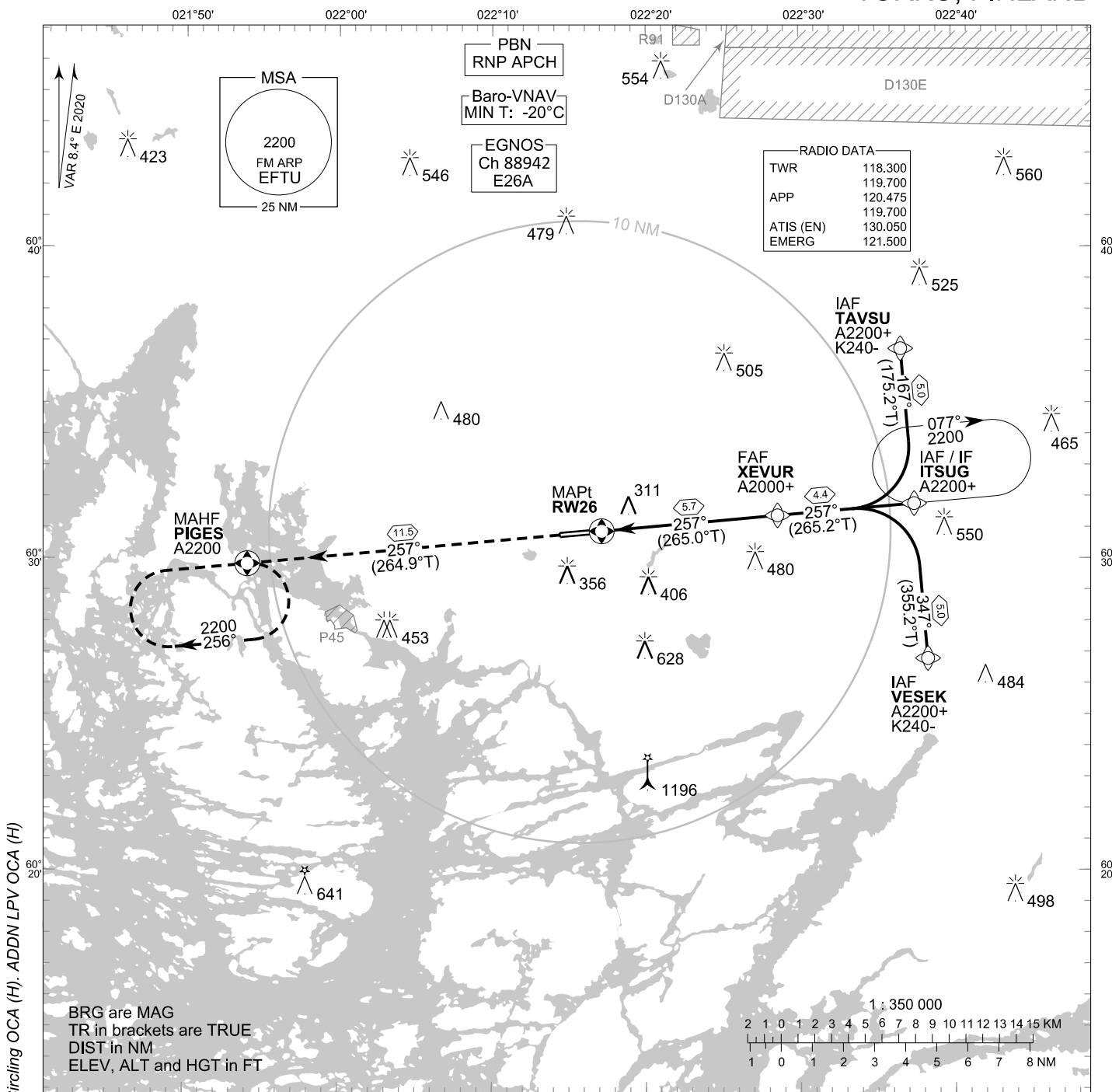


**INSTRUMENT  
APPROACH CHART - ICAO**

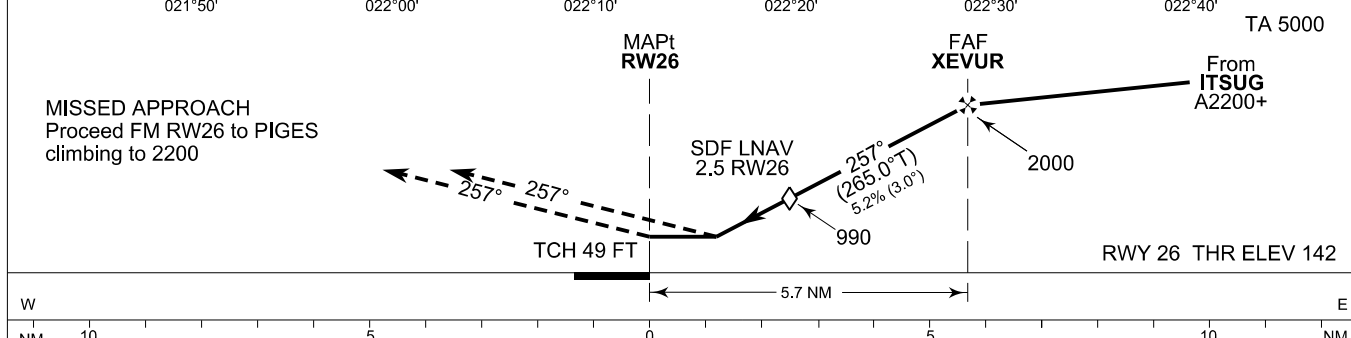
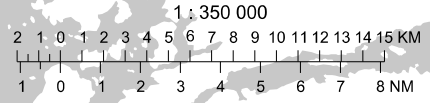
ELEV 162 FT  
HEIGHTS RELATED TO  
THR RWY 26 ELEV 142 FT

**RNP RWY 26  
TURKU AERODROME  
TURKU, FINLAND**



CHG: MAG VAR, LNAV/VNAV, Circling OCA (H), ADDN LPV OCA (H)

BRG are MAG  
TR in brackets are TRUE  
DIST in NM  
ELEV, ALT and HGT in FT



OCA (H)	A	B	C	D
LPV	388 (247)	400 (259)	408 (267)	419 (278)
LNAV/VNAV	420 (279)	432 (291)	440 (299)	451 (310)
LNAV	560 (420)			
Circling	660 (490)	710 (540)	800 (640)	1030 (860)

NOTE: CIRCLING NORTH OF AD ONLY

DIST FM THR	2.0 NM	3.0 NM	4.0 NM	5.0 NM		
Altitude (Height)	830 (690)	1150 (1000)	1460 (1320)	1780 (1640)		
FAF - MAPt 5.7 NM	kt	90	100	120	140	160
	min:sec	3:47	3:25	2:50	2:26	2:08
Rate of descent	ft/min	480	530	640	740	850

Timing not authorized for defining the MAPt

EFTU RNP RWY 26										
PROC ID NAV SPEC	SEQ NR	P/T	WPT			MAG GEO TR	DIST NM	Turn Direction	Constraints	
			ID	Type	Flyover				LVL	Speed
H26 VESEK RNP APCH	005	IF	VESEK	IAF	-	347°	5.0	L	A2200+	K240-
	010	TF	ITSUG	IF	-	355.2°T 257°			A2200+	
	020	TF	XEVUR	FAF	-	265.2°T 257°	4.4	A2000+		
	030	TF	RW26	MAPt	Y	265.0°T 257°	5.7			
	040	TF	PIGES	MAHF	Y	264.9°T	11.5		A2200	

EFTU RNP RWY 26										
PROC ID NAV SPEC	SEQ NR	P/T	WPT			MAG GEO TR	DIST NM	Turn Direction	Constraints	
			ID	Type	Flyover				LVL	Speed
H26 ITSUG RNP APCH	010	IF	ITSUG	IAF/IF	-	257°	4.4		A2200+	
	020	TF	XEVUR	FAF	-	265.2°T 257°			A2000+	
	030	TF	RW26	MAPt	Y	265.0°T 257°	5.7			
	040	TF	PIGES	MAHF	Y	264.9°T	11.5		A2200	

EFTU RNP RWY 26										
PROC ID NAV SPEC	SEQ NR	P/T	WPT			MAG GEO TR	DIST NM	Turn Direction	Constraints	
			ID	Type	Flyover				LVL	Speed
H26 TAVSU RNP APCH	005	IF	TAVSU	IAF	-	167°	5.0	R	A2200+	K240-
	010	TF	ITSUG	IF	-	175.2°T 257°			A2200+	
	020	TF	XEVUR	FAF	-	265.2°T 257°	4.4	A2000+		
	030	TF	RW26	MAPt	Y	265.0°T 257°	5.7			
	040	TF	PIGES	MAHF	Y	264.9°T	11.5		A2200	

RNAV Holdings							
ID	INBD TR	INBD MAG	Turn Direction	MAX IAS	MNM HLDG LVL	TIME	DIST NM
ITSUG	264.9°T	257°	Right	230 KT	A2200	1 MIN	-
PIGES	084.8°T	076°	Right	230 KT	A2200	1 MIN	-

WPT COORD
SEE PAGE EFTU AD 2.15 - 1

FINAL APPROACH PARAMETERS			
LNAV Gradient	Baro-VNAV		TCH
	VPA	MNM T	
5.24 % (3.00°)	3.00°	-20°C	49 FT

SBAS DATA	
Approach ID	E26A
Service Provider	EGNOS
CRC remainder	79 4A 13 63
Channel number	88942
Data Block	SEE EFTU AD 2.15 - 9