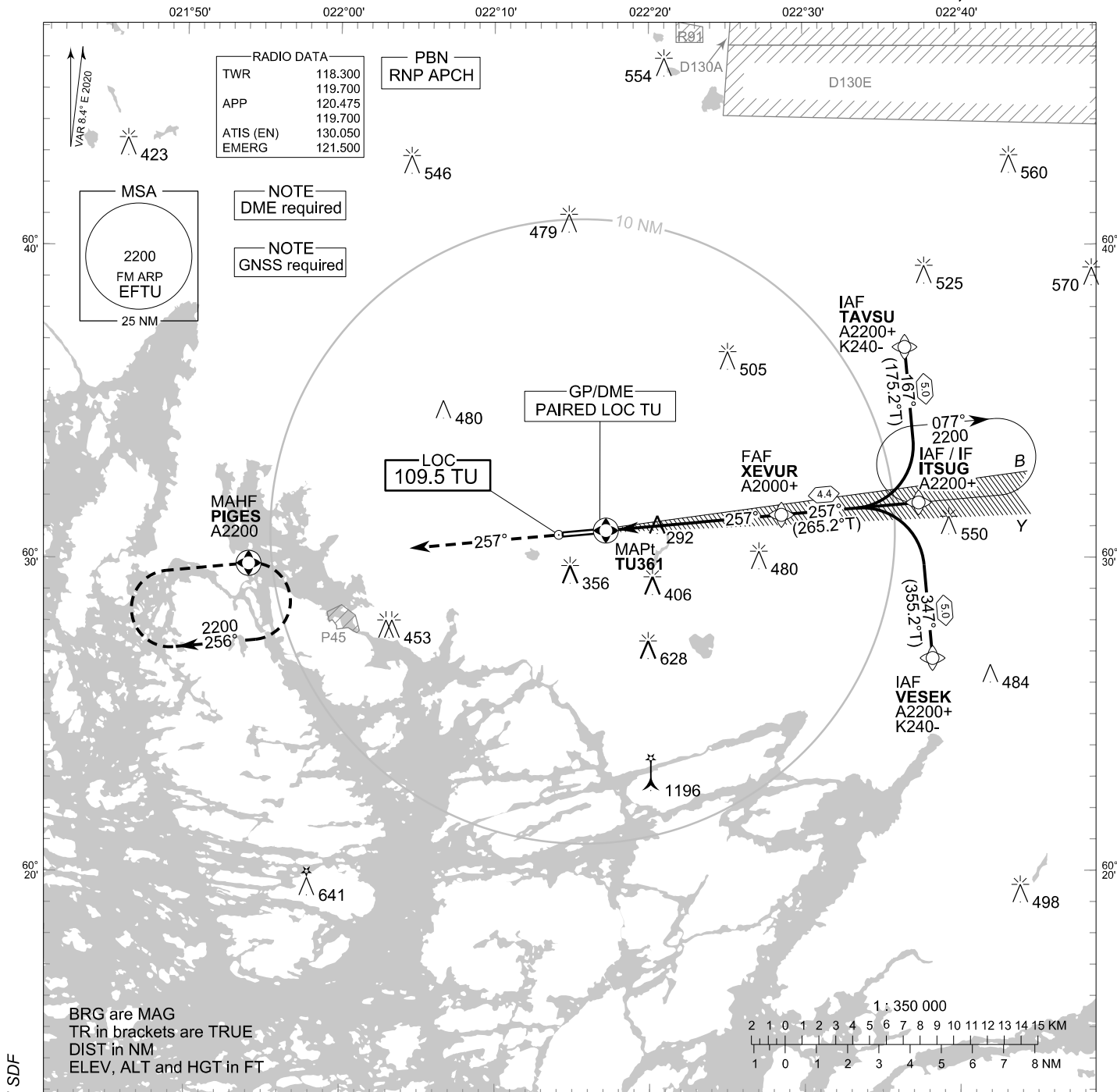


**INSTRUMENT
APPROACH CHART - ICAO**

ELEV 162 FT
HEIGHTS RELATED TO
THR RWY 26 ELEV 142 FT

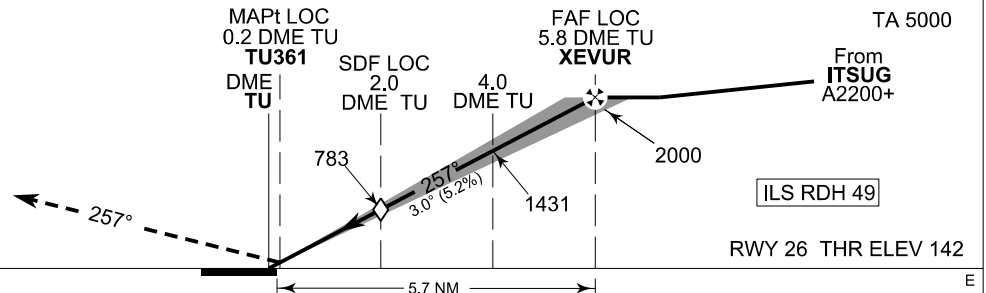
**ILS Z or LOC Z RWY 26
TURKU AERODROME
TURKU, FINLAND**



CHG: MAG VAR, OCA(H), ADDN SDF

BRG are MAG
 TR in brackets are TRUE
 DIST in NM
 ELEV, ALT and HGT in FT

MISSED APPROACH
 Straight ahead to PIGES
 climbing to 2200



	OCA (H)			
	A	B	C	D
ILS CAT I	300 (159)	310 (169)	322 (181)	335 (194)
LOC	540 (400)			
LOC WO SDF	780 (640)			
Circling	660 (490)	710 (540)	800 (640)	1030 (860)

NOTE: CIRCLING NORTH OF AD ONLY

	kt	90	100	120	140	160
FAF - MAPt 5.6 NM	min:sec	3:44	3:22	2:48	2:24	2:06
Rate of descent	ft/min	480	530	640	740	850

Timing not authorized for defining the MAPt

EFTU ILS Z or LOC Z RWY 26										
PROC ID NAV SPEC	SEQ NR	P/T	WPT			MAG GEO TR	DIST NM	Turn Direction	Constraints	
			ID	Type	Flyover				LVL	Speed
I26 VESEK RNP APCH	005	IF	VESEK	IAF	-	347°	5.0	L	A2200+	K240-
	010	TF	ITSUG	IF	-	355.2°T			A2200+	
	020	TF	XEVUR	FAF LOC	-	257° 265.2°T	4.4		A2000+	
	030	TF	TU361	MAPt LOC	Y	257° 265.4°T	-			
	040	CA	-	-	-	-	-		A600+	
	050	DF	PIGES	MAHF	Y	-	-		A2200	

EFTU ILS Z or LOC Z RWY 26										
PROC ID NAV SPEC	SEQ NR	P/T	WPT			MAG GEO TR	DIST NM	Turn Direction	Constraints	
			ID	Type	Flyover				LVL	Speed
I26 ITSUG RNP APCH	010	IF	ITSUG	IAF/IF	-	257°	4.4		A2200+	
	020	TF	XEVUR	FAF LOC	-	265.2°T			A2000+	
	030	TF	TU361	MAPt LOC	Y	257° 265.4°T	-			
	040	CA	-	-	-	-	-		A600+	
	050	DF	PIGES	MAHF	Y	-	-		A2200	

EFTU ILS Z or LOC Z RWY 26										
PROC ID NAV SPEC	SEQ NR	P/T	WPT			MAG GEO TR	DIST NM	Turn Direction	Constraints	
			ID	Type	Flyover				LVL	Speed
I26 TAVSU RNP APCH	005	IF	TAVSU	IAF	-	167°	5.0	R	A2200+	K240-
	010	TF	ITSUG	IF	-	175.2°T			A2200+	
	020	TF	XEVUR	FAF LOC	-	257° 265.2°T	4.4		A2000+	
	030	TF	TU361	MAPt LOC	Y	257° 265.4°T	-			
	040	CA	-	-	-	-	-		A600+	
	050	DF	PIGES	MAHF	Y	-	-		A2200	

RNAV Holdings							
ID	INBD TR	INBD MAG	Turn Direction	MAX IAS	MNM HLDG LVL	TIME	DIST NM
ITSUG	264.9°T	257°	Right	230 KT	A2200	1 MIN	-
PIGES	084.8°T	076°	Right	230 KT	A2200	1 MIN	-

WPT COORD
SEE PAGE EFTU AD 2.15 - 1

FINAL APPROACH PARAMETERS			
LOC Gradient	ILS		RDH
	CAT	GPA	
5.24 % (3.00°)	I	3.00°	49 FT