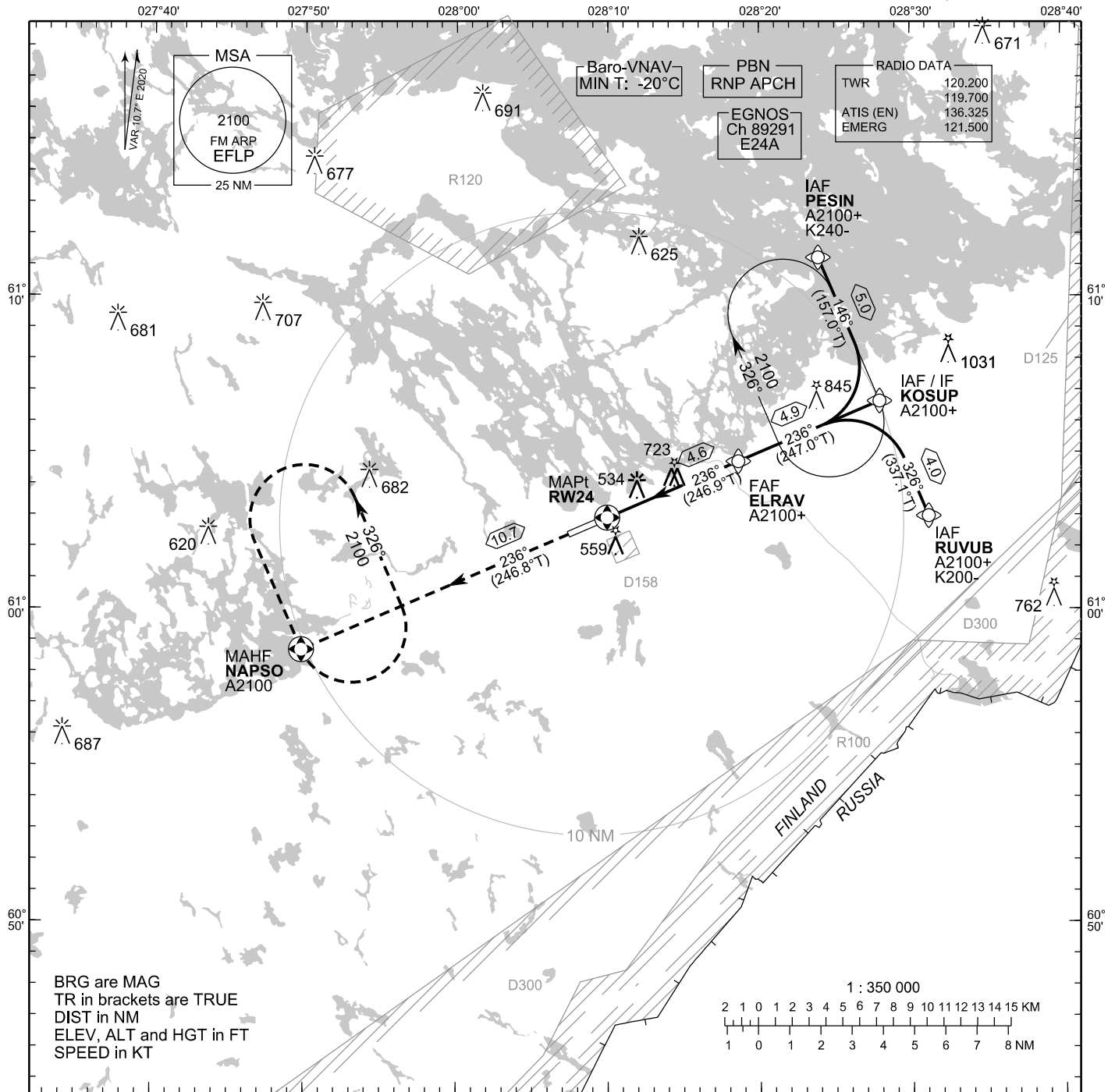


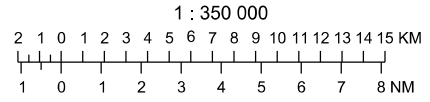
**INSTRUMENT  
APPROACH CHART - ICAO**

ELEV 349 FT  
HEIGHTS RELATED TO  
THR RWY 24 ELEV 349 FT

**RNP RWY 24  
LAPPEENRANTA AERODROME  
LAPPEENRANTA, FINLAND**

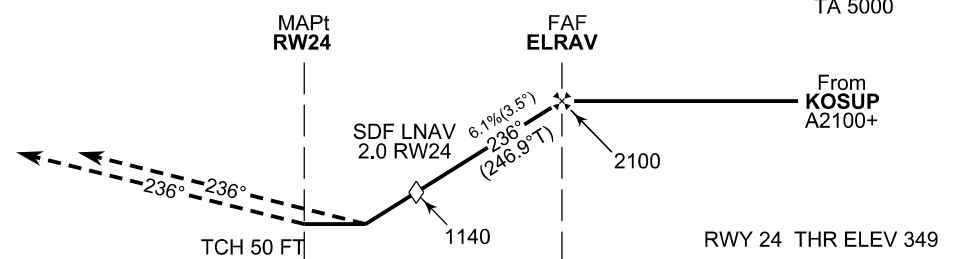


BRG are MAG  
TR in brackets are TRUE  
DIST in NM  
ELEV, ALT and HGT in FT  
SPEED in KT



CHG: ADDN D300. DEL D200

**MISSED APPROACH**  
Proceed FM RW24 to NAPSO  
climbing to 2100



W ← 4.6 NM → E

OCA (H)	A	B	C	D
LPV	597 (248)	613 (264)	624 (275)	634 (285)
LNAV/VNAV	670 (321)	685 (336)	697 (348)	707 (358)
LNAV	780 (440)			
Circling	860 (510)	1020 (670)	1120 (770)	1120 (770)

DIST FM THR	2.0 NM		3.0 NM		4.0 NM	
Altitude (Height)	1140 (790)		1510 (1170)		1890 (1540)	
	kt	90	100	120	140	160
FAF - MAPt 4.6 NM	min:sec	3:03	2:45	2:17	1:58	1:43
Rate of descent	ft/mIn	560	620	740	870	990

Timing not authorized for defining the MAPt

EFLP RNP RWY 24										
PROC ID NAV SPEC	SEQ NR	P/T	WPT			MAG	GEO TR	DIST NM	Constraints	
			ID	Type	Flyover				LVL	Speed
H24 RUVUB RNP APCH	005	IF	RUVUB	IAF	-	326°	337.1°T	4.0	A2100+	K200-
	010	TF	KOSUP	IF	-				A2100+	
	020	TF	ELRAV	FAF	-	236°	247.0°T	4.9	A2100+	
	030	TF	RW24	MAPt	Y	236°	246.9°T	4.6		
	040	TF	NAPSO	MAHF	Y	236°	246.8°T	10.7	A2100	

EFLP RNP RWY 24										
PROC ID NAV SPEC	SEQ NR	P/T	WPT			MAG	GEO TR	DIST NM	Constraints	
			ID	Type	Flyover				LVL	Speed
H24 KOSUP RNP APCH	010	IF	KOSUP	IAF/IF	-	236°	247.0°T	4.9	A2100+	
	020	TF	ELRAV	FAF	-				A2100+	
	030	TF	RW24	MAPt	Y	236°	246.9°T	4.6		
	040	TF	NAPSO	MAHF	Y	236°	246.8°T	10.7	A2100	

EFLP RNP RWY 24										
PROC ID NAV SPEC	SEQ NR	P/T	WPT			MAG	GEO TR	DIST NM	Constraints	
			ID	Type	Flyover				LVL	Speed
H24 PESIN RNP APCH	005	IF	PESIN	IAF	-	146°	157.0°T	5.0	A2100+	K240-
	010	TF	KOSUP	IF	-				A2100+	
	020	TF	ELRAV	FAF	-	236°	247.0°T	4.9	A2100+	
	030	TF	RW24	MAPt	Y	236°	246.9°T	4.6		
	040	TF	NAPSO	MAHF	Y	236°	246.8°T	10.7	A2100	

RNAV Holdings							
ID	INBD TR	INBD MAG	Turn Direction	Speed	MNM HLDG LVL	TIME	DIST NM
KOSUP	157.0°T	146°	Right	K230-	A2100	1 MIN	-
NAPSO	156.4°T	146°	Left	K230-	A2100	1 MIN	-

WPT COORD
SEE PAGE EFLP AD 2.15 - 1

FINAL APPROACH PARAMETERS			
LNAV Gradient	Baro-VNAV		TCH
	VPA	MNM T	
6.12 % (3.50°)	3.50°	-20°C	50 FT

SBAS DATA	
Approach ID	E24A
Service Provider	EGNOS
CRC remainder	E9 19 A0 5C
Channel number	89291
Data Block	SEE EFLP AD 2.15 - 9