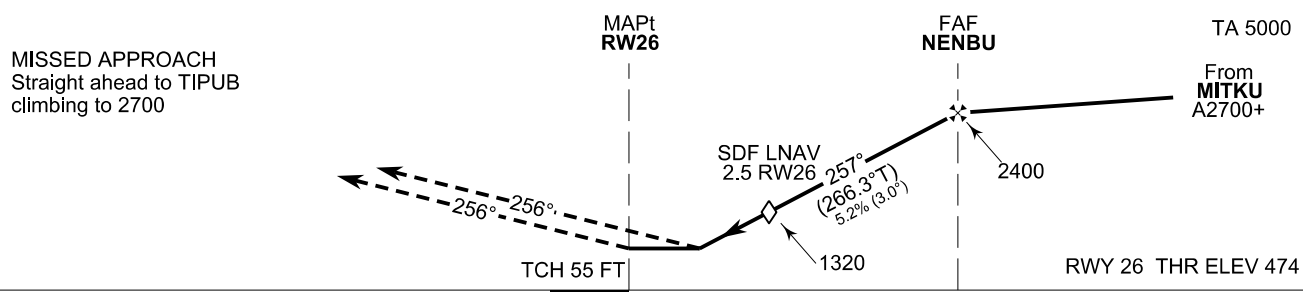
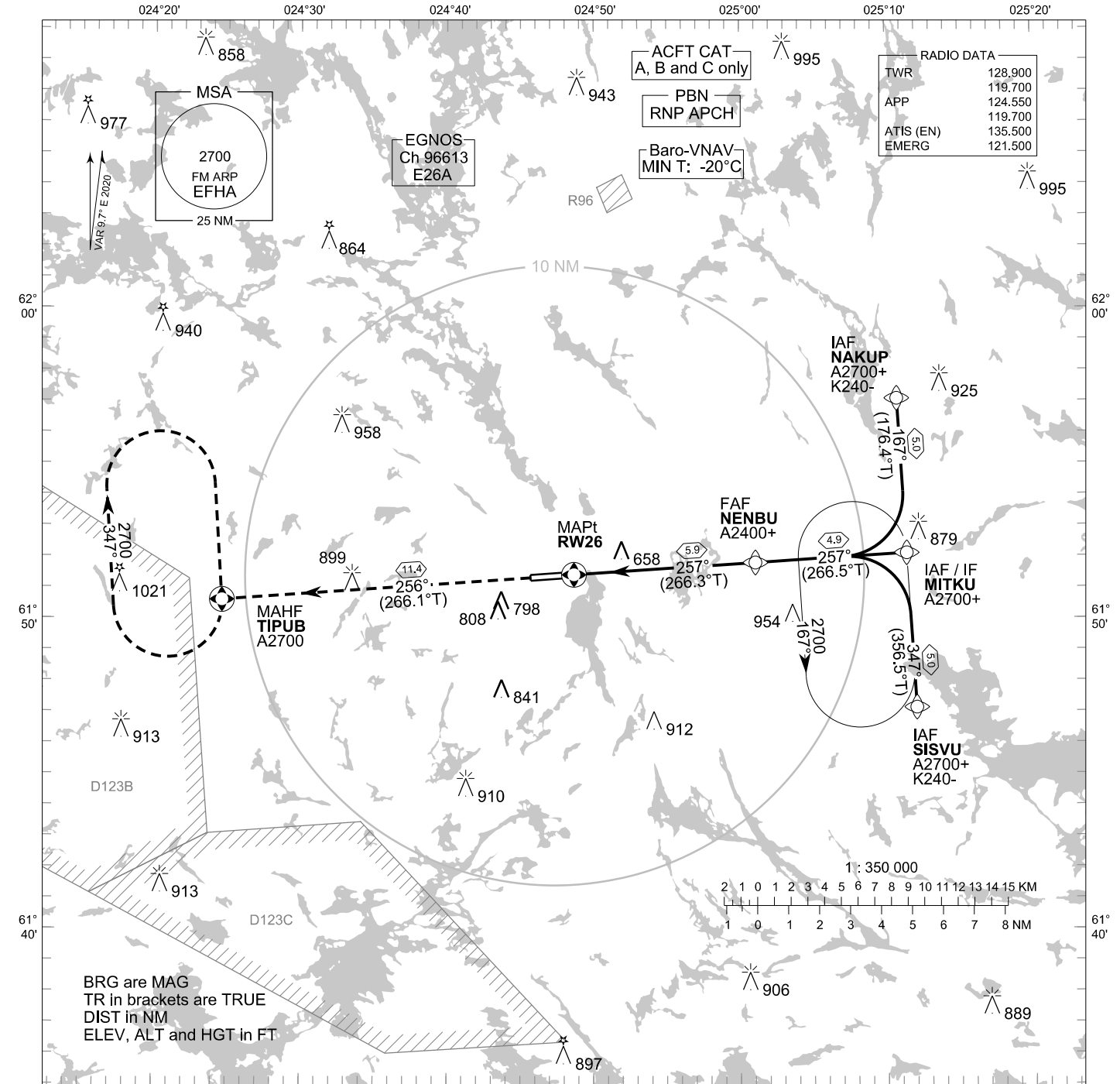


**INSTRUMENT
APPROACH CHART - ICAO**

ELEV 481 FT
HEIGHTS RELATED TO
THR RWY 26 ELEV 474 FT

**RNP RWY 26
HALLI AERODROME
HALLI, FINLAND**



CHG: OCA (H), ADDN LPV

NM	OCA (H)			DIST FM THR						
	A	B	C	2.0 NM	3.0 NM	4.0 NM	5.0 NM			
10	712 (239)	724 (251)	732 (259)	1170 (690)	1480 (1010)	1800 (1330)	2120 (1650)			
5	768 (295)	781 (308)	789 (316)	kt	90	100	120	140		
0	910 (440)			FAF - MAPt 5.9 NM	min:sec	3:55	3:32	2:56	2:31	2:12
	1100 (620)	1110 (630)	1240 (760)	Rate of descent	ft/min	480	530	640	740	850

Timing not authorized for defining the MAPt

EFHA RNP RWY 26										
PROC ID NAV SPEC	SEQ NR	P/T	WPT			MAG GEO TR	DIST NM	Turn Direction	Constraints	
			ID	Type	Flyover				LVL	Speed
H26 SISVU RNP APCH	005	IF	SISVU	IAF	-	347°	5.0	L	A2700+	K240-
	010	TF	MITKU	IF	-	356.5°T 257°			A2700+	
	020	TF	NENBU	FAF	-	266.5°T 257°	4.9	A2400+		
	030	TF	RW26	MAPt	Y	266.3°T 256°	5.9			
	040	TF	TIPUB	MAHF	Y	266.1°T	11.4		A2700	

EFHA RNP RWY 26										
PROC ID NAV SPEC	SEQ NR	P/T	WPT			MAG GEO TR	DIST NM	Turn Direction	Constraints	
			ID	Type	Flyover				LVL	Speed
H26 MITKU RNP APCH	010	IF	MITKU	IAF/IF	-	257°	4.9		A2700+	
	020	TF	NENBU	FAF	-	266.5°T 257°			A2400+	
	030	TF	RW26	MAPt	Y	266.3°T 256°	5.9			
	040	TF	TIPUB	MAHF	Y	266.1°T	11.4		A2700	

EFHA RNP RWY 26										
PROC ID NAV SPEC	SEQ NR	P/T	WPT			MAG GEO TR	DIST NM	Turn Direction	Constraints	
			ID	Type	Flyover				LVL	Speed
H26 NAKUP RNP APCH	005	IF	NAKUP	IAF	-	167°	5.0	R	A2700+	K240-
	010	TF	MITKU	IF	-	176.4°T 257°			A2700+	
	020	TF	NENBU	FAF	-	266.5°T 257°	4.9	A2400+		
	030	TF	RW26	MAPt	Y	266.3°T 256°	5.9			
	040	TF	TIPUB	MAHF	Y	266.1°T	11.4		A2700	

RNAV Holdings							
ID	INBD TR	INBD MAG	Turn Direction	Speed	MNM HLDG LVL	TIME	DIST NM
MITKU	356.5°T	347°	Left	K230-	A2700	1 MIN	-
TIPUB	176.4°T	167°	Right	K230-	A2700	1 MIN	-

WPT COORD
SEE PAGE EFHA AD 2.15 - 1

FINAL APPROACH PARAMETERS			
LNAV Gradient	Baro-VNAV		TCH
	VPA	MNM T	
5.24 % (3.00°)	3.00°	-20°C	55 FT

SBAS DATA	
Approach ID	E26A
Service Provider	EGNOS
CRC remainder	98 9C DC 41
Channel number	96613
Data Block	SEE EFHA AD 2.15 - 9