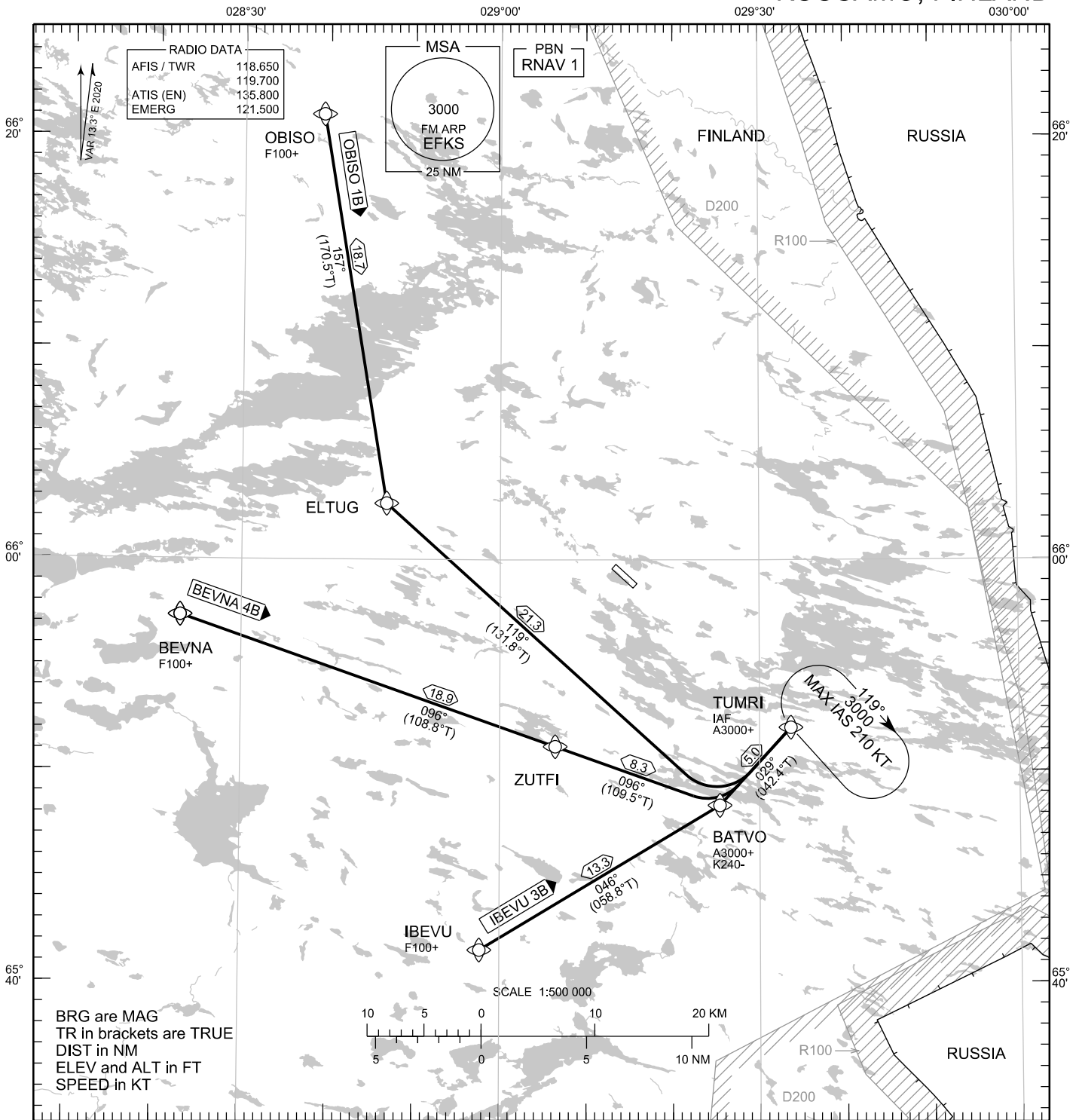


STANDARD ARRIVAL CHART
INSTRUMENT (STAR) - ICAO

TRANSITION ALT
5000

RNAV (GNSS) STAR RWY 30
KUUSAMO AERODROME
KUUSAMO, FINLAND



RNAV STAR RWY 30
BEVNA 4B IBEVU 3B OBISO 1B

- DME/DME OPS: NOT SUPPORTED
- AREA MNM ALT: SEE AMA INDEX, AIP ENR 6.1-3
- ROUTES: RNAV PROC CODING ON THE VERSO OF THE CHART
ATC WILL GIVE DESCENT CLEARANCES
- WPT CONSTRAINTS: ALT / FL / SPEED CONSTRAINTS MUST ALWAYS BE
FOLLOWED AS PUBLISHED UNLESS EXPLICITLY CANCELLED
BY ATC
- CD OPS: BY ATC CLR IF TFC PERMITS. PLAN CD PATH ACCORDING
TO STAR
- RCF: SELECT TRANSPONDER CODE 7600
- RNAV STAR HAS BEEN GIVEN AND ACKNOWLEDGED:
FOLLOW THE STAR TO THE RESPECTIVE RWY AND
EXECUTE IAP AND LAND

CHG: RTE BEVNA

EFKS RNAV STAR RWY 30										
RTE NAV SPEC	SEQ NR	P/T	WPT		MAG	GEO TR	DIST NM	Constraints		
			ID	Flyover				LVL	LVL	Speed
BEVNA 4B RNAV 1	010	IF	BEVNA	-	-	-	-	F100+		
	020	TF	ZUTFI	-	096°	108.8°T	18.9			
	030	TF	BATVO	-	096°	109.5°T	8.3	A3000+		K240-
	040	TF	TUMRI	-	029°	042.4°T	5.0	A3000+		

IBEVU 3B RNAV 1	010	IF	IBEVU	-	-	-	-	F100+		
	020	TF	BATVO	-	046°	058.8°T	13.3	A3000+		K240-
	030	TF	TUMRI	-	029°	042.4°T	5.0	A3000+		

OBISO 1B RNAV 1	010	IF	OBISO	-	-	-	-	F100+		
	020	TF	ELTUG	-	157°	170.5°T	18.7			
	030	TF	BATVO	-	119°	131.8°T	21.3	A3000+		K240-
	040	TF	TUMRI	-	029°	042.4°T	5.0	A3000+		

RNAV Holdings							
ID	INBD TR	INBD MAG	Turn Direction	Speed	MNM HLDG LVL	TIME	DIST NM
TUMRI	312.2°T	299°	Right	K210-	A3000	1 MIN	-

WPT COORD
SEE PAGE EFKS AD 2.15 - 1