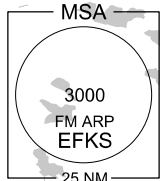
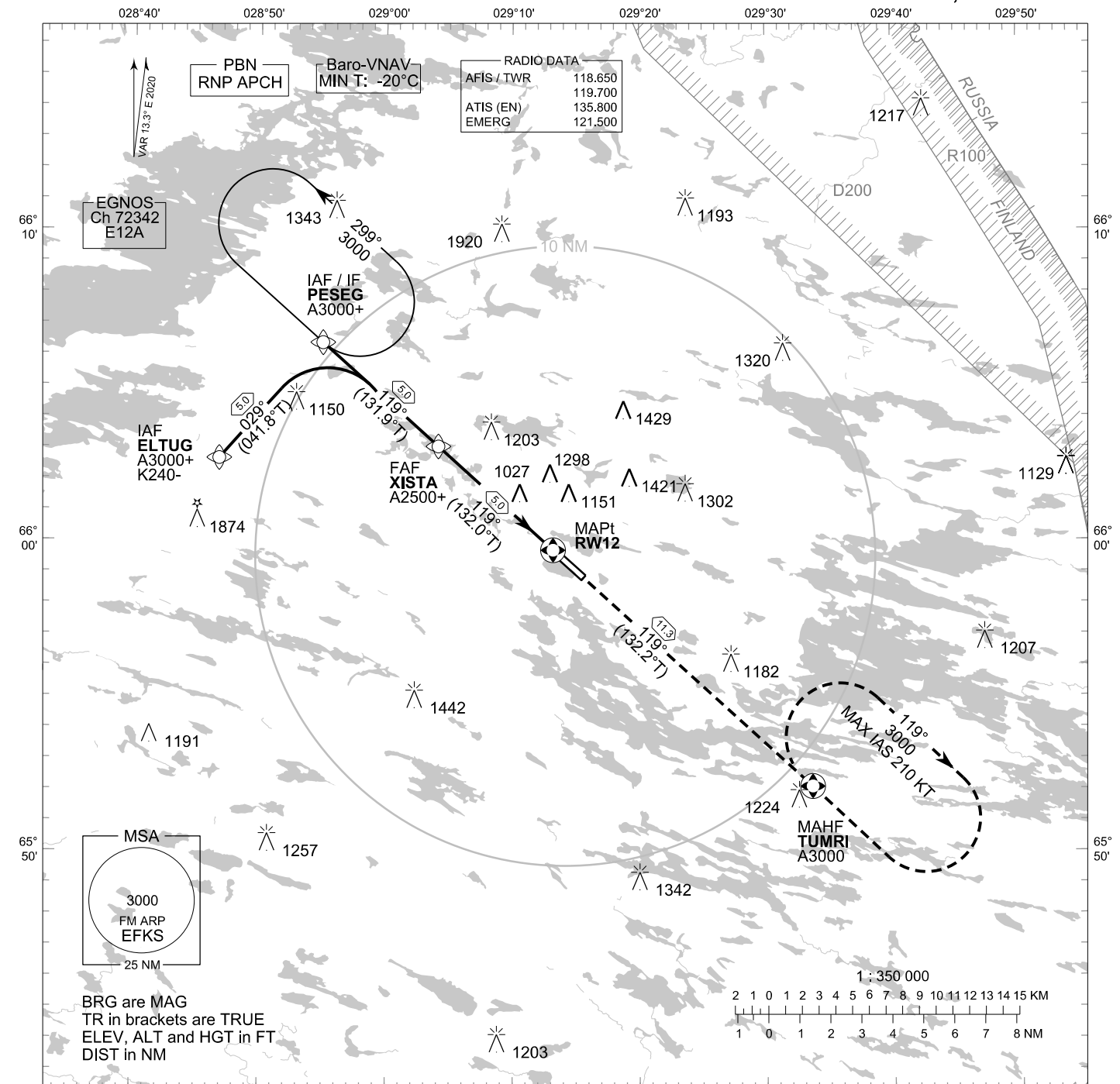


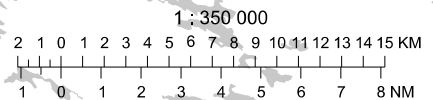
**INSTRUMENT
APPROACH CHART - ICAO**

ELEV 868 FT
HEIGHTS RELATED TO
DTHR RWY 12 ELEV 867 FT

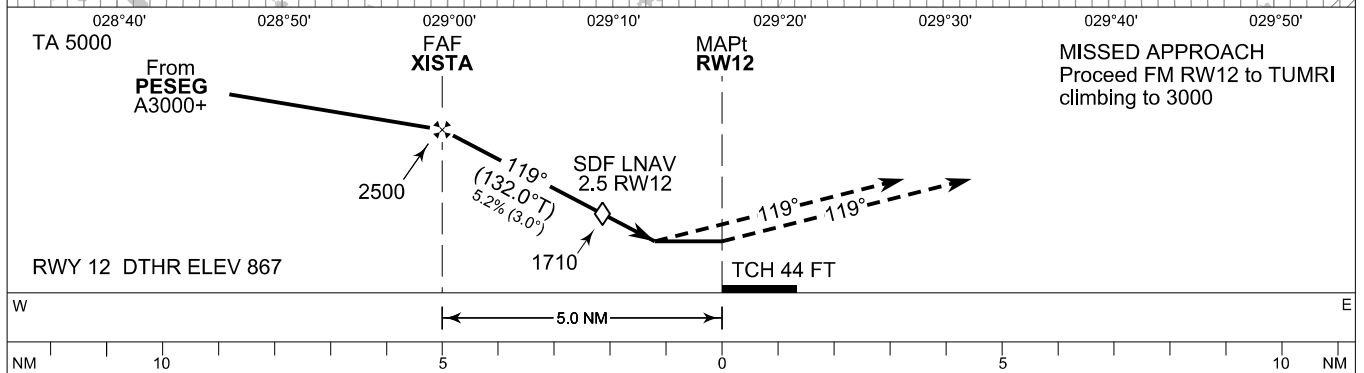
**RNP RWY 12
KUUSAMO AERODROME
KUUSAMO, FINLAND**



BRG are MAG
TR in brackets are TRUE
ELEV, ALT and HGT in FT
DIST in NM



CHG: REF ELEV. ADDN LPV



OCA (H)	A	B	C	D
LPV	1078 (211)	1090 (223)	1099 (232)	1109 (242)
LNAV/VNAV	1146 (279)	1159 (292)	1167 (300)	1177 (310)
LNAV	1280 (410)			
Circling	1450 (580)	1600 (730)	1820 (950)	1830 (960)

DIST FM THR	5.0 NM	4.0 NM	3.0 NM	2.0 NM		
Altitude (Height)	2500 (1640)	2180 (1320)	1870 (1000)	1550 (680)		
	kt	90	100	120	140	160
FAF - MAPt 5.0 NM	min:sec	3:20	3:00	2:30	2:08	1:52
Rate of descent	ft/min	480	530	640	740	850

Timing not authorized for defining the MAPt

EFKS RNP RWY 12										
PROC ID NAV SPEC	SEQ NR	P/T	WPT			MAG GEO TR	DIST NM	Turn Direction	Constraints	
			ID	Type	Flyover				LVL	Speed
H12 PESEG RNP APCH	010	IF	PESEG	IAF/IF	-	119°	5.0		A3000+	
	020	TF	XISTA	FAF	-	131.9°T			A2500+	
	030	TF	RW12	MAPt	Y	119°	5.0			
	040	TF	TUMRI	MAHF	Y	132.0°T	11.3		A3000	
					132.2°T					

EFKS RNP RWY 12										
PROC ID NAV SPEC	SEQ NR	P/T	WPT			MAG GEO TR	DIST NM	Turn Direction	Constraints	
			ID	Type	Flyover				LVL	Speed
H12 ELTUG RNP APCH	005	IF	ELTUG	IAF	-	029°	5.0	R	A3000+	K240-
	010	TF	PESEG	IF	-	041.8°T			A3000+	
	020	TF	XISTA	FAF	-	119°	5.0		A2500+	
	030	TF	RW12	MAPt	Y	119°	5.0			
	040	TF	TUMRI	MAHF	Y	132.0°T	11.3		A3000	
					132.2°T					

RNAV Holdings							
ID	INBD TR	INBD MAG	Turn Direction	Speed	MNM HLDG LVL	TIME	DIST NM
PESEG	132.2°T	119°	Left	K230-	A3000	1 MIN	-
TUMRI	312.2°T	299°	Right	K210-	A3000	1 MIN	-

WPT COORD
SEE PAGE EFKS AD 2.15 - 1

FINAL APPROACH PARAMETERS			
LNAV Gradient	Baro-VNAV		TCH
	VPA	MNM T	
5.24 % (3.00°)	3.00°	-20°C	44 FT

SBAS DATA	
Approach ID	E12A
Service Provider	EGNOS
CRC remainder	9E F2 69 FD
Channel number	72342
Data Block	SEE EFKS AD 2.15 - 9