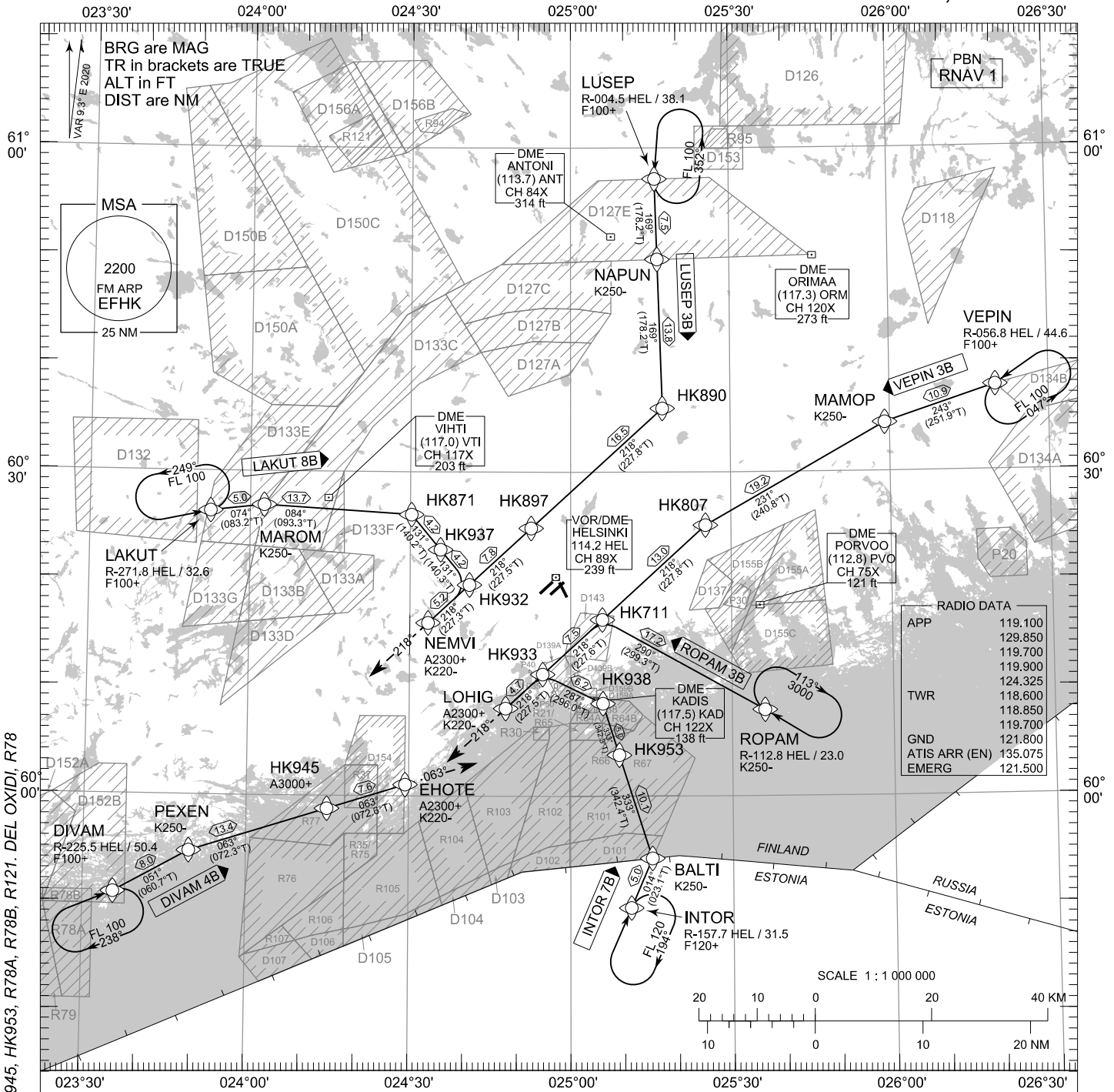


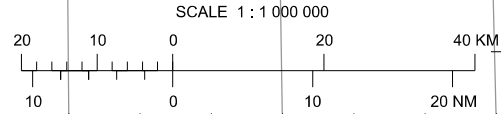
STANDARD ARRIVAL CHART
INSTRUMENT (STAR) - ICAO

TRANSITION ALT
5000

RNAV (DME/DME or GNSS) STAR RWY 04L 1/2
HELSINKI-VANTAA AERODROME
HELSINKI, FINLAND



| RADIO DATA | |
|---------------|---------|
| APP | 119.100 |
| | 129.850 |
| | 119.700 |
| | 119.900 |
| | 124.325 |
| TWR | 118.600 |
| | 118.850 |
| | 119.700 |
| GND | 121.800 |
| ATIS ARR (EN) | 135.075 |
| EMERG | 121.500 |



RNAV STAR RWY 04L 1/2
DIVAM 4B INTOR 7B LAKUT 8B LUSEP 3B ROPAM 3B VEPIN 3B

- DME/DME OPS:** MORE THAN 2 DME INPUTS CANNOT BE GUARANTEED AT ALL TIMES.
- AREA MNM ALT:** SEE AMA INDEX, AIP ENR 6.1 - 3
- ROUTES:** RNAV PROC CODING ON THE VERSO OF THE CHART.
UNLESS OTHERWISE INSTRUCTED, STAR MUST BE FLOWN ACCORDING TO THE DEFINED WAYPOINT SEQUENCE UNTIL THE LAST WAYPOINT AND THEN CONTINUE ON THE DEFINED COURSE. ATC CLEARANCE TO INBOUND IS ALWAYS REQUIRED.
ATC WILL GIVE DESCENT CLEARANCES.
- WPT CONSTRAINTS:** ALT / FL / SPEED CONSTRAINTS MUST ALWAYS BE FOLLOWED AS PUBLISHED UNLESS EXPLICITLY CANCELLED BY ATC.
- CD OPS:** BY ATC CLR IF TFC PERMITS. PLAN CD PATH ACCORDING TO STAR FOLLOWED BY DCT INTERCEPT TO IAF OF THE ACKNOWLEDGED IAP OR AS ADVISED BY ATC.

- RCF:** SELECT TRANSPONDER CODE 7600.
- RNAV STAR HAS BEEN GIVEN AND ACKNOWLEDGED:** FOLLOW THE STAR UNTIL THE LAST WAYPOINT AND PROCEED TO IAF. IF RADAR VECTORED, CONTINUE 2 MIN ON LAST ASSIGNED AND ACKNOWLEDGED HDG AND ALT/FL, THEN RESUME STAR UNTIL THE LAST WAYPOINT AND PROCEED TO IAF.
- RNAV STAR HAS NOT BEEN GIVEN AND ACKNOWLEDGED:** CONTINUE 2 MIN ON LAST ASSIGNED AND ACKNOWLEDGED HDG AND ALT/FL, THEN PROCEED TO IAF.
- FROM IAF EXECUTE IAP TO THE ACKNOWLEDGED RWY AND VACATE.**
- AIRCRAFT HAVING TELEPHONE, CALL +358 9 6151 3324.**

CHG: PBN, ADDN EHOETE, HK945, HK953, HK953, R78A, R78B, R78A, R78B, R121, DEL OXIDI, R78

| EFHK RNAV STAR RWY 04L 1/2 | | | | | | | | | | |
|----------------------------|--------|-----|-------|---------|------|---------|---------|-------------------|-------------|-------|
| RTE NAV SPEC | SEQ NR | P/T | WPT | | MAG | GEO TR | DIST NM | Turn Direction | Constraints | |
| | | | ID | Flyover | | | | | LVL | Speed |
| DIVAM 4B RNAV 1 | 010 | IF | DIVAM | - | - | - | - | | F100+ | |
| | 020 | TF | PEXEN | - | 051° | 060.7°T | 8.0 | | | K250- |
| | 030 | TF | HK945 | - | 063° | 072.3°T | 13.4 | | A3000+ | |
| | 040 | TF | EHOTE | - | 063° | 072.6°T | 7.6 | | A2300+ | K220- |
| | 050 | FM | EHOTE | - | 063° | 072.6°T | - | | A2300+ | K220- |
| INTOR 7B RNAV 1 | 010 | IF | INTOR | - | - | - | - | | F120+ | |
| | 020 | TF | BALTI | - | 014° | 023.1°T | 5.0 | L | | K250- |
| | 030 | TF | HK953 | - | 333° | 342.4°T | 10.1 | | | |
| | 040 | TF | HK938 | - | 333° | 342.3°T | 5.0 | L | | |
| | 050 | TF | HK933 | - | 287° | 296.0°T | 6.2 | L | | |
| | 060 | TF | LOHIG | - | 218° | 227.5°T | 4.7 | | A2300+ | K220- |
| LAKUT 8B RNAV 1 | 010 | IF | LAKUT | - | - | - | - | | F100+ | |
| | 020 | TF | MAROM | - | 074° | 083.2°T | 5.0 | | | K250- |
| | 030 | TF | HK871 | - | 084° | 093.3°T | 13.7 | R | | |
| | 040 | TF | HK937 | - | 131° | 140.2°T | 4.2 | | | |
| | 050 | TF | HK932 | - | 131° | 140.3°T | 4.2 | R | | |
| | 060 | TF | NEMVI | - | 218° | 227.3°T | 5.2 | | A2300+ | K220- |
| | 070 | FM | NEMVI | - | 218° | 227.3°T | - | | A2300+ | K220- |
| LUSEP 3B RNAV 1 | 010 | IF | LUSEP | - | - | - | - | | F100+ | |
| | 020 | TF | NAPUN | - | 169° | 178.2°T | 7.5 | | | K250- |
| | 030 | TF | HK890 | - | 169° | 178.2°T | 13.8 | R | | |
| | 040 | TF | HK897 | - | 218° | 227.8°T | 16.5 | | | |
| | 050 | TF | HK932 | - | 218° | 227.5°T | 7.8 | | | |
| | 060 | TF | NEMVI | - | 218° | 227.3°T | 5.2 | | A2300+ | K220- |
| | 070 | FM | NEMVI | - | 218° | 227.3°T | - | | A2300+ | K220- |
| ROPAM 3B RNAV 1 | 010 | IF | ROPAM | - | - | - | - | | | K250- |
| | 020 | TF | HK711 | - | 290° | 299.3°T | 17.2 | L | | |
| | 030 | TF | HK933 | - | 218° | 227.6°T | 7.5 | | | |
| | 040 | TF | LOHIG | - | 218° | 227.5°T | 4.7 | | A2300+ | K220- |
| | 050 | FM | LOHIG | - | 218° | 227.5°T | - | | A2300+ | K220- |
| VEPIN 3B RNAV 1 | 010 | IF | VEPIN | - | - | - | - | | F100+ | |
| | 020 | TF | MAMOP | - | 243° | 251.9°T | 10.9 | | | K250- |
| | 030 | TF | HK807 | - | 231° | 240.8°T | 19.2 | | | |
| | 040 | TF | HK711 | - | 218° | 227.8°T | 13.0 | | | |
| | 050 | TF | HK933 | - | 218° | 227.6°T | 7.5 | | | |
| | 060 | TF | LOHIG | - | 218° | 227.5°T | 4.7 | | A2300+ | K220- |
| | 070 | FM | LOHIG | - | 218° | 227.5°T | - | | A2300+ | K220- |

| RNAV Holdings | | | | | | | |
|---------------|---------|----------|----------------|---------|--------------|-------|---------|
| ID | INBD TR | INBD MAG | Turn Direction | MAX IAS | MNM HLDG LVL | TIME | DIST NM |
| DIVAM | 067.4°T | 058° | Right | 230 KT | F100 | 1 MIN | - |
| INTOR | 023.1°T | 014° | Right | 230 KT | F120 | 1 MIN | - |
| LAKUT | 077.9°T | 069° | Left | 230 KT | F100 | 1 MIN | - |
| LUSEP | 181.3°T | 172° | Left | 230 KT | F100 | 1 MIN | - |
| ROPAM | 302.0°T | 293° | Right | 230 KT | A3000 | 1 MIN | - |
| VEPIN | 236.1°T | 227° | Left | 230 KT | F100 | 1 MIN | - |

| WPT COORD |
|---------------------------|
| SEE PAGE EFHK AD 2.15 - 1 |