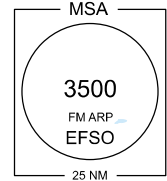


RADIO DATA

Sodankylän liikenne	123.400
Sodankylä traffic	
ACC	126.100



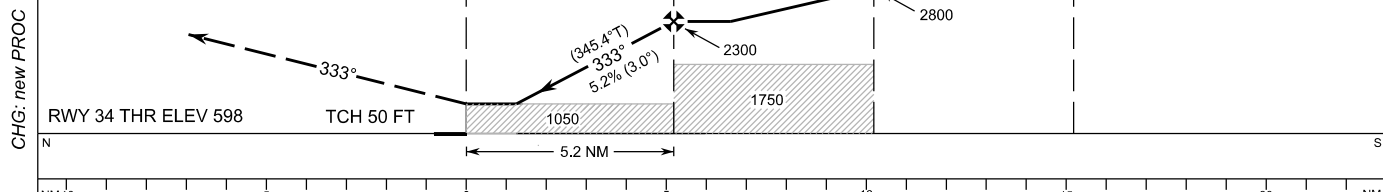
ACFT CAT
A, B and C only

PBN
RNP APCH

NOTE
Uncontrolled aerodrome

MISSED APPROACH
Proceed FM RW34 to RUHOT
then right turn to AKKIT
climbing to 3500

TA 5000



OCA (H)	A	B	C
LNAV	1050 (460)		
MNM DH 500 FT			
Circling	1200 (600)	1330 (730)	1540 (940)

DIST FM THR	2.0 NM	3.0 NM	4.0 NM			
Altitude (Height)	1280 (690)	1600 (1010)	1920 (1320)			
	kt	90	100	120	130	140
FAF - MAPt 5.2 NM	min:sec	3:28	3:07	2:36	2:24	2:13
Rate of descent	ft/min	480	530	640	690	750

Timing not authorized for defining the MAPt

EFSO RNP RWY 34										
PROC ID NAV SPEC	SEQ NR	P/T	WPT			MAG GEO TR	DIST NM	Turn direction	Constraints	
			ID	Type	Flyover				LVL	Speed
H34 TUHAR RNP APCH	005	IF	TUHAR	IAF	-	063° 075.4°T	5.0	LEFT	A3500+	K230-
	010	TF	SOHAK	IF	-				333° 345.4°T	5.0
	020	TF	UVNUN	FAF	-	333° 345.4°T	5.2		A2300+	
	030	TF	RW34	MAPt	Y				333° 345.2°T	11.4
	040	TF	RUHOT	MATF	-	063° 075.4°T	5.0	RIGHT		
	050	TF	AKKIT	MAHF	Y				A3500	

EFSO RNP RWY 34										
PROC ID NAV SPEC	SEQ NR	P/T	WPT			MAG GEO TR	DIST NM	Turn direction	Constraints	
			ID	Type	Flyover				LVL	Speed
H34 UDSOL RNP APCH	005	IF	UDSOL	IAF	-	243° 255.4°T	5.0	RIGHT	A3500+	K230-
	010	TF	SOHAK	IF	-				333° 345.4°T	5.0
	020	TF	UVNUN	FAF	-	333° 345.4°T	5.2		A2300+	
	030	TF	RW34	MAPt	Y				333° 345.2°T	11.4
	040	TF	RUHOT	MATF	-	063° 075.4°T	5.0	RIGHT		
	050	TF	AKKIT	MAHF	Y				A3500	

RNAV Holdings							
ID	INBD TR	INBD MAG	Turn direction	MAX IAS	MNM HLDG LVL	TIME	DIST NM
AKKIT	255.4°T	243°	RIGHT	K230-	A3500	1 MIN	-
UDSOL	255.6°T	243°	LEFT	K230-	A3500	1 MIN	-

WPT COORD	
ID	COORD
TUHAR	671213.61N 0263136.34E
SOHAK	671329.22N 0264402.30E
UVNUN	671818.50N 0264047.80E
RW34	672318.69N 0263724.79E
RUHOT	673417.66N 0262953.95E
AKKIT	673533.29N 0264231.47E
UDSOL	671443.85N 0265629.56E

FINAL APPROACH PARAMETERS			
LNAV Gradient	Baro-VNAV		TCH
	VPA	MNM T	
5.24 % (3.00°)	NIL		50 FT