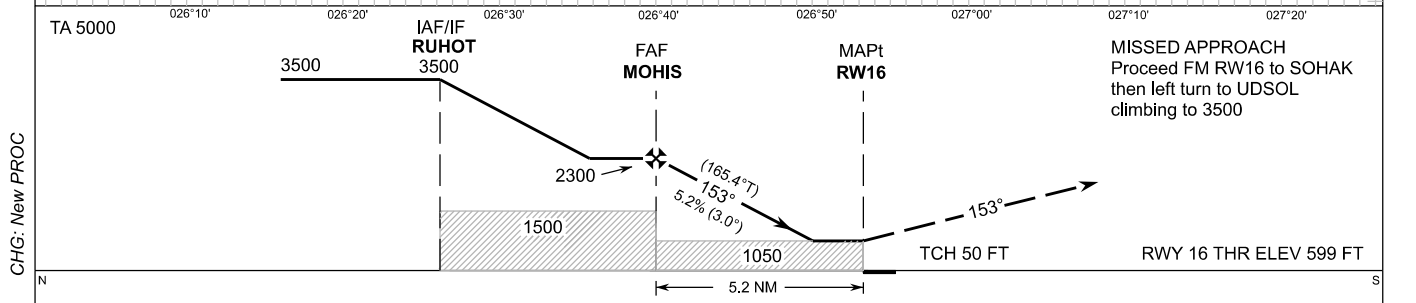
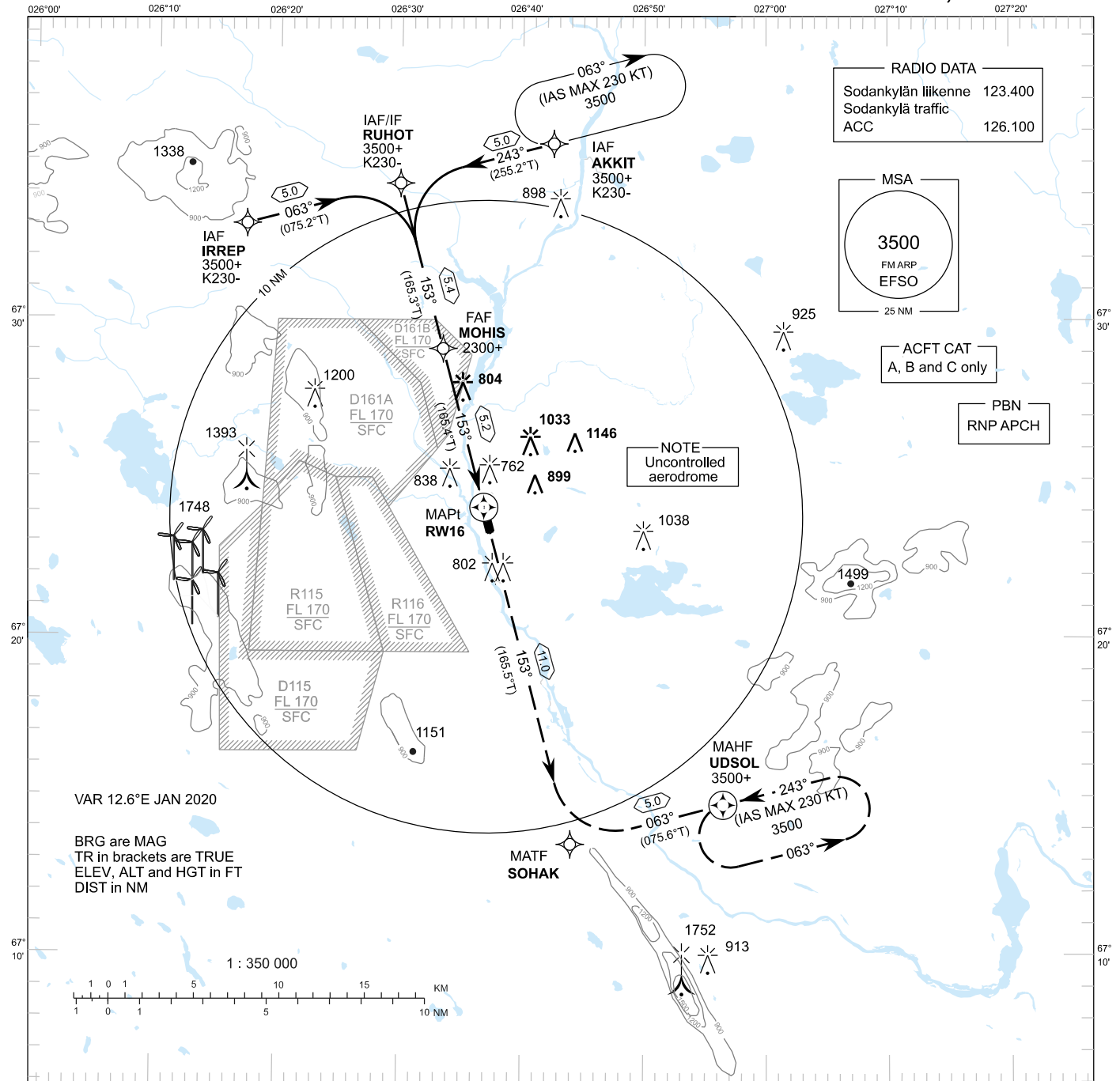


INSTRUMENT
APPROACH CHART - ICAO

ELEV 602 FT
HEIGHTS RELATED TO
THR RWY 16 ELEV 599 FT

RNP RWY 16
SODANKYLÄ AERODROME
SODANKYLÄ, FINLAND



OCA (H)	A	B	C
LNAV	1050 (460)		
MNM DH 500 FT			
Circling	1200 (600)	1330 (730)	1540 (940)

DIST FM THR	2.0 NM	3.0 NM	4.0 NM			
Altitude (Height)	1290 (690)	1600 (1010)	1920 (1320)			
	kt	90	100	120	130	140
FAF - MAPt 5.2 NM	min:sec	3:27	3:07	2:36	2:24	2:13
Rate of descent	ft/min	480	530	640	690	750

Timing not authorized for defining the MAPt

EFSO RNP RWY 16										
PROC ID NAV SPEC	SEQ NR	P/T	WPT			MAG GEO TR	DIST NM	Turn direction	Constraints	
			ID	Type	Flyover				LVL	Speed
H16 IRREP RNP APCH	005	IF	IRREP	IAF	-	063° 075.2°T	5.0	RIGHT	A3500+	K230-
	010	TF	RUHOT	IF	-				153° 165.3°T	5.4
	020	TF	MOHIS	FAF	-	153° 165.4°T	5.2		A2300+	
	030	TF	RW16	MAPt	Y				153° 165.5°T	11.0
	040	TF	SOHAK	MATF	-	063° 075.6°T	5.0	LEFT		
	050	TF	UDSOL	MAHF	Y				A3500	

EFSO RNP RWY 16										
PROC ID NAV SPEC	SEQ NR	P/T	WPT			MAG GEO TR	DIST NM	Turn direction	Constraints	
			ID	Type	Flyover				LVL	Speed
H16 RUHOT RNP APCH	010	IF	RUHOT	IAF/IF	-	153° 165.3°T	5.4		A3500+	K230-
	020	TF	MOHIS	FAF	-				153° 165.4°T	5.2
	030	TF	RW16	MAPt	Y	153° 165.5°T	11.0	LEFT		
	040	TF	SOHAK	MATF	-				063° 075.6° T	5.0
	050	TF	UDSOL	MAHF	Y			A3500		

EFSO RNP RWY 16										
PROC ID NAV SPEC	SEQ NR	P/T	WPT			MAG GEO TR	DIST NM	Turn direction	Constraints	
			ID	Type	Flyover				LVL	Speed
H16 AKKIT RNP APCH	005	IF	AKKIT	IAF	-	243° 255.2°T	5.0	LEFT	A3500+	K230-
	010	TF	RUHOT	IF	-				153° 165.3°T	5.4
	020	TF	MOHIS	FAF	-	153° 165.4°T	5.2		A2300+	
	030	TF	RW16	MAPt	Y				153° 165.5°T	11.0
	040	TF	SOHAK	MATF	-	063° 075.6°T	5.0	LEFT		
	050	TF	UDSOL	MAHF	Y				A3500	

RNAV Holdings							
ID	INBD TR	INBD MAG	Turn direction	MAX IAS	MNM HLDG LVL	TIME	DIST NM
AKKIT	255.4°T	243°	RIGHT	K230-	A3500	1 MIN	-
UDSOL	255.6°T	243°	LEFT	K230-	A3500	1 MIN	-

WPT COORD	
ID	COORD
IRREP	673301.04N 0261717.79E
RUHOT	673417.66N 0262953.95E
MOHIS	672905.45N 0263328.45E
RW16	672405.55N 0263652.97E
SOHAK	671329.22N 0264402.30E
UDSOL	671443.85N 0265629.56E
AKKIT	673533.29N 0264231.47E

FINAL APPROACH PARAMETERS			
LNAV Gradient	Baro-VNAV		TCH
	VPA	MNM T	
5.24 % (3.00°)	NIL		50 FT